




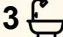
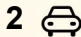
200 Marsden Road, Dundas Valley

840sqm Block with 20m Frontage

We are proud to offer to the market is this 4 bedroom weatherboard home set on a large 840sqm block of land with an amazing view of Parramatta CBD. Conveniently located with easy access to Eastwood shops, restaurants and train station. This is an ideal property for a family home or a great investment opportunity. Potential development duplex site (subject to council approval). Features include:

- 4 bedrooms, main with en-suite
- Totalling of 3 bathrooms
- Kitchen with combine dining
- Amazing view through living area with fire place
- Internal laundry plus toilet
- Side drive way to ample off street parking
- Huge yard great for entertainment or development
- Close to shops, schools and public transport
- Storm water easement available

Don't miss out on this great opportunity to secure this great property. Genuine sale. Will be sold before auction or at auction.

4  3  2 

FOR SALE
\$1,680,000

AGENTS

Soon Tee
0420 966 377
Soon.Tee@ljhooker.com.au

AGENCY

LJ Hooker Parramatta | Granville |
Guildford | Merrylands
(02) 9637 8555

All information contained therein is gathered from relevant third parties sources.
We cannot guarantee or give any warranty about the information provided.
Interested parties must rely solely on their own enquiries.

 **LJ Hooker**

MORE DETAILS

Property ID 2EU1F9E
Property Type House
Land Area 840 m2

Soon Tee 0420 966 377

Area Specialist | Soon.Tee@ljhooker.com.au

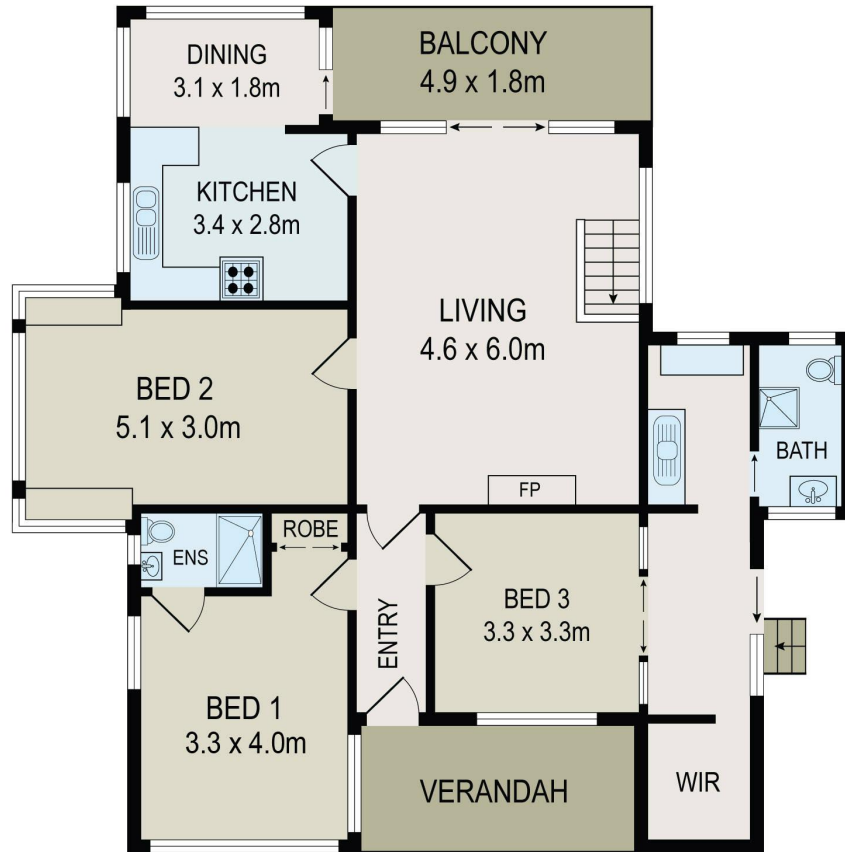
**LJ Hooker Parramatta | Granville | Guildford | Merrylands (02)
9637 8555**

42 South Street, GRANVILLE NSW 2142

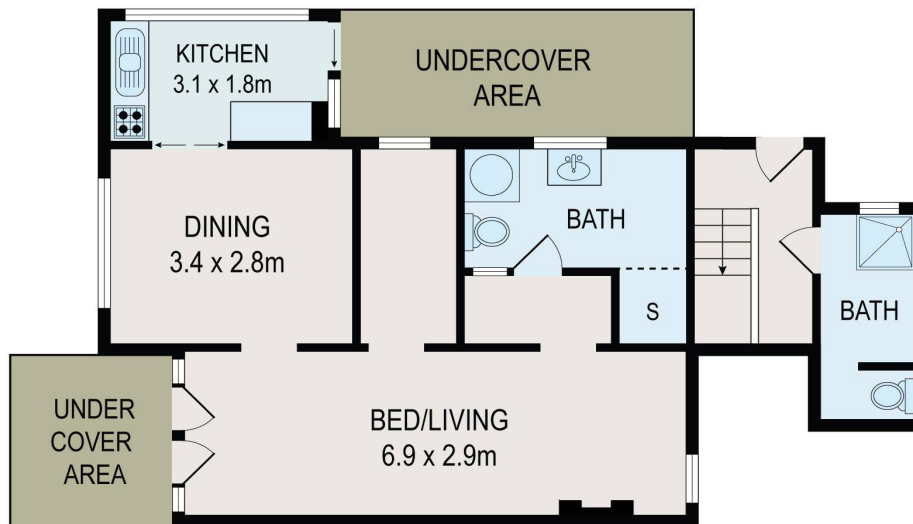
granville.ljhooker.com.au | granville@ljhooker.com.au



All information contained therein is gathered from relevant third parties sources.
We cannot guarantee or give any warranty about the information provided.
Interested parties must rely solely on their own enquiries.



ENTRY LEVEL



LOWER LEVEL



All information contained herein is gathered from all sources we believe to be reliable. However we cannot guarantee its accuracy and interested parties should rely on their own enquiries.



200 Marsden Road, Dundas Valley

All information contained therein is gathered from relevant third parties sources. We cannot guarantee or give any warranty about the information provided. Interested parties must rely solely on their own enquiries.

