



1/3 Springwater Drive, Drouin

2 🏠 1 🚿 1 🚗

## Immaculate Unit! Not a Thing to do!

Located in a quiet off street location only a short drive from Drouin central business district is this well-presented unit that's sure to suit those looking to make a savvy purchase.

### Offering:

- Master bedroom with built in robe
- Second bedroom with built in robe
- Semi - ensuite with separate toilet
- Good sized living zone
- Dining area
- Kitchen area with stone benchtop and features stainless steel appliances - oven, cooktop, rangehood and dishwasher
- Ducted heating
- Split - system air conditioner
- Internal laundry
- Internal access from the single car garage on remote

A low maintenance yard area as well as undercover alfresco!

Whether you are looking to purchase your first home, downsize or looking to invest, this is an opportunity not to be missed!

### FOR SALE

Please Call

### AGENTS

Cale Popovits

0417 037 299

[cpopovits.pakenham@ljhooker.com.au](mailto:cpopovits.pakenham@ljhooker.com.au)

### AGENCY

LJ Hooker Pakenham

(03) 5943 8000

All information contained therein is gathered from relevant third parties sources. We cannot guarantee or give any warranty about the information provided. Interested parties must rely solely on their own enquiries.



## MORE DETAILS

Property ID 1PYXFC9  
Property Type Unit  
Including Air Conditioning  
Ducted Heating  
Dishwasher  
Outdoor Entertaining  
Built-in-Robes  
Secure Parking  
Fully Fenced  
Remote Garage

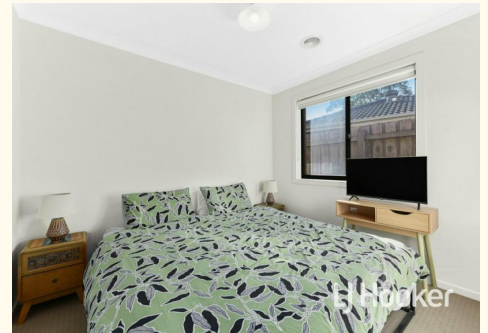
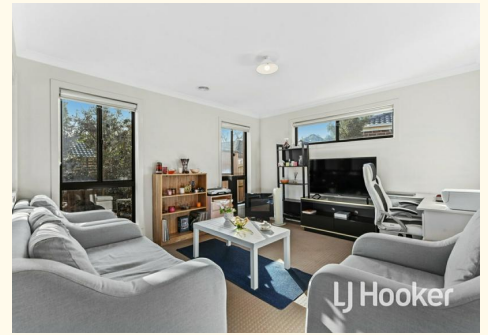
**Cale Popovits 0417 037 299**

Sales Specialist | [cpopovits.pakenham@ljhooker.com.au](mailto:cpopovits.pakenham@ljhooker.com.au)

**LJ Hooker Pakenham (03) 5943 8000**

45 John Street, PAKENHAM VIC 3810

[pakenham.ljhooker.com.au](http://pakenham.ljhooker.com.au) | [pakenham@ljhooker.com.au](mailto:pakenham@ljhooker.com.au)



All information contained therein is gathered from relevant third parties sources.  
We cannot guarantee or give any warranty about the information provided.  
Interested parties must rely solely on their own enquiries.



This drawing is for illustrative purposes only and while every effort has been made to maintain accuracy, prospective purchasers should check all information