



14 Legge Street, Downer

## Move In Today, Extend Tomorrow

Tucked behind a private hedge on leafy Legge Street, this solid red brick home is ready for its next chapter.

Right now, the home offers a practical and comfortable layout including three bedrooms, a bathroom with bathtub and separate toilet, and a large laundry with external access. The generous living area welcomes you in with sun-filled picture windows overlooking the front garden, while the updated kitchen flows effortlessly into the dining space, perfect for family meals and easy entertaining. Year-round comfort is assured with reverse-cycle air conditioning, and outside, you'll appreciate the lock-up garage and rear storage shed for all your tools and toys.

But here's where the story gets exciting.

Step outside and discover a large, flat rectangular block, your blank canvas. Imagine creating a light-filled open-plan living area, adding a stunning alfresco space for summer gatherings, or designing the master suite you've always dreamed of. The possibilities are endless, and it all starts here.

3  1  1 

### FOR SALE

Auction 11/02/2026

### AGENTS

Stephen Bunday  
0416 014 431  
[stephen.bunday@ljhdickson.com.au](mailto:stephen.bunday@ljhdickson.com.au)

Goran Stefanoski  
0447 032 017  
[goran.stefanoski@ljhdickson.com.au](mailto:goran.stefanoski@ljhdickson.com.au)

### AGENCY

LJ Hooker Dickson  
(02) 6257 2111

All information contained therein is gathered from relevant third parties sources. We cannot guarantee or give any warranty about the information provided. Interested parties must rely solely on their own enquiries.

 **LJ Hooker**

But why Downer?

Downer is quickly becoming one of Canberra's most loved suburbs, known for its family-friendly streets and strong community spirit, where Christmas Street parties are a tradition and neighbours become friends. The vibrant Downer Shops are just a short stroll away, with Gang Gang Café ready to become your go-to for morning coffee, lazy lunches, and live music nights.

Convenience continues with Dickson Town Centre only moments away, offering major supermarkets, specialty retailers, light rail access, and Canberra's popular Chinatown dining precinct. Nearby parks, playing fields, walking tracks, and the Dickson Pool round out a location that's practical, connected, and ideal for everyday living.

Move in today. Extend tomorrow. Create the lifestyle you've always wanted in a location you'll never want to leave.

At a glance:

- Solid red brick home
- Tucked behind a private hedge on leafy Legge Street
- Flat, rectangular block with generous rear yard
- Large living area flooded with natural light
- Updated kitchen connects to dining area
- Reverse-cycle air-conditioning (living area and main bedroom)
- Generous laundry with rear access
- Iconic Hills Hoist clothesline
- Lock up garage plus storage shed
- In the catchment for Lyneham Primary School, Majura Primary School, Lyneham High School and Dickson College
- Short walk to the Downer Shops and the Downer Playing Fields
- Within a 10-minute walk to the Dickson Town Centre
- Close proximity to walking trails, parks and the Dickson Pool

## MORE DETAILS

Property ID	1HKN0MF92
Property Type	House
House Size	94 m2
Land Area	735 m2
EER	1

**Stephen Bunday 0416 014 431**

Licensed Agent & Auctioneer ACT/NSW |  
stephen.bunday@ljhdickson.com.au

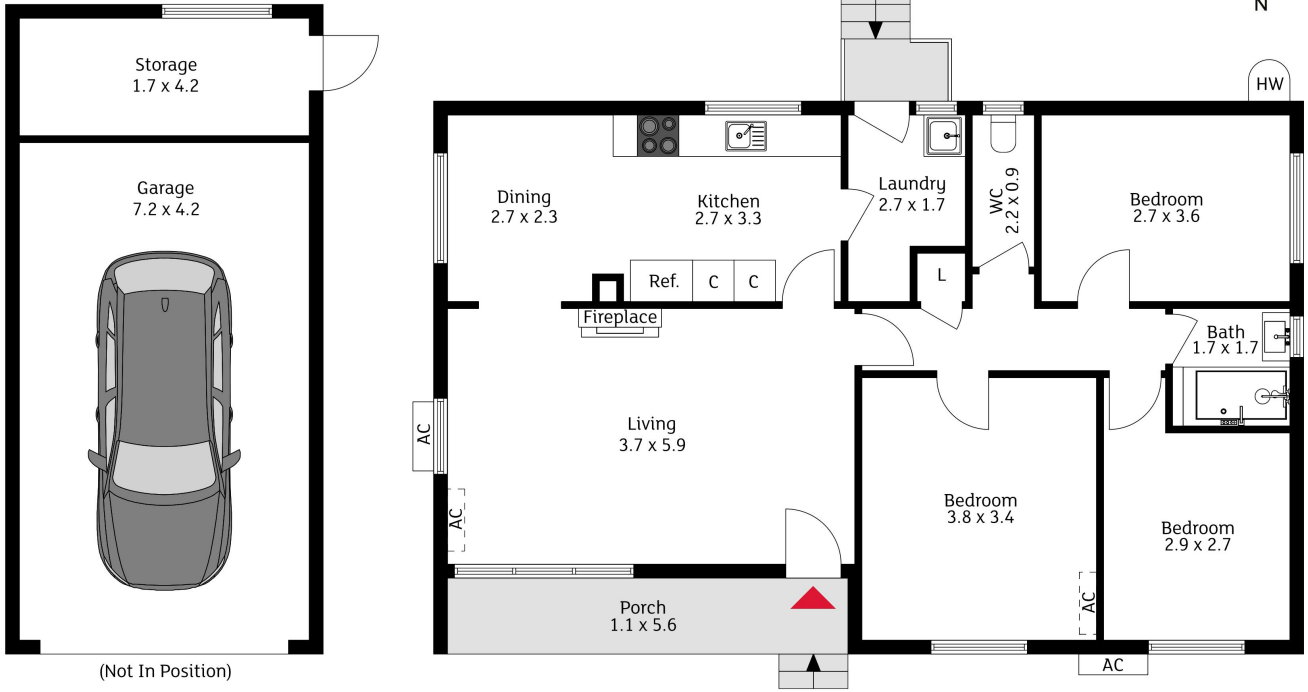
**Goran Stefanoski 0447 032 017**

Registered Agent ACT & NSW | goran.stefanoski@ljhdickson.com.au

**LJ Hooker Dickson (02) 6257 2111**

36 Woolley Street, DICKSON ACT 2602  
dickson.ljhooker.com.au | info@ljhdickson.com.au





The floor plan is not to scale; measurements are indicative and in metres. Exterior elements are not in position. Plans should not be relied on. Interested parties should make and rely on their own enquiries.

14 Legge Street, Downer



All information contained therein is gathered from relevant third parties sources.  
We cannot guarantee or give any warranty about the information provided.  
Interested parties must rely solely on their own enquiries.

