

Doreen, 98 Wallaroo Way

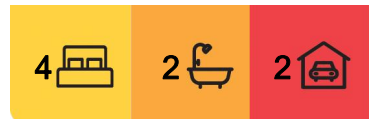
Elegantly Designed Retreat, Perfect for Family Comfort!

Vendor must sell! ! !

This single-level home boasts stylish and spacious interiors flooded with natural light, offering a low-maintenance lifestyle and exceptional living comfort. Vacant from September 4th and with an expected weekly rental income of \$580-\$620. It is perfectly suited for both investors and owner-occupiers looking to move in immediately.

This adaptable dual living residence offers everyone a formal lounge area and an open plan living and dining zone. The gourmet kitchen stands out with its stone bench tops, high-quality appliances, including a 900mm stainless steel cooker, and a generously sized walk-in pantry.

Anchoring the expansive open plan living area, it becomes the heart of the home. With ample space for family relaxation or lavish gatherings, this space seamlessly flows to a



For Sale
\$695,000-\$730,000

View
ljhooker.com.au/M6EHC2

Contact
Yannie Hou
0416 868 512
yhou.rowville@ljhooker.com.au



LJ Hooker City Residential
(03) 9600 2166

Disclaimer: All information contained therein is gathered from relevant third parties sources. We cannot guarantee or give any warranty about the information provided. Interested parties must rely solely on their own enquiries.

combination of covered and open alfresco areas. Here, you can enjoy meals while the kids and pets play on the no-mow turf —offering all the joys of a grassy yard without the need for constant upkeep.

A remarkable master bedroom featuring a walk-in robe and ensuite, accompanied by three other generously proportioned bedrooms with built-in robes. The residence also encompasses a contemporary central bathroom with a separate toilet, a laundry, and an outdoor area.

Situated just moments away from Laurimar Town Centre, shops, cafes, schools, parkland, and transportation choices, this contemporary and luxurious family residence embodies a seamless blend of architectural excellence and top-tier craftsmanship. It presents an unmatched living opportunity for those in pursuit of the ultimate in sophisticated living.

Enhanced with ducted heating and cooling, a harmonious blend of plush carpeting and elegant tiles, large double remote garage with decent size laundry. This single-level haven caters to all age groups, various life stages, and even astute investors. The appeal is undeniable, making prompt action a must. Don't delay —seize this golden opportunity swiftly!

PHOTO ID REQUIRED AT OPEN FOR INSPECTIONS

More About this Property

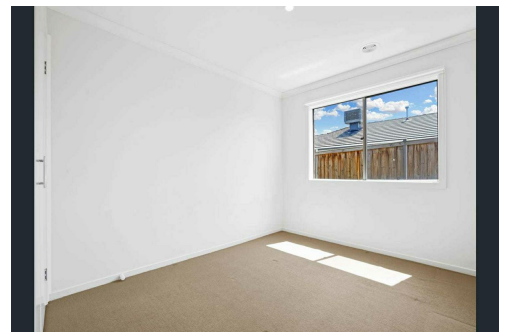
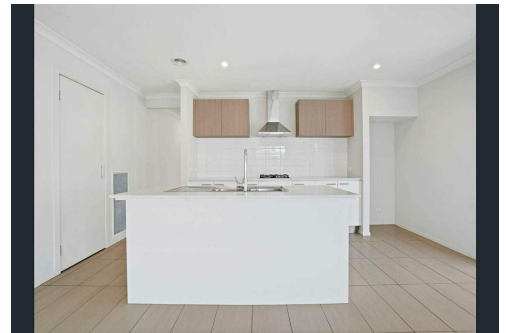
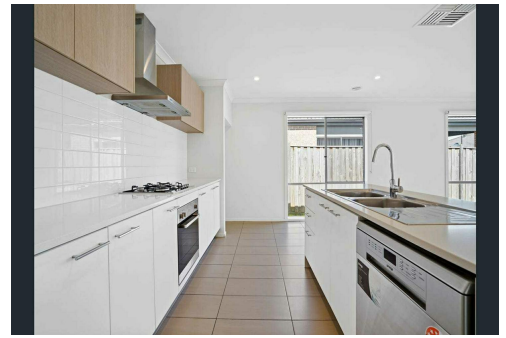
Property ID	M6EHC2
Property Type	House
Land Area	448 m ²

Yannie Hou 0416 868 512

Senior Property Consultant | yhou.rowville@ljhooker.com.au

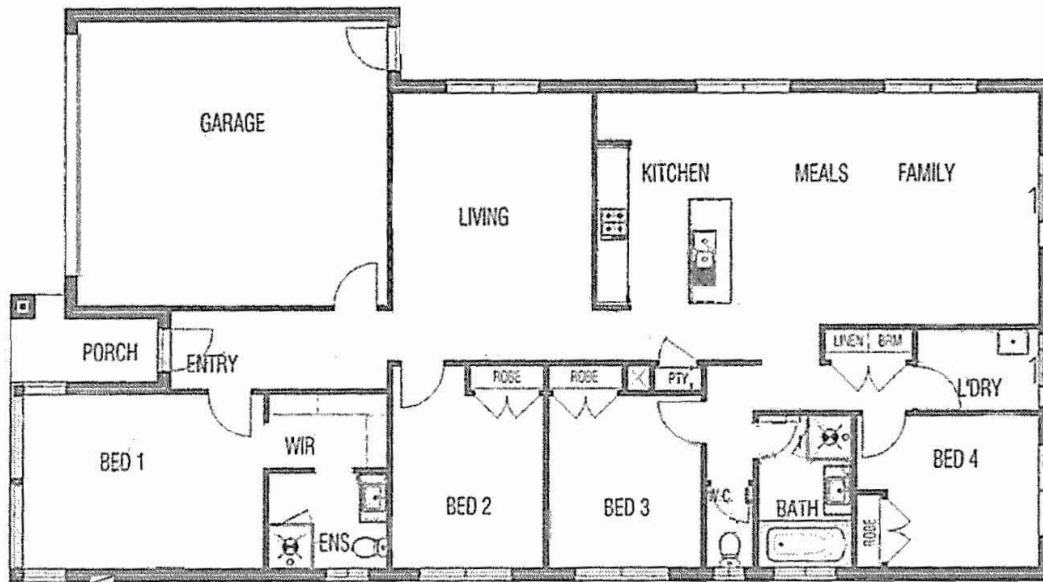
LJ Hooker City Residential (03) 9600 2166

Upper Ground Floor, 439-445 Lonsdale St, MELBOURNE VIC 3000
cityresmelbourne.ljhooker.com.au | cityresmelbourne@ljhooker.com.au



LJ Hooker City Residential
(03) 9600 2166

Disclaimer: All information contained therein is gathered from relevant third parties sources. We cannot guarantee or give any warranty about the information provided. Interested parties must rely solely on their own enquiries.



98 WALLAROO WAY DOREEN VIC 3754