



## Doncaster, 2 Oak Place

### Family Luxury on a Spacious Block In Prestigious Tullamore Estate

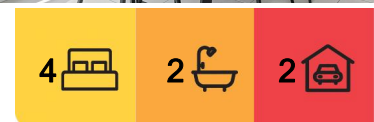
Positioned on a generous individually titled 388m<sup>2</sup> block of prestigious Tullamore Estate, this contemporary double-storey, four-bedroom home delivers the perfect blend of modern elegance and family-friendly living. With an attractive, low-maintenance facade and garden, this well-appointed residence boasts multiple living zones, providing ample space for relaxation and entertainment.

Upstairs, you'll find the private retreat of four spacious bedrooms, all carpeted for added comfort. The master suite is your personal sanctuary, featuring a luxurious ensuite with a double vanity and a walk-in robe. The additional bedrooms all include built-in robes and share a stylish family bathroom with a separate powder room.

Step outside into a secluded rear garden-perfect for outdoor dining, kids' playtime, or simply unwinding in your own private oasis.



**Disclaimer:** All information contained therein is gathered from relevant third parties sources. We cannot guarantee or give any warranty about the information provided. Interested parties must rely solely on their own enquiries.



#### For Sale

Vendor Says Sell: \$1,400,000 - \$1,450,000

#### View

Thu 31st Jul @ 5:00PM - 5:30PM

#### Contact

**Kobe Li**

0434 566 941

kli.rowville@ljhooker.com.au

**Jerome Yie-ong**

0468 777 716

jyang.rowville@ljhooker.com.au

**LJ Hooker Rowville**  
(03) 9132 5118

#### Key Features:

4 generously-sized bedrooms with BIRs; master with WIR and ensuite  
Multiple living areas offering versatility for family living and entertaining  
2 sleek, modern bathrooms  
Gourmet kitchen with premium appliances, large oven, and dishwasher  
Ducted heating and split system air conditioning for year-round comfort  
Remote-access double garage with secure entry  
State-of-the-art security alarm system  
Expansive 388m<sup>2</sup> of private, titled land  
Prime Location for a Connected Lifestyle

Enjoy the convenience of being just minutes from the Eastern Freeway, Doncaster Park & Ride, and a range of public transport options. Westfield Doncaster, Macedon Square, and Bulleen Village are all nearby for easy access to shopping, dining, and entertainment. Families will love the proximity to Templestowe College, Templestowe Heights Primary School, and the area's beautiful parks, including Ruffey Lake Park and the scenic Yarra River walking trails.

Whether you're looking for space, style, or a sense of community, this home delivers it all.

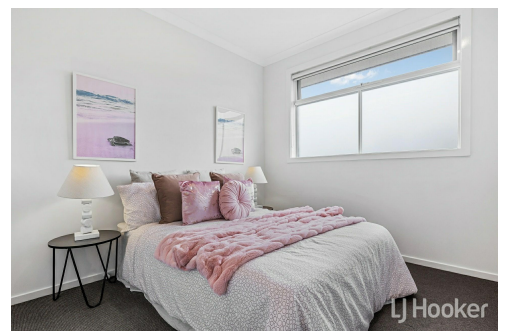
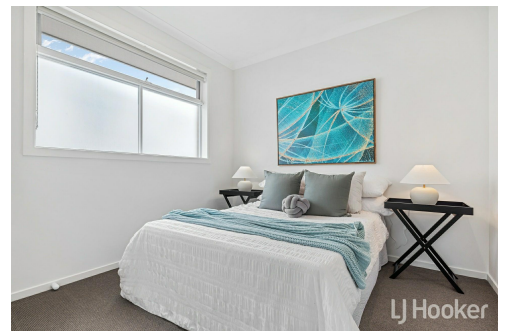
Don't miss this opportunity-Contact Kobe today on 0434566941 for more information!

## More About this Property

<b>Property ID</b>	2GCHWN
<b>Property Type</b>	House
<b>Land Area</b>	388 m2
<b>Including</b>	Ensuite Air Conditioning Alarm Built-in-Robes Area Views Carpeted Close to Schools Close to Shops Close to Transport Creative Heating

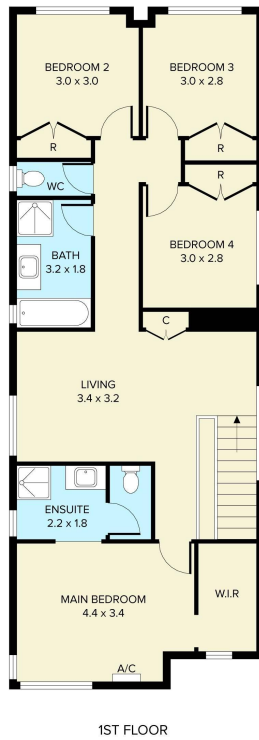
**Kobe Li 0434 566 941**  
Managing Director, OIEC | [kli.rowville@ljhooker.com.au](mailto:kli.rowville@ljhooker.com.au)  
**Jerome Yie-ong 0468 777 716**  
Sales Manager | [jyang.rowville@ljhooker.com.au](mailto:jyang.rowville@ljhooker.com.au)

**LJ Hooker Rowville (03) 9132 5118**  
Unit 11-12/ 7 Fulham Road, ROWVILLE VIC 3178  
[rowville.ljhooker.com.au](http://rowville.ljhooker.com.au) | [rowville@ljhooker.com.au](mailto:rowville@ljhooker.com.au)

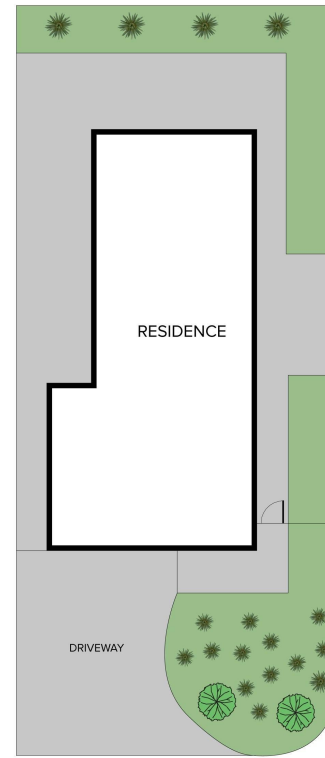
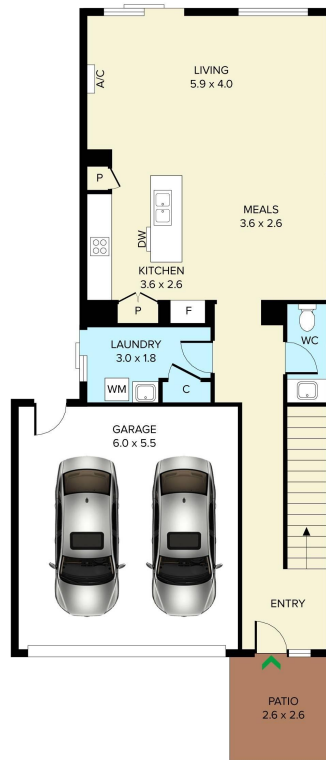


**Disclaimer:** All information contained therein is gathered from relevant third parties sources.  
We cannot guarantee or give any warranty about the information provided. Interested parties must rely solely on their own enquiries.

**LJ Hooker Rowville**  
**(03) 9132 5118**



Internal Area: 233.79m<sup>2</sup>



THIS PLAN IS NOT TO SCALE. MEASUREMENTS ARE INDICATIVE AND IN METRES. SITE PLAN REFLECTS APPROXIMATE POSITION OF BUILDINGS ON PROPERTY ONLY AND IS NOT AN ACCURATE REPRESENTATION OF VEGETATION AND OTHER EXTERNAL LANDSCAPE FEATURES. THIS PLAN SHOULD NOT BE RELIED UPON AND INTERESTED PARTIES SHOULD MAKE THEIR OWN ENQUIRIES.

floorpik by scandipik