



1101/81 South Wharf Drive, Docklands

Luxury Mirvac Apartment with Stunning River & City Views

- Positioned in the prestigious Forge building at Yarra's Edge, this beautifully designed two-bedroom, two-bathroom apartment offers breathtaking views across the CBD skyline, Yarra River, Victoria Harbour and NewQuay. Built by renowned developer Mirvac, the residence combines quality finishes, abundant natural light and seamless indoor-outdoor living in one of Docklands' most desirable waterfront locations.
- The open-plan living and dining area flows to a covered balcony perfect for entertaining, while the designer stone kitchen features an island bench, premium Smeg appliances and an integrated fridge. The spacious master bedroom enjoys a private ensuite and spectacular river and city views, while the second bedroom features curved windows and mirrored built-in robes.
- Additional features include two stylish fully tiled bathrooms, a European laundry with storage, ducted heating and cooling, secure video intercom entry and two secure basement car spaces.
- Residents enjoy exclusive access to the Wharf Club, offering a fully equipped gym, indoor pool and spa, private dining facilities and a boutique cinema, along with professional on-site building management.

Ideally located within the peaceful Wharf's Entrance precinct, the

2 2 2

FOR SALE

Make an appointment \$880,000 - \$900,000

VIEW

By Appointment

AGENTS

Yuanyuan Chen
0415 831 789
yuanyuan.cityresmelbourne@ljhooker.com.au

AGENCY

LJ Hooker City Residential
(03) 9600 2166

All information contained therein is gathered from relevant third parties sources.
We cannot guarantee or give any warranty about the information provided.
Interested parties must rely solely on their own enquiries.

LJ Hooker

home is moments from the Yarra River promenade, South Wharf dining, DFO shopping, public transport, parklands and CityLink access.

Disclaimer: We have in preparing this document used our best endeavours to ensure that the information contained in this document is true and accurate, but accept no responsibility and disclaim all liability in respect to any errors, omissions, inaccuracies or misstatements in this document. The fixtures, fittings, appliances and services have not been tested and no guarantee as to their functionality or efficiency can be provided. Distances and timings are approximate. Prospect purchasers should independently verify the information contained in this document and refer to the due diligence check-list provided by consumer affairs. Click on the link for a copy of the due diligence check-list:

<http://www.consumer.vic.gov.au/duediligencechecklist>

MORE DETAILS

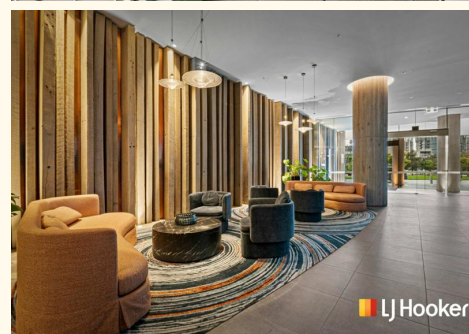
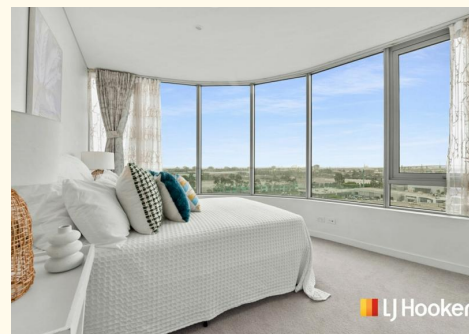
| | |
|---------------|--------------------|
| Property ID | PGEHC2 |
| Property Type | Apartment |
| House Size | 114 m2 |
| Including | Air Conditioning |
| | Close to Schools |
| | Close to Shops |
| | Close to Transport |

Yuanyuan Chen 0415 831 789

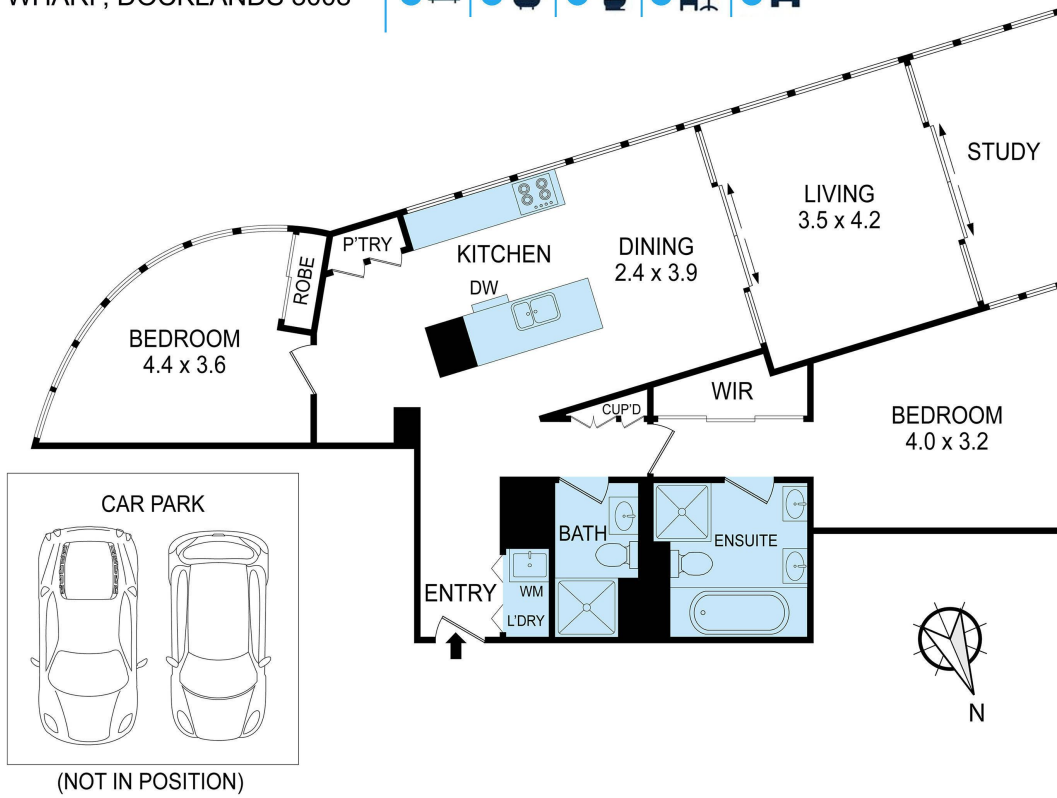
Senior Sales Consultant |
yuanyuan.cityresmelbourne@ljhooker.com.au

LJ Hooker City Residential (03) 9600 2166

Upper Ground Floor, 439-445 Lonsdale St, MELBOURNE VIC 3000
cityresmelbourne.ljhooker.com.au |
cityresmelbourne@ljhooker.com.au



1101/82 S WHARF, DOCKLANDS 3008



DISCLAIMER

Whilst every attempt has been made to ensure the accuracy of the floor plan contained here, measurements of doors, windows, rooms and other items here are approximate and no responsibility is taken for any error, omission or misstatement. This is for illustrative purpose only and should be used as such by any prospective purchaser.



All information contained therein is gathered from relevant third parties sources.
We cannot guarantee or give any warranty about the information provided.
Interested parties must rely solely on their own enquiries.

