



Heather, 16 Challis Street, Dickson

Single Level Apartment With Huge 50sqm Terrace!

About Heather

Inspired by Heather Henderson —the daughter of Dame Pattie Menzies, whose name once adorned the building on which this new project rests. This project is inspired by a pioneering woman, whose influence and sensitivity helped shaped Canberra into our great capital city.

Heather is a curated collection of 148 timeless one-, two- and three-bedroom apartments which pay homage to Dickson's past whilst inviting the next generation to help shape its future.

Location

Dickson is one of Canberra's most established suburbs. Its central location, abundance of nature reserves, parks and arguably Canberra's best (and most historic) public pool meet the needs of anyone seeking an outdoor lifestyle in an urban setting. For those seeking culture and grit, the heart of Dickson is unrivalled, with the opportunity to indulge in fabulous food and flavours from around the world.

. 40m to Dickson Interchange

2 🏠 2 🚗 1 🚗

FOR SALE

\$739,900+

VIEW

By Appointment

AGENTS

David Shi
0417 668 668
david.shi@ljhooker.com.au

AGENCY

LJ Hooker Projects ACT
(02) 6249 7700

All information contained therein is gathered from relevant third parties sources.
We cannot guarantee or give any warranty about the information provided.
Interested parties must rely solely on their own enquiries.



- . 500m to Woolworths and future Coles
- . 150m to Anytime Fitness
- . 700m to Dickson Aquatic Centre
- . 500m to Dickson Library
- . 8 minutes to Civic City Centre / Lonsdale Street / ANU

Features

- . Double glazed windows for high energy efficiency
- . High quality Bosch appliances
- . Luxury vinyl flooring
- . Reverse cycle heating and cooling
- . Cross ventilation
- . Stone benchtops
- . Wall hung vanities
- . Full height bathroom tiling
- . Multiple landscaped gardens
- . Incredible location in the heart of Dickson
- . Designed by COX Architecture

MORE DETAILS

Property ID	1VKJGR5
Property Type	Apartment
EER	6

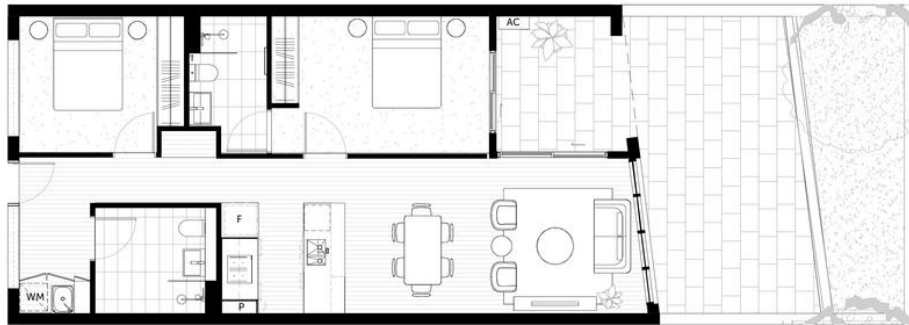
David Shi 0417 668 668

Development Manager | david.shi@ljhooker.com.au

LJ Hooker Projects ACT (02) 6249 7700

1st Floor, 182 - 200 City Walk, CANBERRA CITY ACT 2601
projectsact@ljhooker.com.au | projectsact@ljhooker.com.au





Heather



LJ Hooker
Property Marketing ACT

C O X

The floor plan layout may be subject to minor amendments and dimensional changes to suit final working drawings and grid layouts which are subject to the Building Code of Australia. Dimensions shown are to structural levels. The area of each unit is calculated using ACTPLA guidelines. It is the buyer's responsibility to refer to their contract of sale to verify that any information provided in relation to the property is correct and accurate. The furniture layout and sizes portrayed in the floor plan are indicative only and should not be relied upon by the buyer. Landscaping is indicative only, refer to landscape plan and inclusions in your contract of sale for final finishes. NBN EES 6.

All information contained therein is gathered from relevant third parties sources.
We cannot guarantee or give any warranty about the information provided.
Interested parties must rely solely on their own enquiries.

LJ Hooker