



1/46 Shores Crescent, Diamond Beach

Brand New 4 Bedroom Townhouse in Prime Diamond Beach Location

Enjoy easy coastal living in this brand-new, low-maintenance townhouse and just moments from the beautiful sands of Diamond Beach.

Features:


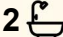

- Brand new four bedroom, two bathroom brick townhouse;
- Single garage with internal access;
- Short stroll to Diamond Beach;
- Open-plan living and dining area;
- Reverse-cycle air conditioning in the living area;
- Main bedroom with ensuite and reverse-cycle air conditioning;
- Three toilets for added convenience.

Townhouse 2 is also available for purchase, offering a fantastic opportunity for investors, extended families, or those looking to secure two quality properties in a great coastal location.

Contact Luke Crane on 0419 279 776 for a private inspection.

Disclaimer: All information contained herein is gathered from relevant

All information contained therein is gathered from relevant third parties sources. We cannot guarantee or give any warranty about the information provided. Interested parties must rely solely on their own enquiries.

4  2  1 

FOR SALE
\$849,000

AGENTS

Luke Crane
0419 279 776
luke.crane@ljhft.com.au

AGENCY

LJ Hooker Forster | Tuncurry
(02) 6591 6400



third party sources. We cannot guarantee or give any warranty about the information provided. Interested parties must rely solely on their own enquiries.

MORE DETAILS

Property ID	1EUZF5Y
Property Type	Townhouse
Including	Ensuite
	Air Conditioning
	Toilets (3)

Luke Crane 0419 279 776

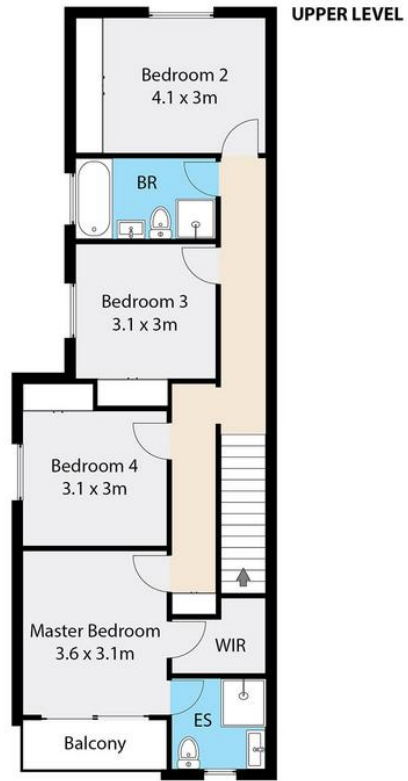
Licensed Real Estate Agent | luke.crane@ljhft.com.au

LJ Hooker Forster | Tuncurry (02) 6591 6400

3/41 Kularoo Drive, FORSTER NSW 2428
forster.ljhooker.com.au | realestate@ljhforster.com.au



All information contained therein is gathered from relevant third parties sources. We cannot guarantee or give any warranty about the information provided. Interested parties must rely solely on their own enquiries.



Unit 1/46 Shores Crescent,
Diamond Beach, NSW 2430

Internal floor area: 153 m²



Plans and dimensions are made as accurately as possible, however these are to be used as a guide and slight variations may be possible.