



4 Silk Crescent, Diamond Beach

Contemporary Coastal Gem with Stunning Ocean Outlook

Discover the pinnacle of coastal living in this stunning brand-new, designer home with captivating ocean views to be built by award winning GJ Gardner Homes Taree.

Nestled in an exclusive Estate, this 4 x bedroom, 3 x bathroom masterpiece is a testament to luxury and comfort. With a double garage and a parent retreat featuring a kitchenette, this property offers an unparalleled living experience.

Your new designer home includes:

- **Ocean Views:** Wake up to breathtaking views of the ocean each morning. Sip your coffee on the balcony as you soak in the beauty of the horizon.
- **Designer Elegance:** From the moment you step inside, you'll be greeted by the exquisite design and attention to detail. High-end finishes, premium materials, and modern aesthetic make this home truly exceptional.

4  3  2 

FOR SALE
\$1,399,000

AGENTS

Luke Crane
0419 279 776
luke.crane@ljhft.com.au

AGENCY

LJ Hooker Forster | Tuncurry
(02) 6591 6400

All information contained therein is gathered from relevant third parties sources.
We cannot guarantee or give any warranty about the information provided.
Interested parties must rely solely on their own enquiries.

 **LJ Hooker**

- **Spacious Living:** With four generously sized bedrooms, there's room for the whole family or guests. Each bedroom is thoughtfully designed for comfort and style.
- **Gourmet Kitchen:** The heart of the home is the gourmet kitchen, equipped with top-of-the-line Smeg appliances and ample counter space for culinary adventures; perfect for hosting family gatherings and dinner parties.
- **Bathrooms of Luxury:** The three beautifully appointed bathrooms feature contemporary fixtures, elegant floor to ceiling tiling and a free-standing bath ensuring a tranquil retreat after a long day.
- **Double Garage:** Keep your vehicles secure and protected in the spacious double garage, complete with convenient internal access.
- **Parent Retreat with Kitchenette:** Escape to your own private sanctuary within the home. The parent retreat boasts a kitchenette, offering ultimate convenience and privacy.
- **Outdoor Oasis:** Enjoy the coastal lifestyle with an ample sized backyard and outdoor entertainment area; an ideal space for barbeques, relaxation, and soaking up the sun.

Luxury Inclusions: This home comes complete with a range of luxury inclusions. Every detail has been carefully considered.

- **Location:** Located in a prestigious Estate, this property is within easy reach of the beach, local shops, schools, and restaurants. Enjoy the tranquility of coastal living while still being close to all the conveniences.

This is more than just a house; it's a lifestyle. If you're seeking the epitome of coastal luxury, look no further. Don't miss your chance to own this spectacular home with ocean views, designer elegance, and all the amenities you could desire.

Schedule a viewing today and experience the luxury and tranquility of coastal living first hand. This is a rare opportunity that won't last long. Contact Luke Crane now on 0419 279 776 to make this dream home yours!

Disclaimer: All information contained herein is gathered from relevant third party sources. We cannot guarantee or give any warranty about the information provided. Interested parties must rely solely on their own enquiries.

MORE DETAILS

Property ID 1DYNF5Y
Property Type House
Land Area 651 m2
Including Ensuite
Air Conditioning
Toilets (3)
Floorboards
Built-in-Robes
Remote Garage
Liveability

Luke Crane 0419 279 776

Licensed Real Estate Agent | luke.crane@ljhft.com.au

LJ Hooker Forster | Tuncurry (02) 6591 6400

3/41 Kularoo Drive, FORSTER NSW 2428
forster.ljhooker.com.au | realestate@ljhforster.com.au



All information contained therein is gathered from relevant third parties sources.
We cannot guarantee or give any warranty about the information provided.
Interested parties must rely solely on their own enquiries.



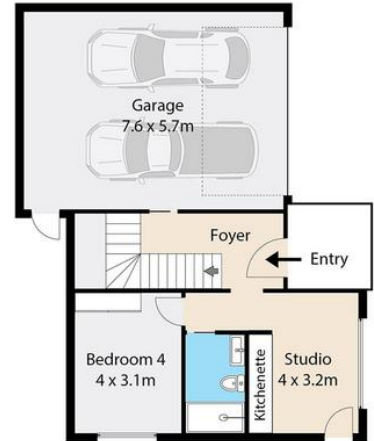
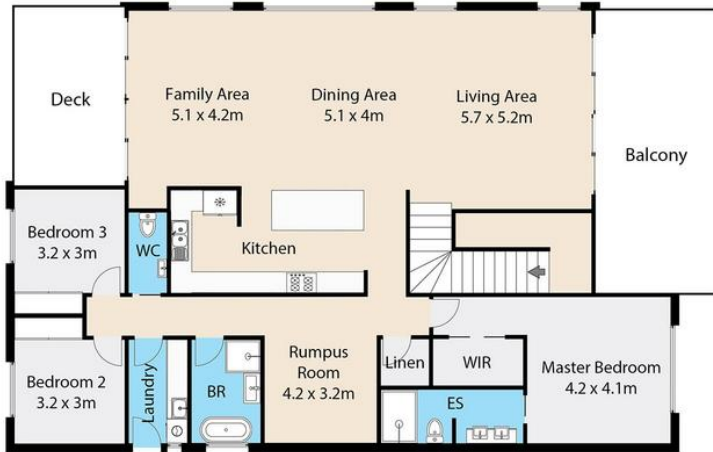
4



3



2



**4 Silk Crescent,
Diamond Beach, NSW 2430**

Internal floor area: 275 m²
Land area: 651 m²



Plans and dimensions are made as accurately as possible, however these are to be used as a guide and slight variations may be possible.