






5 Aylett Avenue, Devonport

The Right Spot

Situated in a no-through street just 5 blocks from the beach, 3 blocks from the river front and only 2 blocks to the shopping center, this character-filled home is in a great central position. The home has two decent-sized bedrooms with built-in robes and a sunroom or office which is also used as a third bedroom. The kitchen and bathroom have been updated and there is a separate dining area. Out the back there is a nice entertainment deck, secure private yard space and a great shed.

The information contained herein has been supplied to us by sources which are considered reliable and we have no reason to doubt its accuracy. However, all interested parties should make their own enquiries to verify this information to be correct. All measurements are approximate and are for illustrative purposes only.

3  1  1 

FOR SALE

Offers Over \$520,000

VIEW

Sat 23rd May @ 9:45AM - 10:15AM

AGENTS

Michael Ziegler
0409 764 219
michael.ziegler@ljhooker.com.au

Tyla Pyke
0439 228 888
tyla.pyke@ljhooker.com.au

AGENCY

LJ Hooker Devonport
0473 104 200

All information contained therein is gathered from relevant third parties sources. We cannot guarantee or give any warranty about the information provided. Interested parties must rely solely on their own enquiries.

 **LJ Hooker**

MORE DETAILS

Property ID 8UQHVM
Property Type House
Land Area 664 m2

Michael Ziegler 0409 764 219

Licensee | michael.ziegler@ljhooker.com.au

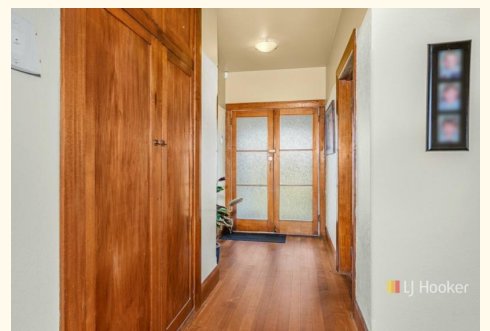
Tyla Pyke 0439 228 888

Property Representative | tyla.pyke@ljhooker.com.au

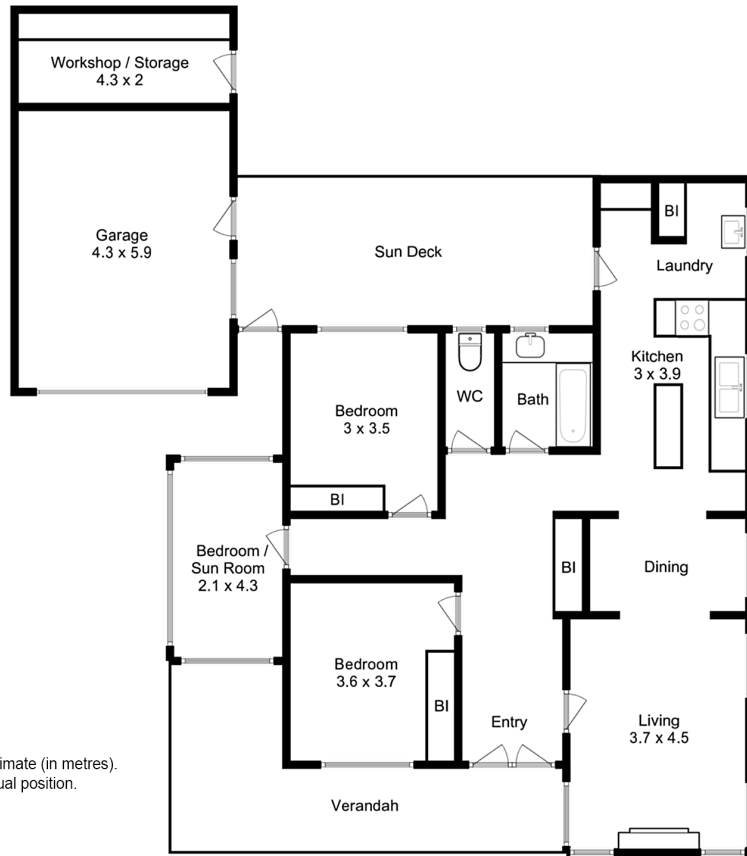
LJ Hooker Devonport 0473 104 200

16 Don Road, DEVONPORT TAS 7310

devonport.ljhooker.com.au | devonport@ljhooker.com.au



All information contained therein is gathered from relevant third parties sources.
We cannot guarantee or give any warranty about the information provided.
Interested parties must rely solely on their own enquiries.



5 Aylett Ave, Devonport

This plan is a sketch for illustration only.
 All measurements are internal and approximate (in metres).
 Outbuildings / exterior elements not in actual position.

