


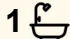



1 Bishton Street, Devonport

## Starter Home or Investment

Situated on slightly elevated block this home has a lovely outlook over the city and you can even see glimpses of the ocean. The home does need some attention in the way of floor coverings, maybe a fresh coat of paint and other bits and pieces as the price reflects. It has three bedrooms, one bathroom, a double shed and a car port as well. There is a solar system to cut the power bills down. Sitting in a good location here is an opportunity for you to own your home or start your investment portfolio.

- The information contained herein has been supplied to us by sources which are considered reliable and we have no reason to doubt its accuracy. However, all interested parties should make their own enquiries to verify this information to be correct. All measurements are approximate and are for illustrative purposes only.

3  1  3 

### FOR SALE

Offers Over \$460,000

### VIEW

Sat 2nd May @ 9:45AM - 10:15AM

### AGENTS

Michael Ziegler  
0409 764 219  
michael.ziegler@ljhooker.com.au

Tyla Pyke  
0439 228 888  
tyla.pyke@ljhooker.com.au

### AGENCY

LJ Hooker Devonport  
0473 104 200

## MORE DETAILS

Property ID 8U7HVM  
Property Type House  
Land Area 643 m<sup>2</sup>

**Michael Ziegler 0409 764 219**

Licensee | michael.ziegler@ljhooker.com.au

**Tyla Pyke 0439 228 888**

Property Representative | tyla.pyke@ljhooker.com.au

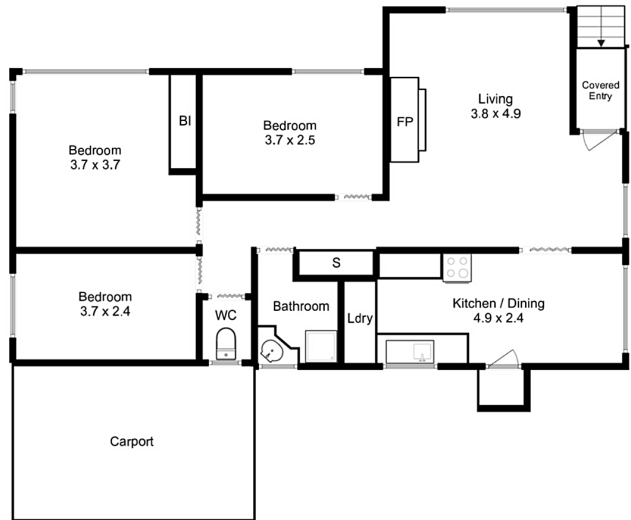
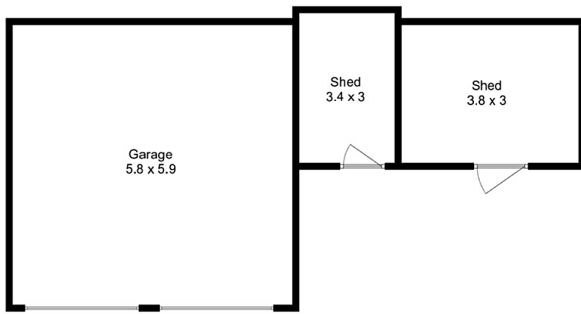
**LJ Hooker Devonport 0473 104 200**

16 Don Road, DEVONPORT TAS 7310

devonport.ljhooker.com.au | devonport@ljhooker.com.au



All information contained therein is gathered from relevant third parties sources.  
We cannot guarantee or give any warranty about the information provided.  
Interested parties must rely solely on their own enquiries.



**1 Bishton St, Devonport**

This plan is a sketch for illustration only.  
 All measurements are internal and approximate (in metres).  
 Outbuildings / exterior elements not in actual position.