

38 Cromwell Drive, Desert Springs

Location – Perfect


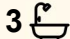
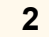
A split-level executive home positioned on top of the rise with glorious views over the golf course and the beautiful MacDonnell Ranges.

Impressive double entry doors are set back at the front while the auto lock up garage with storage loft is positioned to the left. Upon entry, prepare to be wowed with the split-level design and crisp white flair from the evident renovations.

The clean lines of the expansive ceramic tiling coupled with the use of glass and steel on the balustrades has given this established home a new lease on life.

Two minor bedrooms and the family bathroom are located towards the front of the home while the main bedroom suite is on the lower level and features a great size walk in robe, ensuite bathroom and a private outdoor deck. The guest suite with new third bathroom, is at basement level and has access via glass sliding doors to the outdoor garden area. All bathrooms are fully tiled, have seen renovations and the family bathroom has an impressive soaker tub.

The tiled family/dining space has a slow combustion heater for the winter months should you desire.

4  3  2 

FOR SALE
\$865,000

VIEW
By Appointment

AGENTS
Gail Tuxworth
0418 897 009
gtuxworth@ljhalicesprings.com.au

AGENCY
LJ Hooker Alice Springs
(08) 8950 6333

All information contained therein is gathered from relevant third parties sources.
We cannot guarantee or give any warranty about the information provided.
Interested parties must rely solely on their own enquiries.

 **LJ Hooker**

The entertainer kitchen has taken on a modern flair with plenty of storage space, a mobile central island workstation, Bosch dishwasher, pyrolytic induction oven and 900mm 4 burner induction cooktop. The glass and stainless-steel rangehood add to the appeal.

An open void from the kitchen overlooks the expansive living area with copper fireplace at the rear lower level of the home. Take the steps down and bypass the other casual dining option, a cute little deck on the lower level with outdoor views through the glass sliding doors.

The rear garden is fenced and backs onto the 1st and 9th fairways, with the Alice Springs Golf clubhouse just a short distance away.

There is no doubt the blue tiled, inground, kidney shaped pool needs a lot of work. Fix the pool and create your very own oasis to love and enjoy.

A great opportunity to buy in this Desert Springs premiere location without paying a fortune.

- Council Rates \$4,402.22
- 4-bedroom, 3-bathroom split level home
- Architecturally designed, modern renovation
- Two living area, formal and casual dining
- Entertainer kitchen, modern appliances
- Backs onto 1st and 9th fairways, golf for fun
- Double auto garage with storage loft
- Inground pool needs work, repair and enjoy

MORE DETAILS

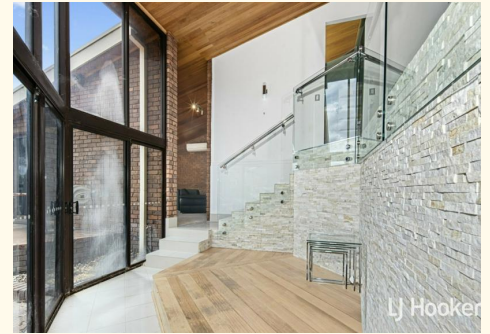
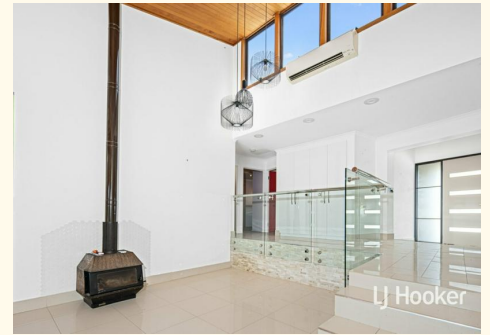
Property ID	2D6BFD5
Property Type	House
Land Area	1070 m2
Including	Air Conditioning Balcony Dishwasher Outdoor Entertaining Built-in-Robes Secure Parking Fully Fenced Remote Garage Solar Hot Water

Gail Tuxworth 0418 897 009

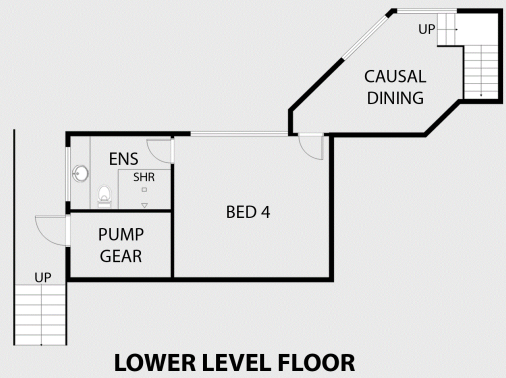
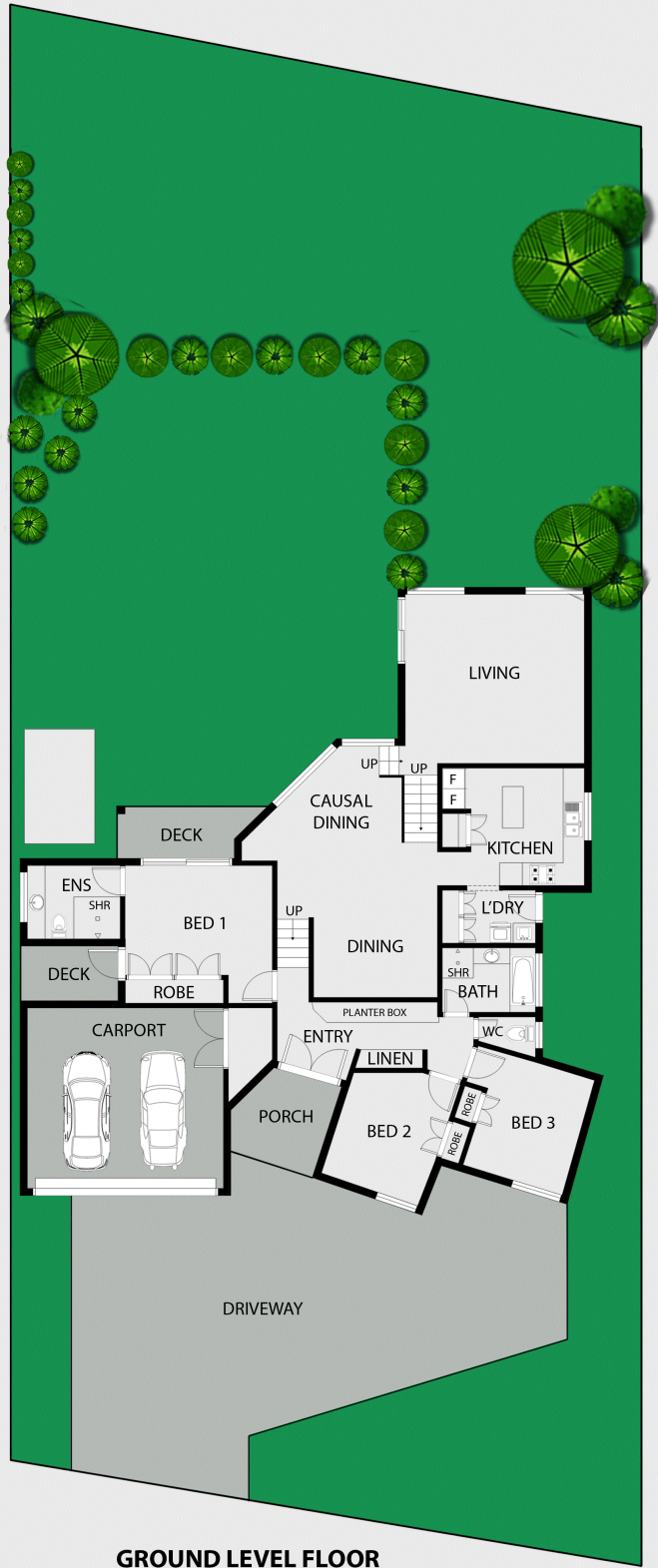
Sales Representative | gtuxworth@ljhalicesprings.com.au

LJ Hooker Alice Springs (08) 8950 6333

Suite 2 52 Hartley Street, ALICE SPRINGS NT 0870
alicesprings.ljhooker.com.au | office@ljhalicesprings.com.au



38 Cromwell Drive, Desert Springs



This floor plan including furniture, fixture measurements and dimensions are approximate and for illustrative purposes only. BoxBrownie.com gives no guarantee, warranty or representation as to the accuracy and layout. All enquiries must be directed to the agent, vendor or party representing this floor plan.



All information contained therein is gathered from relevant third parties sources. We cannot guarantee or give any warranty about the information provided. Interested parties must rely solely on their own enquiries.

