



Desert Springs, 14 Eagle Court

Eagle Eye

All eyes will focus onto this proudly renovated and immaculately presented residence backing onto the 6th tee of the Desert Springs Estate.

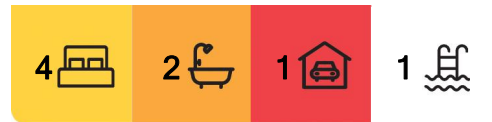
Structured bush landscaping features both front and back on the generous 1,000 sq meter, prime allotment. A tiled front facade discretely serves as an entry portico and welcomes guests inside.

Beautiful desert toned ceramic tiling features throughout the living areas while quality new carpet has been laid in all three bedrooms, plus the 4th child's bedroom or home office.

Invite your friends over and enjoy the art of elegant dining inside, or relaxed Territory style outdoor entertaining all year round. The options are yours!



Disclaimer: All information contained therein is gathered from relevant third parties sources. We cannot guarantee or give any warranty about the information provided. Interested parties must rely solely on their own enquiries.



For Sale
\$810,000

View
By Appointment

Contact
Gail Tuxworth
0418 897 009
gtuxworth@ljhalicesprings.com.au

LJ Hooker Alice Springs
(08) 8950 6333

The modern galley style kitchen will serve your needs perfectly. It boasts a double oven, dishwasher, perfectly positioned appliances and entertainer breakfast bar.

The spacious parents retreat offers a generous sized bedroom with plantation shutter window dressings, large walk-in robe and stunning ensuite bathroom. The study or nursery/child's bedroom is positioned next to the main bedroom while the remaining two bedrooms are only a step away from the artistically tiled, white and timber themed family bathroom.

Even the laundry lives up to expectations, all beautifully renovated.

Sneak to the rear of the home where the family room, with equal access to the kitchen offers glass sliding door access to the superb outdoor living and garden areas beyond.

Sit outside and enjoy the results of the landscaped and manicured rear garden. A flourishing trimmed hedge will provide privacy when entertaining as you can take in the breathtaking sights of the golf course landscape and hillscape behind.

A dip in the mineral water pool will provide relief from the summer heat while enjoying the outdoor life. It couldn't get much better!

- Outstanding location, 1,000 sqm allotment
- Council Rates \$3,554.71 pa
- Potentially \$900 pw rental return
- Elegant family home with mineral pool
- Surrounded by other quality homes

More About this Property

| | |
|----------------------|--|
| Property ID | 2C6CFD5 |
| Property Type | House |
| Land Area | 1000 m ² |
| Including | Ensuite Air Conditioning Toilets (2) Pool Dishwasher Outdoor Entertaining Built-in-Robes Fully Fenced Internal Laundry Walk in robe |

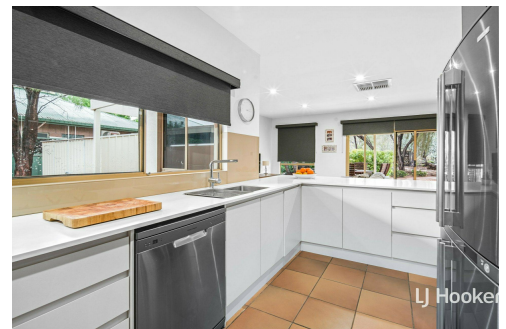
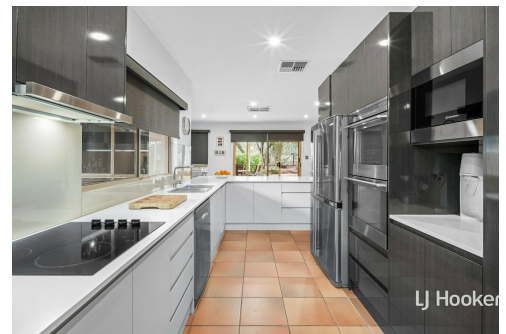
Gail Tuxworth 0418 897 009

Sales Representative | gtuxworth@ljhalicesprings.com.au

LJ Hooker Alice Springs (08) 8950 6333

Suite 2 52 Hartley Street, ALICE SPRINGS NT 0870

alicesprings.ljhooker.com.au | office@ljhalicesprings.com.au



**LJ Hooker Alice Springs
(08) 8950 6333**

Disclaimer: All information contained therein is gathered from relevant third parties sources. We cannot guarantee or give any warranty about the information provided. Interested parties must rely solely on their own enquiries.