

Sold



5 Lutana Grove, Dernancourt

Sold by Luke Mitchell of LJ Hooker Adelaide Metro

Hidden within a quiet, leafy pocket of Dernancourt, this home instantly captures your attention. From its elevated position and sweeping hillside views to the charm of its Spanish-inspired architecture, this is more than a home, it's an experience.

From the moment you pass through the secure gates, you are welcomed to a private retreat where every day feels a little slower, calmer and more connected to nature on a generous 1,250m2 approx. allotment.

Spanish-inspired architecture makes its presence felt from archways, textured walls and terracotta tones giving the home warmth and character rarely found today. Inside, generous living and dining areas take full advantage of the hillside outlook, with natural light pouring in through wide windows that frame the changing colours of the hills beyond.

For entertainers, the home offers endless possibilities. The kitchen, complimented with stone benchtops, is perfectly positioned to enjoy the views, while the adjoining dining and lounge areas spill seamlessly onto the pergola. Here, you'll find the best seat in the house,

3 2 2

FOR SALE
Contact Agent

AGENTS

Luke Mitchell
0411 703 055
luke.mitchell@ljhadelaidemetro.com.au

Julian Rullo
0407846417
julian.rullo@ljhadelaidemetro.com.au

AGENCY

LJ Hooker St Peters
(08) 8362 8008

overlooking the sparkling tiled pool and spa, surrounded by a lush, terraced garden that steps down the slope in layers of greenery and colour.

For those with a green thumb, the garden is a haven. Established fruit trees, meandering paths and private nooks create a sense of sanctuary, the kind of place where weekends are spent pruning, exploring or simply sitting with a coffee while the kids enjoy all that the gardens have to offer.

As the sun sets, the alfresco becomes the ultimate spot for long dinners with family and friends, the hills glowing softly in the distance.

The pool house and separate retreat offer flexibility for guests or extended family, while the cellar is ready to be stocked with local Barossa and Adelaide Hills wines. With fresh carpet, shutter blinds and three good-sized bedrooms, including a master with ensuite. The home balances comfort, privacy and space beautifully.

Located in one of Dernancourt's most peaceful pockets, you're within walking distance to Linear Park, close to schools, shops and cafes, and only a short drive to the city. It's the kind of home that invites you to slow down and enjoy the best of Adelaide's hillside lifestyle.

What we love:

Classic Spanish Mission-style architecture

Three bedrooms, separate study and master with ensuite

Separate living and dining areas with sweeping hillside views

Stone-topped kitchen overlooking the hills

Tiled swimming pool and spa with pool house and retreat

Terraced garden with multiple fruit trees and private sitting areas

Double garage, cellar and secure entry from the street

Fresh carpet and paint throughout

Alfresco entertaining area with panoramic views

Peaceful, family-friendly location close to Linear Park, schools and shops

Purchasing this property as an investment? Talk with Kirsty Clark from our PM team and see why our Property Management department is #1 amongst all the LJ Hooker offices Worldwide.

- * All information provided has been obtained from sources we believe to be accurate, however, we cannot guarantee the information is accurate and we accept no liability for any errors or omissions (including but not limited to a property's land size, floor plans and size, building age and condition). Interested parties should make their own enquiries and obtain their own legal advice.

RLA 61345 RLA 282965 RLA 231015

MORE DETAILS

Property ID 2DMKFDZ
Property Type House
Land Area 1250 m²

Luke Mitchell 0411 703 055

Sales Consultant | luke.mitchell@ljhadelaidemetro.com.au

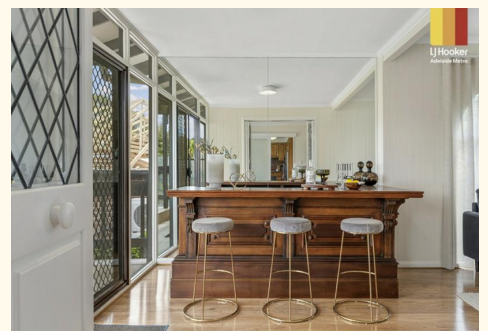
Julian Rullo 0407846417

Sales Consultant | julian.rullo@ljhadelaidemetro.com.au

LJ Hooker St Peters (08) 8362 8008

2a Portrush Road, PAYNEHAM SA 5070

stpeters.ljhooker.com.au | stpeters@ljhadelaidemetro.com.au



All information contained therein is gathered from relevant third parties sources.
We cannot guarantee or give any warranty about the information provided.
Interested parties must rely solely on their own enquiries.



DISCLAIMER

PLANS SHOWN ARE FOR MARKETING PURPOSES ONLY, ALL DIMENSIONS ARE APPROXIMATE AND NOT TO SCALE. THEY ARE SUBJECT TO ERRORS AND INACCURACIES AND NO LIABILITY WILL BE ACCEPTED. INTERESTED PARTIES SHOULD MAKE THEIR OWN ENQUIRIES.

IMAGES AND FLOORPLAN BY:
IN-HOUSE
 IMAGING
inhouseimaging.com.au