



12 Nightshade Close, Denham Court

Custom Built Family Home

Positioned in a quiet, well-established street within walking distance to local parklands, this custom-built double storey residence delivers an outstanding combination of scale, quality and thoughtful design in one of Denham Court's most desirable pockets.

From the moment you arrive, the home immediately showcases its presence, with a well-considered facade and a sense of space that continues throughout. Inside, high-end finishes, a refined colour palette and quality inclusions create a home that feels both luxurious and inviting.

Upstairs is dedicated to family comfort, offering four oversized bedrooms, each generous in proportion and designed to accommodate growing families with ease. A central upstairs living area provides the perfect additional retreat, flowing seamlessly onto a private balcony where you can unwind and enjoy elevated outlooks.

Downstairs, versatility is key, with a flexible floorplan offering the option for a fifth bedroom or a dedicated media room, ideal for guests or additional living space. The heart of the home is the expansive kitchen, finished to a high standard and complete with a large walk-in butler's pantry, ample bench space and quality appliances, all overlooking the open plan living and dining area.

5 3 2

FOR SALE
Expressions Of Interest

VIEW
By Appointment

AGENTS
Mitchell Crawford
0421 504 007
mitchell@ljhgroup.com.au

Tanisha McKenzie
0437 154 019
tanisha@ljhgroup.com.au

AGENCY
LJ Hooker United Group
1800 486 4833

All information contained therein is gathered from relevant third parties sources.
We cannot guarantee or give any warranty about the information provided.
Interested parties must rely solely on their own enquiries.

LJ Hooker

The laundry has been thoughtfully designed with extensive storage, catering perfectly to the demands of a busy household.

Step outside and the home continues to impress, with a fully undercover entertaining area that creates the ultimate setting for year-round family gatherings. The side of the home has been fully concreted, allowing for easy, low-maintenance access directly through to the garage, which also features a convenient external door entry for added functionality.

Combining space, flexibility and a premium level of finish, all within a convenient and family-friendly location, this is a home that truly ticks every box.

- Approx.

^ Subject to Council Approval.

Webpage enquiries must include a contact number and email address to receive a response. Photo ID is required for all inspections. While care has been taken in presenting this information, prospective purchasers should confirm details independently.

MORE DETAILS

Property ID	T4J1T
Property Type	House

Mitchell Crawford 0421 504 007

Principal | mitchell@ljhunitedgroup.com.au

Tanisha McKenzie 0437 154 019

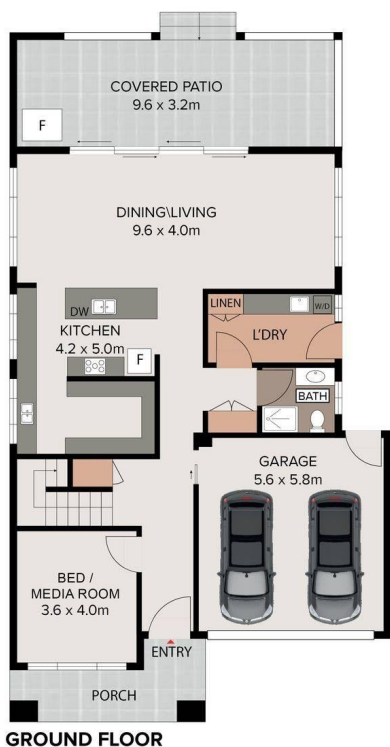
Sales Executive | tanisha@ljhunitedgroup.com.au

LJ Hooker United Group 1800 486 4833

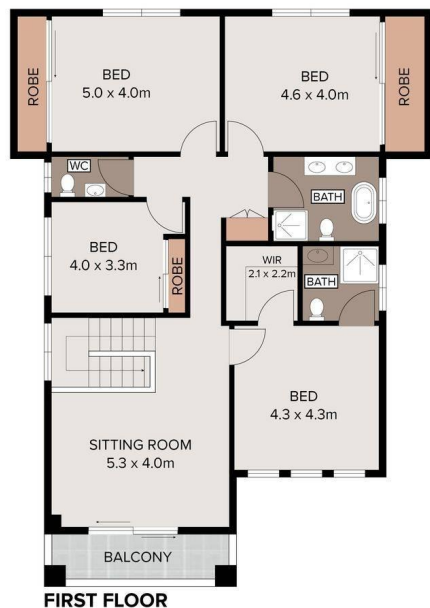
41 Wentworth Road, BRINGELLY NSW 2556

unitedgroup.ljhooker.com.au | reception@ljhunitedgroup.com.au

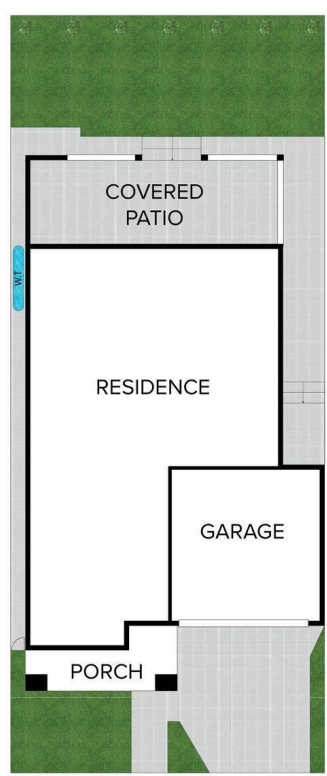




GROUND FLOOR



FIRST FLOOR



SITE PLAN

12 Nightshade Close, Denham Court

Disclaimer: Floor plans and site plans are intended as a guide only. They are not part of any legal document or title and are subject to errors, omission, and inaccuracies and should not be used as reference. Sizes and dimensions are approximate only. Interested parties should make their own enquiries. Floor plan by: Flex Media

All information contained therein is gathered from relevant third parties sources. We cannot guarantee or give any warranty about the information provided. Interested parties must rely solely on their own enquiries.

