

2/15 Burne Avenue, Dee Why

Sunny & Central First Floor Apartment

Quiet, convenient, and affordable, this neat and tidy two bedroom apartment is perfectly positioned on the fringe of Dee Why's vibrant shopping centre.

Set on the first floor of a well-maintained full brick building, it features fresh updates including paint, blinds, and flooring throughout. The bright open plan living and dining area flows seamlessly to a covered balcony, bathed in warm northerly sunlight. Comfort is assured year round with a reverse cycle air conditioning, ideal for both summer and winter.

One of only eight in the complex, the apartment also includes a single lock-up garage, providing both security and convenience.

With city buses, supermarkets, and a diverse range of shops just a short stroll away, this is an ideal opportunity for first home buyers or savvy investors looking for lifestyle and location in one smart package.

2 🏠 1 🚿 1 🚗

FOR SALE

Auction Guide \$830,000

AGENTS

Christian Ryals

0404 471 287

christian.ryals@ljhooker.com.au

Mark Bushell

0401 313 111

mark.bushell@ljhooker.com.au

AGENCY

LJ Hooker Dee Why

(02) 9971 2877

All information contained therein is gathered from relevant third parties sources.
We cannot guarantee or give any warranty about the information provided.
Interested parties must rely solely on their own enquiries.

 **LJ Hooker**

MORE DETAILS

Property ID 1NMPGAX
Property Type Apartment

Christian Ryals 0404 471 287

Principal | christian.ryals@ljhooker.com.au

Mark Bushell 0401 313 111

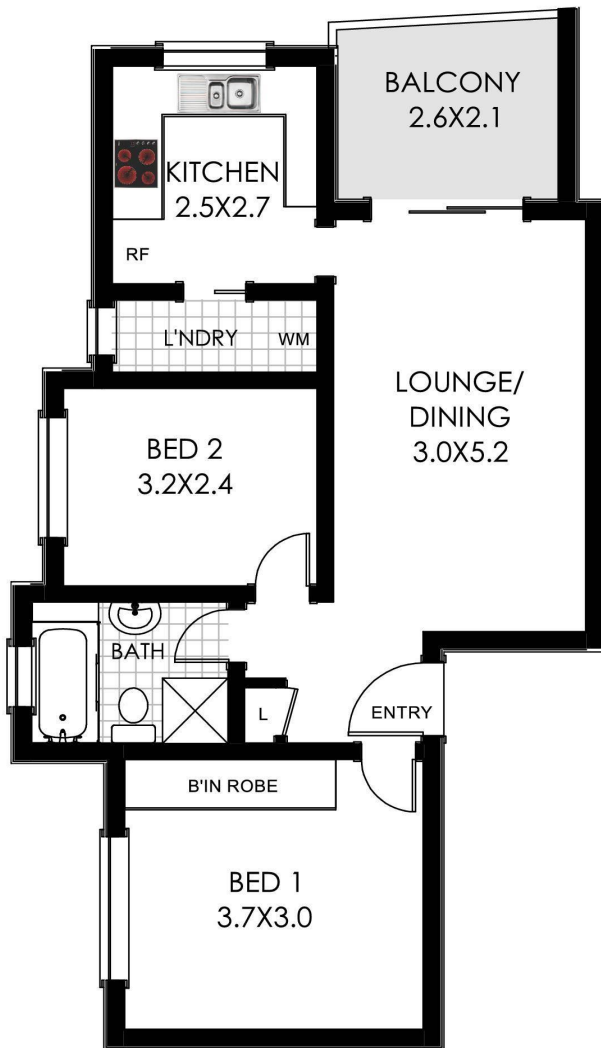
Sales Manager | mark.bushell@ljhooker.com.au

LJ Hooker Dee Why (02) 9971 2877

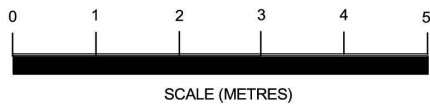
854 Pittwater Road, DEE WHY NSW 2099

deewhy.ljhooker.com.au | deewhy@ljhooker.com.au





LOCK-UP GARAGE
2.6X5.5



LJ Hooker
Dee Why

2/15 Burne Avenue **DEE WHY**

All information contained herein is gathered from sources we consider to be reliable. However we cannot guarantee or give any warranty about the information provided and interested parties must solely rely on their own enquiries. General Site plan is approximate only and shows a general layout of the land.