

1 Kukerin Way, Dawesville

## Great Street Appeal Corner Family Home With Huge Side Access

- 4x2x2
- 2007 Build by West Australian Housing Centre
- 244m<sup>2</sup> build area
- 200m<sup>2</sup> internal floor area
- 688m<sup>2</sup> lot
- Corner block with extended side access
- Container shed/storage
- Natural gas

If you looking at spending more time with family & friends then this low maintenance home is for you.

Featuring parking for caravan plus a side access for boats & trailers extending along the entire boundary wall, this property is ideal for those looking for ample parking space, sit down entertaining areas plus a relative lock up & go lifestyle.

Boasting an elevated deck, firepit area, huge alfresco area leading from the remote double lock up garage, plus a bonus container shed

4 2 2

**FOR SALE**

Best Offer Over \$799,000

**AGENTS**

Tony Dos Santos

0466 550 512

tdossantos.mandurah@ljhooker.com.au

**AGENCY**

LJ Hooker Mandurah

(08) 9586 5555

All information contained therein is gathered from relevant third parties sources. We cannot guarantee or give any warranty about the information provided. Interested parties must rely solely on their own enquiries.

LJ Hooker

this corner home has absolute great street appeal and presence.

This brick & Colourbond home is located on 688m2 is a winner with its 4 bedrooms, two bathrooms, private lounge or games room plus an expansive open plan kitchen & dining area.

The kitchen is modern and efficient with ample bench space and stainless steel appliances, including a Westinghouse free standing 6plate gas stove and dishwasher.. The kitchen overlooks a spacious family room, and is located adjacent to the Alfresco area.

The master bedroom features en suite and walk in robe, and the remaining 3 bedrooms are located to the rear of the house and feature family bathroom.

Featuring:

- 2Split a/c in family room & master bedroom
- Private lounge
- 1,5kw solar
- Container type shed
- Side access for multiple boat or caravan.
- Large street frontage \_\_\_\_\_m
- Elevated deck area
- Retic
- Family bathroom bath & shower
- Firepit area
- Expansive Open plan

ALL THIS AND ONLY MINUTES TO A QUALITY SCHOOL, CHILD MINDING FACILITIES, THE ESTUARY AND BOAT RAMP, A SHORT DRIVE TO THE 'CUT ' GOLF COURSE, AND SHOPPING.

## MORE DETAILS

Property ID	4SAFFF2
Property Type	House
Land Area	688 m2

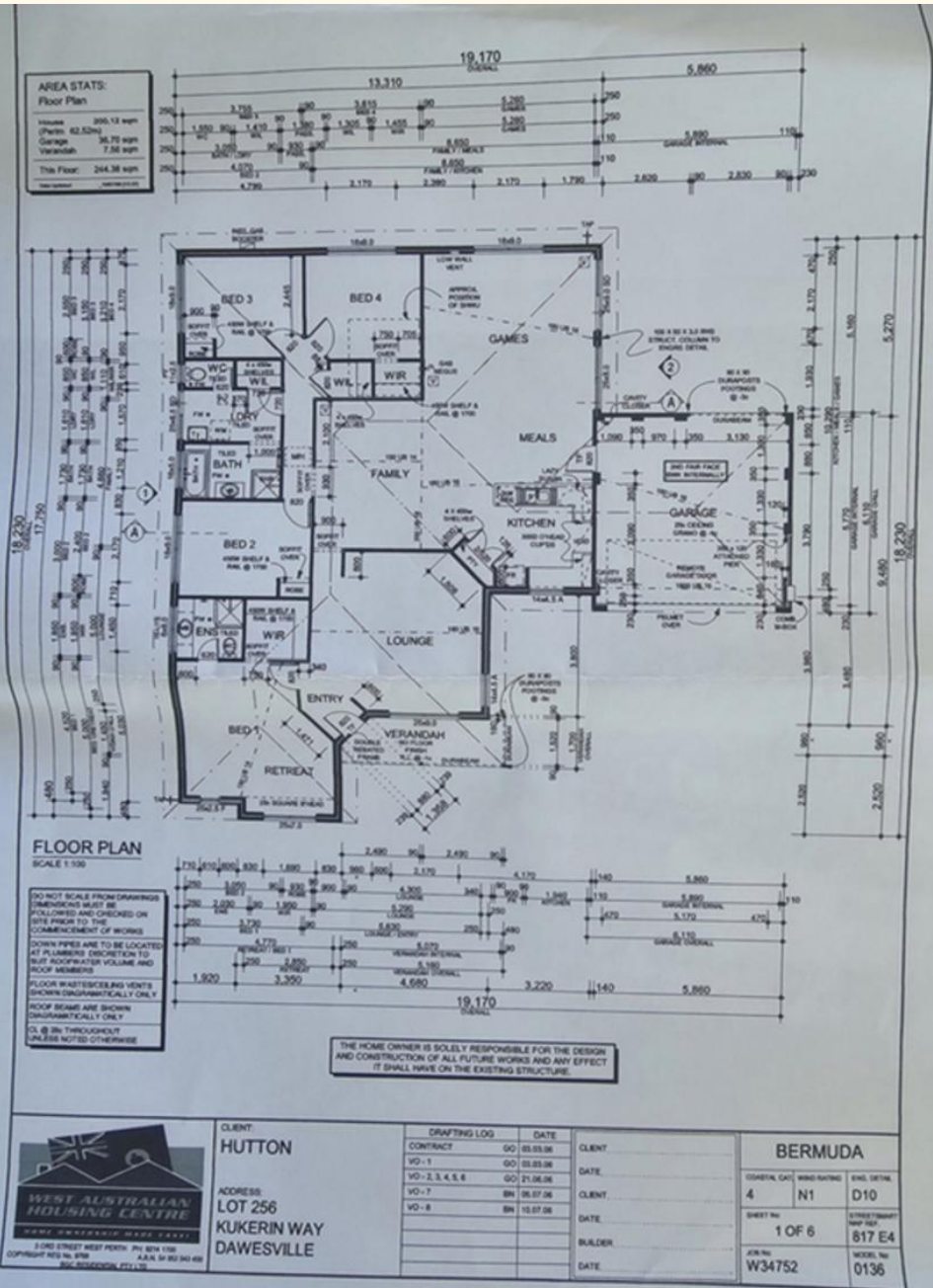
**Tony Dos Santos 0466 550 512**

Sales Executive | [tdossantos.mandurah@ljhooker.com.au](mailto:tdossantos.mandurah@ljhooker.com.au)

**LJ Hooker Mandurah (08) 9586 5555**

68 Mandurah Terrace, MANDURAH WA 6210  
[mandurah.ljhooker.com.au](http://mandurah.ljhooker.com.au) | [hello.south@ljhpxp.com.au](mailto:hello.south@ljhpxp.com.au)





All information contained therein is gathered from relevant third parties sources. We cannot guarantee or give any warranty about the information provided. Interested parties must rely solely on their own enquiries.

