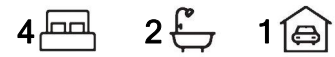




Davoren Park, 550 Stebonheath Road

Perfect for the Growing Family!



Proudly presented by Gareth Dickins of LJ Hooker, this beautifully maintained 4-bedroom home is just 4.5 years old-offers comfort, space, and modern living for today's growing family.

Boasting plenty of features including:

- High ceilings throughout the home.
- Spacious master bedroom features a walk-in robe and private ensuite,
- Bedrooms 2 and 3 are fitted with built-in robes for added convenience.
- The fourth bedroom, positioned at the front of the home, offers versatility and could easily serve as a second living area or a home office
- The main bathroom offers plenty of space
- At the heart of the home, a spacious open-plan living and dining area is overlooked by a sleek modern kitchen, complete with ample cupboard space, quality appliances, and a dishwasher

For Sale

\$590,000 - \$630,000

View

ljhooker.com.au/672KFDC

Contact

Gareth Dickins

0417883329

gareth.dickins@ljhces.com.au

Bradley Clarke

0422 070 240

brad.clarke@ljhces.com.au



**LJ Hooker Craigmore | Elizabeth |
Salisbury
(08) 8255 9555**

Disclaimer: All information contained therein is gathered from relevant third parties sources.

We cannot guarantee or give any warranty about the information provided. Interested parties must rely solely on their own enquiries.

- Quality flooring and elegant window furnishings throughout
- Ducted reverse cycle air conditioning ensures year-round comfort.
- A large solar system has been installed to help reduce those energy bills

Step outside to a generous veranda area-ideal for entertaining-overlooking a beautiful low-maintenance garden. Not to mention, the oversized single garage under the main roof offers internal access to the home as well as direct access to the rear yard.

Location Highlights:

Conveniently positioned near John Hartley School and the popular John McVeity Centre, this home offers easy access to a variety of community and sporting events. Just a short drive away, Munno Para Shopping City provides a great selection of retail stores, supermarkets, and dining options to make everyday living easy.

You'll also find added convenience just moments away with a nearby service station and the Eyre Shopping Precinct, which includes Drakes Supermarket, a medical clinic, and a variety of other specialty stores and services-everything you need right at your fingertips.

Don't miss out on this fantastic family home! Give Gareth Dickins a call on 0417 883 329 for more information.

Disclaimer:

We have in preparing this document used our best endeavours to ensure the information contained is true and accurate, but accept no responsibility and disclaim all liability in respect to any errors, omissions, inaccuracies or misstatements contained. Prospective purchasers should make their own enquiries to verify the information contained in this document.

RLA155355

More About this Property

Property ID	672KFDC
Property Type	House
Land Area	300 m2

Gareth Dickins 0417883329

Sales Representative | gareth.dickins@ljhces.com.au

Bradley Clarke 0422 070 240

Sales Representative | brad.clarke@ljhces.com.au

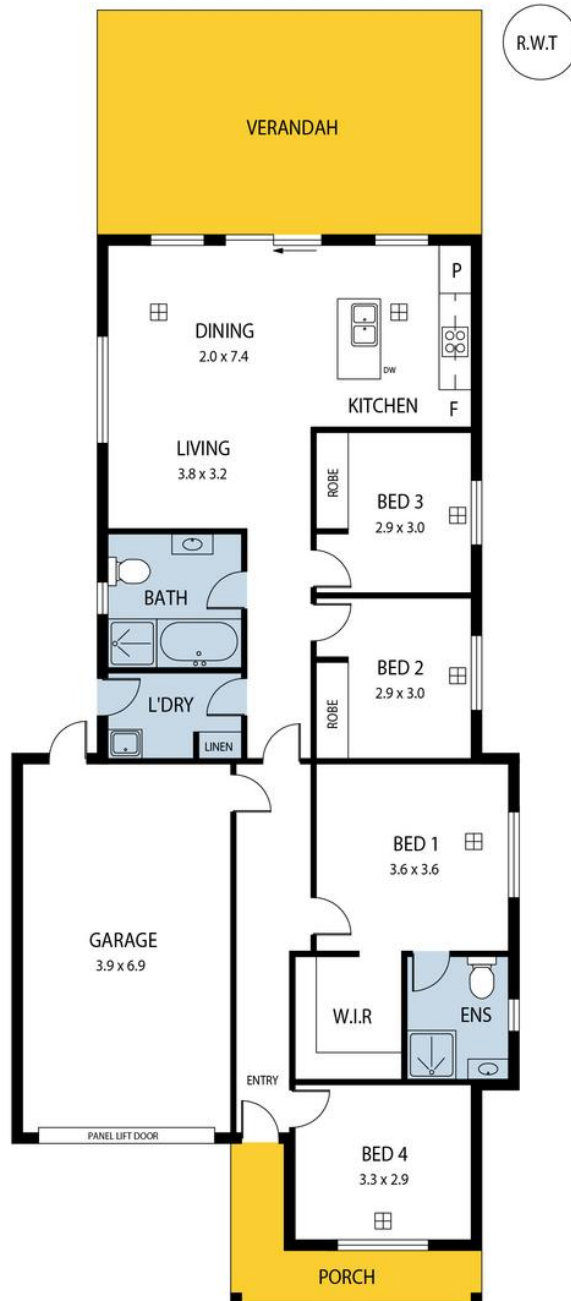
LJ Hooker Craigmores | Elizabeth | Salisbury (08) 8255 9555

Shop 17, Craigmores Village, Yorktown Road, CRAIGMORE SA 5114
craigmoreselizabeth.ljhooker.com.au | Office@ljhces.com.au



Disclaimer: All information contained therein is gathered from relevant third parties sources. We cannot guarantee or give any warranty about the information provided. Interested parties must rely solely on their own enquiries.

LJ Hooker Craigmores | Elizabeth | Salisbury (08) 8255 9555



550 Stebonheath Road, Davoren Park

DISCLAIMER: Floorplan and area calculation are approximate and for illustration purposes only.
Produced by Property Portraits

Interior	107m ²	171m²
Exterior	37m ²	
Garage	27m ²	
		TOTAL