



Davoren Park, 53 Fordingbridge Road

Perfect for Families or Investors!

Welcome to this delightful 3-bedroom home, presented by Andrew Rose of LJ Hooker. Perfect for families or investors alike, this property boasts a wide 18.90 metre frontage with no easements and is situated on a generous 691 sqm block (approx.), offering ample space and comfort.

The home features built-in wardrobes in the master bedroom, providing plenty of storage. With a good-sized lounge and a separate dining room, you'll have plenty of space for family gatherings and entertaining guests. Stay comfortable year-round with split system reverse cycle air conditioning.

The outdoor area is perfect for relaxing, with a verandah that overlooks easy-care gardens, ideal for outdoor dining and leisure. Additionally, the property includes undercover parking and a large shed, ensuring ample storage space.



For Sale
UNDER CONTRACT BY ANDREW ROSE

View
ljhooker.com.au/65PHFDC

Contact
Andrew Rose
0421 988 597
andrew.rose@ljhcs.com.au



Disclaimer: All information contained therein is gathered from relevant third parties sources. We cannot guarantee or give any warranty about the information provided. Interested parties must rely solely on their own enquiries.

LJ Hooker Craigmore | Elizabeth | Salisbury
(08) 8255 9555

Key Features:

- 691 sqm Allotment (approx.)
- Large Shed
- Laundry with External Access
- Large Backyard

Specifications:

CT / 5112/533
Council / Playford
Built / 1965
Land / 691m² (approx.)
Frontage / 18.90m (approx.)
Easements / NIL
Estimated rental assessment / \$450-\$470

Convenience is key in this peaceful Davoren Park pocket, with Garden College - Elizabeth Campus, bus stops, Kalara Reserve, Chesterman Reserve, and Aura Reserve just a short stroll away. Munno Para Shopping City is minutes away, and Broadmeadows and Smithfield stations are easily accessible. Nearby schools include John Hartley School, St. Columba College, and Swallowcliffe School. Don't miss out on this promising opportunity for a tailored transformation.

This charming home combines convenience with appeal, making it a must-see. Whether you're looking for a new family home or a great investment opportunity, this property ticks all the boxes. Contact Andrew Rose at LJ Hooker today to arrange your inspection! Don't miss out on this fantastic opportunity!

Disclaimer:

We have in preparing this document used our best endeavours to ensure the information contained is true and accurate, but accept no responsibility and disclaim all liability in respect to any errors, omissions, inaccuracies or misstatements contained. Prospective purchasers should make their own enquiries to verify the information contained in this document.

RLA155355

More About this Property

Property ID	65PHFDC
Property Type	House
House Size	100 m ²
Land Area	600 m ²
Including	Workshop Fully Fenced

Andrew Rose 0421 988 597

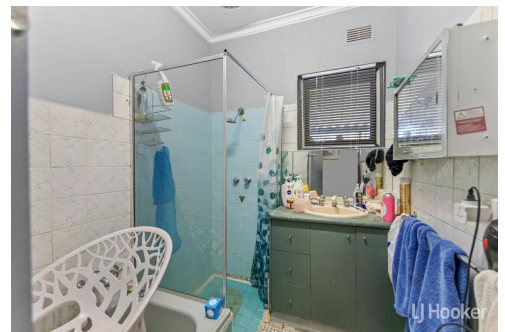
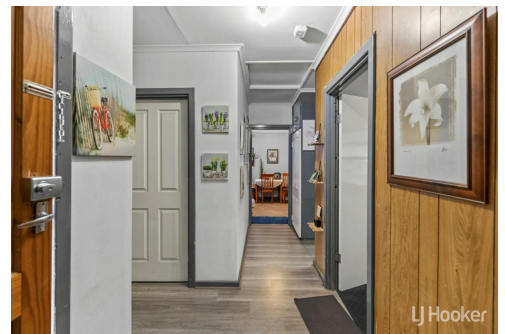
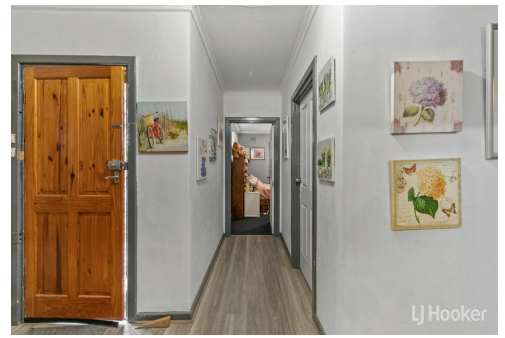
Senior Sales Representative | andrew.rose@ljhces.com.au

LJ Hooker Craigmores | Elizabeth | Salisbury (08) 8255 9555

Shop 17, Craigmores Village, Yorktown Road, CRAIGMORE SA 5114
craigmoreselizabeth.ljhooker.com.au | Office@ljhces.com.au



Disclaimer: All information contained therein is gathered from relevant third parties sources. We cannot guarantee or give any warranty about the information provided. Interested parties must rely solely on their own enquiries.



LJ Hooker Craigmores | Elizabeth | Salisbury (08) 8255 9555



53 Fordingbridge Road, Davoren Park

INTERNAL - 105.2 SQM
EXTERNAL - 78.1 SQM
TOTAL - 183.3 SQM

Please Note: Every care has been taken to verify the correctness of the areas and details used in this leaflet. No warranty or representation is given or made as to the correctness of the information supplied and neither the owners, illustrator nor the Agent accept responsibility for errors or omissions. The sketch is for illustration purposes only and intending purchasers should satisfy themselves independently regarding sizes, layout and location of the property. Please check with local council that all structures are approved by council.