



Davoren Park, 5 Timothy Court

Charming Home with Endless Potential

Nestled in a prime location, this beautifully maintained home is situated on a good sized 505sqm (approx.) allotment. Perfectly suited for easy-care living, this property has been beautifully kept.

The interior of the property is stunning throughout the entire home. Within you will find three generously sized bedrooms, a kitchen with plenty of space, an adjacent roomy dining area, formal sitting room / lounge area to the front, there is also heating and cooling for all year-round comfort.

There is a double length driveway with double gates for secure parking leading to the rear yard where you will find the rear yard is also low maintenance, so this home is great for easy care living.

Whether you are an investor, first homebuyer or looking to downsize this home ticks all the



For Sale
Please Call

View
ljhooker.com.au/66DSFDC

Contact
Andrew Rose
0421 988 597
andrew.rose@ljhces.com.au



Disclaimer: All information contained therein is gathered from relevant third parties sources. We cannot guarantee or give any warranty about the information provided. Interested parties must rely solely on their own enquiries.

**LJ Hooker Craigmore | Elizabeth |
Salisbury
(08) 8255 9555**

right boxes.

Additional Highlights :

- Three spacious bedrooms
- Expansive, fully fenced backyard
- Freshly painted through out
- Low maintenance yard back and front
- Convenient double gates with drive-through access to the rear

Specifications:

CT / 5723/282

Council / Playford

Built / 1960

Land / 505m2 (approx)

Frontage / 16.25m (approx.)

Easements / Refer CT

Rental Estimate / \$400 - \$430 per week

- Subject to Party Wall Rights over the land marked a (RE 8755457)
- Together with party wall rights over the land marked B (RE 8755457)

Conveniently located near John Hartley School and the popular John McVeity Centre, this property places a variety of sporting and community events at your doorstep, ensuring your family will always have exciting activities to enjoy. For your shopping needs, Munno Para Shopping City is just a short drive away, offering a wide range of retail stores, supermarkets, and dining options, making everyday errands a breeze.

Don't miss this opportunity to secure a fantastic home in a prime location. For more information or to arrange a viewing, contact Andrew Rose at 0421 988 597, or visit during the open home inspection!

Disclaimer:

We have in preparing this document used our best endeavours to ensure the information contained is true and accurate, but accept no responsibility and disclaim all liability in respect to any errors, omissions, inaccuracies or misstatements contained. Prospective purchasers should make their own enquiries to verify the information contained in this document.

RLA155355

More About this Property

Property ID	66DSFDC
Property Type	House
Land Area	505 m ²

Andrew Rose 0421 988 597

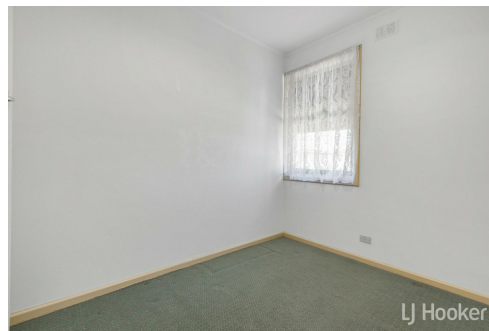
Senior Sales Representative | andrew.rose@ljhces.com.au

LJ Hooker Craigmores | Elizabeth | Salisbury (08) 8255 9555

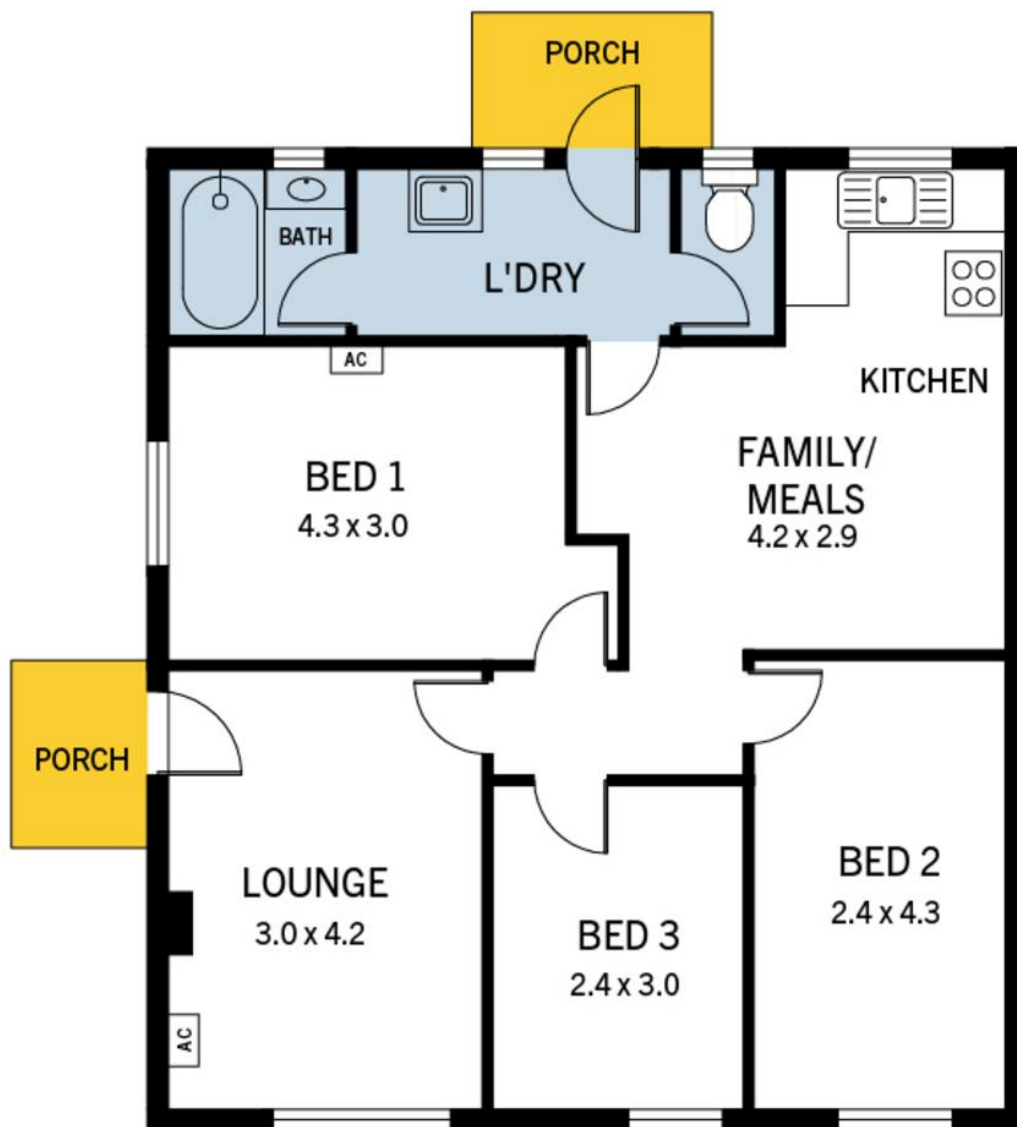
Shop 17, Craigmores Village, Yorktown Road, CRAIGMORE SA 5114
craigmoreselizabeth.ljhooker.com.au | Office@ljhces.com.au



Disclaimer: All information contained therein is gathered from relevant third parties sources. We cannot guarantee or give any warranty about the information provided. Interested parties must rely solely on their own enquiries.



LJ Hooker Craigmores | Elizabeth | Salisbury (08) 8255 9555



5 Timothy Ct, Davoren Park

DISCLAIMER: Floorplan and area calculation are approximate and for illustration purposes only.

Produced by **Property Portraits**

Interior 75m²
Exterior 4m²

79m²
TOTAL



**LJ Hooker Craigmore | Elizabeth |
Salisbury
(08) 8255 9555**

Disclaimer: All information contained therein is gathered from relevant third parties sources. We cannot guarantee or give any warranty about the information provided. Interested parties must rely solely on their own enquiries.