



25 Kingsbury Street, Davoren Park

Smart Buying Starts Here - Ideal First Home or Investment




Set on a generous 492sqm allotment, this solid 1962-built home presents a practical opportunity with long-term appeal. Now offered to the market and ready for its next chapter, this property is ideally suited to first home buyers seeking an affordable entry or investors looking for a reliable addition to their portfolio. A straightforward opportunity that allows you to purchase with confidence and hold comfortably.

Features Include:

- Three well-proportioned bedrooms, all featuring polished hardwood floors
- Functional combined kitchen and meals area
- Split-system window unit providing heating and cooling
- Undercover outdoor entertaining area
- Undercover carport plus extended driveway offering ample off-street parking
- Currently tenanted until September 2026 with excellent long-term occupants

Positioned just a five-minute drive from Elizabeth Shopping Centre and within walking distance to public transport, parks and local community facilities, this address delivers everyday convenience in a well-established location.

All information contained therein is gathered from relevant third parties sources. We cannot guarantee or give any warranty about the information provided. Interested parties must rely solely on their own enquiries.

3  1  1 

FOR SALE
\$449,000 - \$469,000

AGENTS

Ashley Palazzo
0414 347 884
ashleyp@ljhsales.com.au

Dean King
0499 497 898
deank@ljhsales.com.au

AGENCY

LJ Hooker Property Specialists
(08) 8289 6660

 **LJ Hooker**

All information provided has been obtained from sources we believe to be accurate, however, we cannot guarantee the information is accurate and we accept no liability for any errors or omissions (including but not limited to a property's land size, floor plans and size, building age and condition). Interested parties should make their own enquiries and obtain their own legal and financial advice. Should this property be scheduled for auction, the Vendor's Statement may be inspected at our LJ Hooker Property Specialists Real Estate office for 3 consecutive business days immediately preceding the auction and at the auction for 30 minutes before it starts.

RLA 208516

MORE DETAILS

Property ID	2CS7GJU
Property Type	House
House Size	81 m2
Land Area	492 m2
Including	Air Conditioning

Ashley Palazzo 0414 347 884

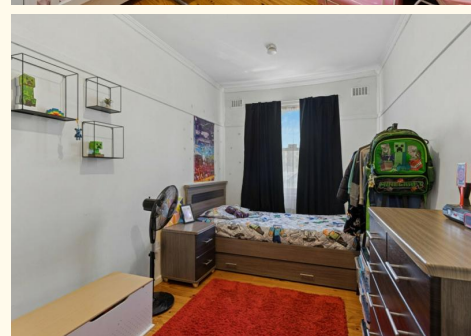
Sales Specialist | ashleyp@ljhsales.com.au

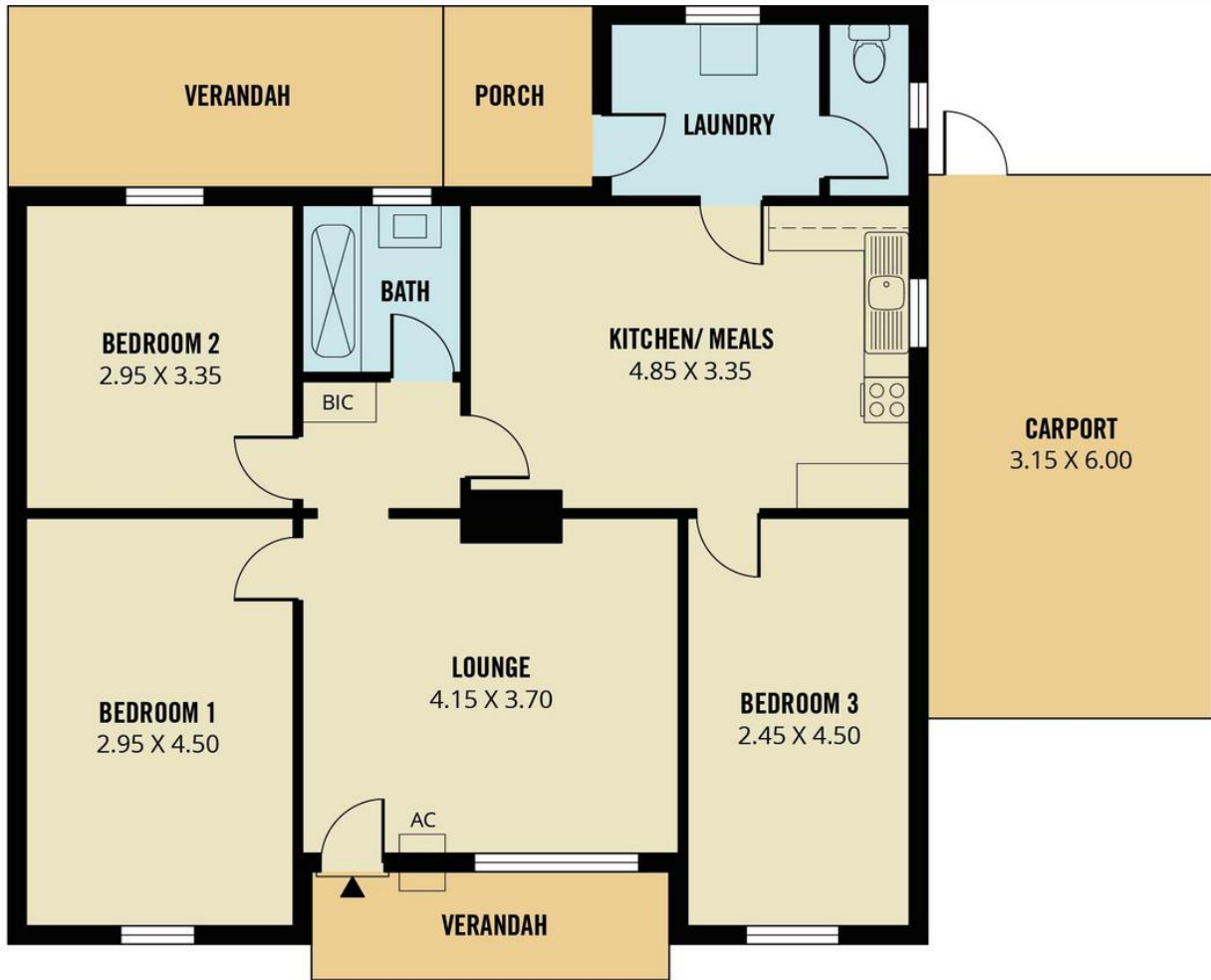
Dean King 0499 497 898

Sales Specialist | deank@ljhsales.com.au

LJ Hooker Property Specialists (08) 8289 6660

Shop 2, 1007 North East Road, RIDGEHAVEN SA 5097
propertyspecialists.ljhooker.com.au | info@ljhsupport.com.au

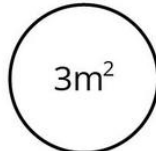




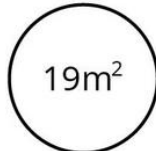
TOTAL



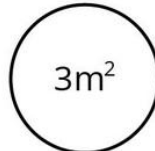
Living



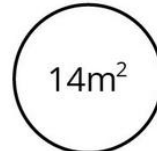
Shed



Carport



Porch



Verandah

Scale in metres. This drawing is for illustration purposes only. All measurements are approximate and details intended to be relied upon should be independently verified.

Produced by **The Fotobase Group**