

Davoren Park, 25 Dartmouth Street

Charming Family Home on a Spacious 640m² (approx.) Allotment!

Presented by Andrew Rose of LJ Hooker, this delightful three-bedroom home is perfect for families, first-time buyers, or savvy investors. Set on a generous 640m² block, it offers comfort, convenience, and room to move.

Step inside to discover a separate lounge with vaulted ceilings and stylish half walls, creating a sense of space and character. The master bedroom features a walk-in robe and direct access to the two-way bathroom, complete with a ceiling fan for added comfort. The well-appointed kitchen boasts a gas cooktop, under-bench oven, walk-in pantry, and a spacious breakfast bar, overlooking the open-plan dining and sunlit family area.

Enjoy year-round comfort with a split-system reverse cycle air conditioner, while neutral décor throughout provides a fresh and inviting ambiance. Outside, a large paved patio is perfect for entertaining, complemented by low-maintenance yards and a handy tool shed.



Disclaimer: All information contained therein is gathered from relevant third parties sources. We cannot guarantee or give any warranty about the information provided. Interested parties must rely solely on their own enquiries.



For Sale
Please Call

View
ljhooker.com.au/66ZTFDC

Contact
Andrew Rose
0421 988 597
andrew.rose@ljhces.com.au

LJ Hooker Craigmore | Elizabeth | Salisbury
(08) 8255 9555

The double carport, under the main roof, includes an automatic roller door for secure parking.

Key Features:

- Spacious 640smq Allotment (Approx.)
- Wide 20m frontage
- Heating and Cooling
- Formal Lounge room
- Great size backyard

Specifications:

CT / 5909/594

Council / Playford

Built / 2005

Easements / Subject to service easements over the land marked D for Drainage purposes to the council for the area (223LG RPA)

Estimated rental assessment / \$500-\$520 per week

Perfectly positioned for convenience, this home is just moments from the train station, making the daily commute to the city effortless. Munno Para Shopping City is also close by, offering a fantastic selection of shops, restaurants, gyms, medical facilities, and more. Families will appreciate the proximity to quality schooling options, including Elizabeth North Primary School, ensuring easy access to education for the little ones.

Move straight in and start making memories, or lease it out and enjoy the rewards-this fantastic home is ready for you!

Disclaimer:

We have in preparing this document used our best endeavours to ensure the information contained is true and accurate, but accept no responsibility and disclaim all liability in respect to any errors, omissions, inaccuracies or misstatements contained. Prospective purchasers should make their own enquiries to verify the information contained in this document.

RLA155355

More About this Property

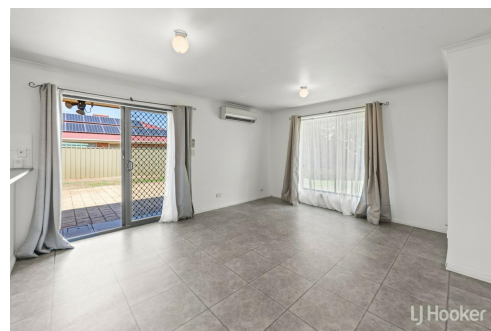
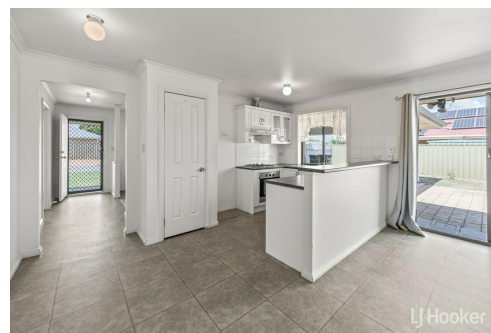
Property ID	66ZTFDC
Property Type	House

Andrew Rose 0421 988 597

Senior Sales Representative | andrew.rose@ljhces.com.au

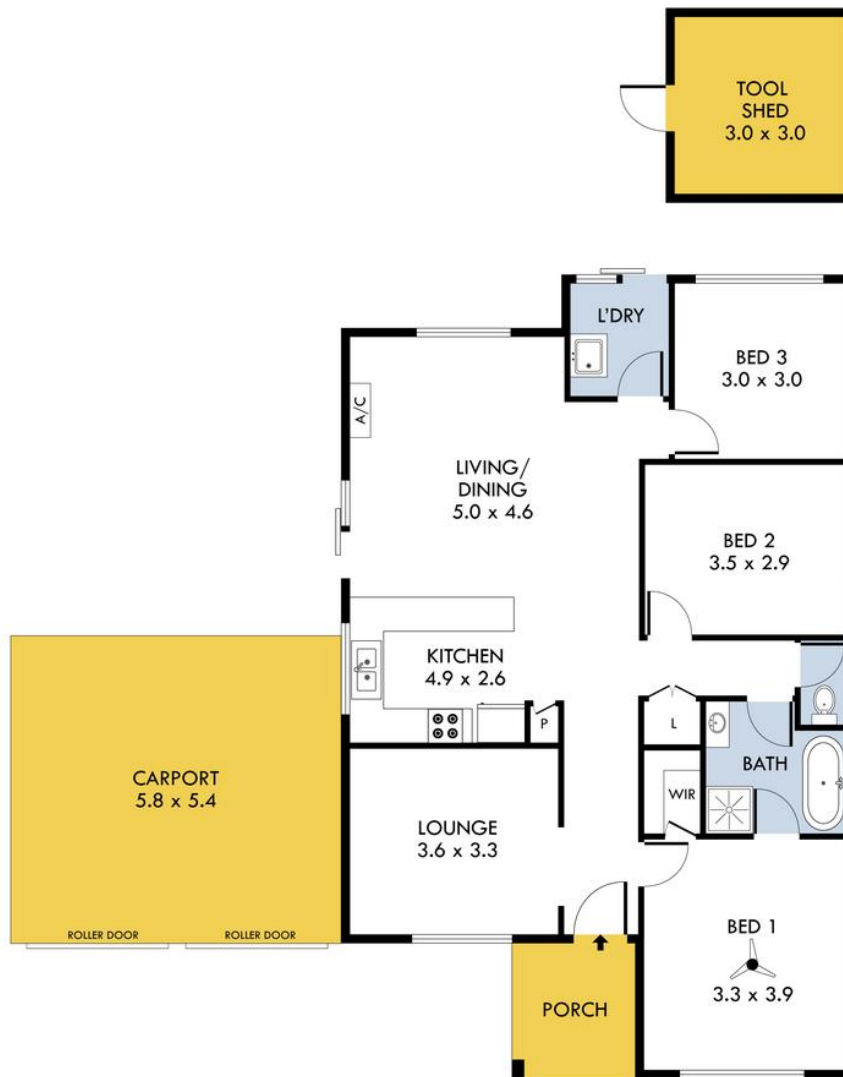
LJ Hooker Craigmores | Elizabeth | Salisbury (08) 8255 9555

Shop 17, Craigmores Village, Yorktown Road, CRAIGMORE SA 5114
craigmoreselizabeth.ljhooker.com.au | Office@ljhces.com.au



Disclaimer: All information contained therein is gathered from relevant third parties sources. We cannot guarantee or give any warranty about the information provided. Interested parties must rely solely on their own enquiries.

**LJ Hooker Craigmores | Elizabeth |
Salisbury
(08) 8255 9555**



25 Dartmouth Street, Davoren Park

INTERNAL - 104.0 SQM
EXTERNAL - 37.3 SQM
TOTAL - 141.3 SQM

Please Note: Every care has been taken to verify the correctness of the areas and details used in this leaflet. No warranty or representation is given or made as to the correctness of the information supplied and neither the owners, illustrator nor the Agent accept responsibility for errors or omissions. The sketch is for illustration purposes only and intending purchasers should satisfy themselves independently regarding sizes, layout and location of the property. Please check with local council that all structures are approved by council.