

Davoren Park, 14 Pilsdon Street

A Solid Investment or Wonderful First Home!

This character stone-fronted, 3 bedroom home is situated on a sizeable block of approx. 640m² and is walking distance to nearby Drakes Shopping Centre and specialty outlets, Kalara Reserve and Andrews Farm Cricket Club at the end of the street. With lots of development occurring around the area and bordering new home estate Andrews Farm, this is an opportunity to get into the housing market or add to your property portfolio.

Features Include:

- * 21.94m frontage (approx.)
- * 3 Bedrooms
- * Open plan family and meals
- * Kitchen with ample bench space, gas cooktop, oven and rangehood
- * Split air conditioning wall unit in living room
- * Undercover outdoor entertaining overlooking large backyard
- * Garage/shed in backyard offering space for a vehicle or ideal for home workshop



For Sale
\$449,000 - \$489,000

View
ljhooker.com.au/2AVXGJU

Contact
Shaun Roberts
0435 367 534
shaunr@ljhsales.com.au



Disclaimer: All information contained therein is gathered from relevant third parties sources. We cannot guarantee or give any warranty about the information provided. Interested parties must rely solely on their own enquiries.

**LJ Hooker Greenwith | Golden Grove
| Mawson Lakes | Modbury
(08) 8289 6660**

* Side carport with space for a couple of vehicles parked head to tail

Easy access to North/South Expressway via Womma Road or Curtis Road, making commuting to the Adelaide CBD a breeze. Enquire today to avoid disappointment.

All information provided has been obtained from sources we believe to be accurate, however, we cannot guarantee the information is accurate and we accept no liability for any errors or omissions (including but not limited to a property's land size, floor plans and size, building age and condition). Interested parties should make their own enquiries and obtain their own legal and financial advice. Should this property be scheduled for auction, the Vendor's Statement may be inspected at either of our two LJ Hooker Property Specialists Real Estate offices for 3 consecutive business days immediately preceding the auction and at the auction for 30 minutes before it starts.

RLA 208516

More About this Property

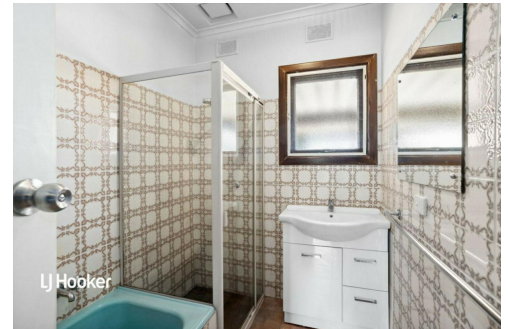
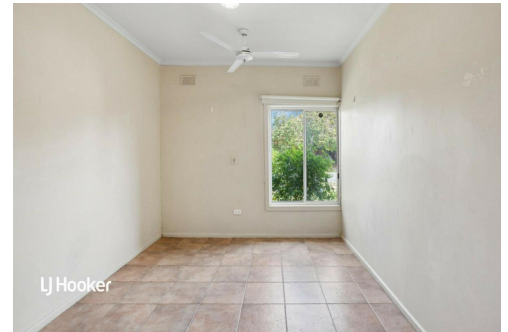
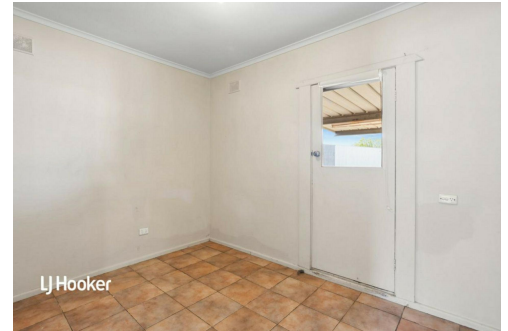
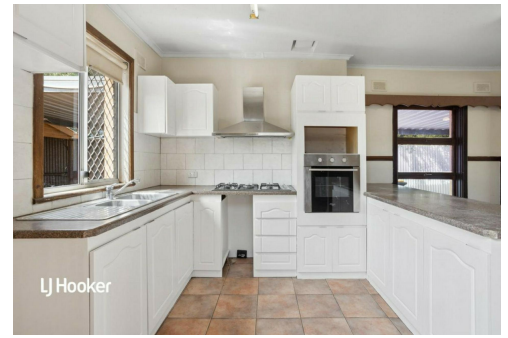
Property ID	2AVXGJU
Property Type	House
House Size	99 m ²
Land Area	640 m ²
Including	Secure Parking Fully Fenced

Shaun Roberts 0435 367 534

Managing Partner | Sales Specialist | shaunr@ljhsales.com.au

LJ Hooker Greenwith | Golden Grove | Mawson Lakes | Modbury (08) 8289 6660

North East, Shop 2, 1007 North East Road, RIDGEHAVEN SA 5097
greenwithgoldengrove.ljhooker.com.au | info@ljhsupport.com.au



Disclaimer: All information contained therein is gathered from relevant third parties sources. We cannot guarantee or give any warranty about the information provided. Interested parties must rely solely on their own enquiries.

**LJ Hooker Greenwith | Golden Grove
| Mawson Lakes | Modbury
(08) 8289 6660**



PILSDON STREET

SITE PLAN
(NOT TO SCALE)

Scale in metres. This drawing is for illustration purposes only. All measurements are approximate and details intended to be relied upon should be independently verified.

Produced by The Fotobase Group



LJ Hooker Greenwith | Golden Grove
| Mawson Lakes | Modbury
(08) 8289 6660

Disclaimer: All information contained therein is gathered from relevant third parties sources. We cannot guarantee or give any warranty about the information provided. Interested parties must rely solely on their own enquiries.