



Davoren Park, 13 Winkfield Street

Modern Comfort with Endless Potential

Best Offer By Tuesday 27th of May at 12pm

Set on a generous 590sqm (approx.) block, this well-maintained three bedroom home offers the perfect blend of comfort, space and functionality. With updated interiors and expansive outdoor features, it's ideal for first home buyers or investors looking for a good, versatile property with long-term appeal.

At the heart of the home is the light filled open plan kitchen and dining area, thoughtfully updated with a 4-burner electric cooktop, Westinghouse oven, ample cupboard space and a split system air conditioner for year round comfort. It's a welcoming hub for daily living and casual entertaining alike.

Accommodation includes three well sized bedrooms, with the main bedroom including a ceiling fan. The spacious lounge is fitted with a ceiling fan and a split system air



For Sale
Contact Agent

View
ljhooker.com.au/WPNFDG

Contact
Julian Rullo
0407846417
julian.rullo@ljhadelaidemetro.com.au



LJ Hooker Glynde
(08) 8336 3899

Disclaimer: All information contained therein is gathered from relevant third parties sources. We cannot guarantee or give any warranty about the information provided. Interested parties must rely solely on their own enquiries.

conditioner, creating a comfortable living zone for the whole family to enjoy.

Step outside to an inviting covered alfresco area overlooking a large, clean cut lawn- perfect for weekend gatherings, family barbecues or simply soaking up the sunshine. A standout feature is the large shed with an in-built mechanic's pit, ideal for car enthusiasts, hobbyists or extra storage needs. The long driveway comfortably fits three to four vehicles off-street.

What you'll love:

- Updated kitchen with Westinghouse appliances
- Two split system air conditioners
- Evaporative air-conditioning
- Covered outdoor entertaining area
- Large shed with mechanic's pit
- Neat, family friendly backyard with beautiful lawn
- Full under-lawn irrigation system
- Ceiling fans and practical layout
- Fireplace in lounge
- Currently tenanted-great for investors

With its generous land size, thoughtful updates, and excellent location near shops, schools, parks and public transport, this charming home is a standout opportunity you won't want to miss.

Purchasing this property as an investment? Talk with Kirsty Clark from our PM team and see why our Property Management department is #1 amongst all the LJ Hooker offices Worldwide.

** All information provided has been obtained from sources we believe to be accurate, however, we cannot guarantee the information is accurate and we accept no liability for any errors or omissions (including but not limited to a property's land size, floor plans and size, building age and condition). Interested parties should make their own enquiries and obtain their own legal advice.

RLA 61345 RLA 282965 RLA 231015

More About this Property

Property ID	WPNFDG
Property Type	DuplexSemi-detached
Land Area	590 m2
Including	Air Conditioning Toilets (1)

Julian Rullo 0407846417

Sales Consultant | julian.rullo@ljhadelaidemetro.com.au

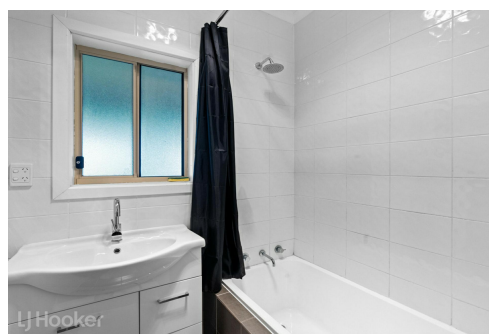
LJ Hooker Glynde (08) 8336 3899

2a Portrush Road, PAYNEHAM SA 5070

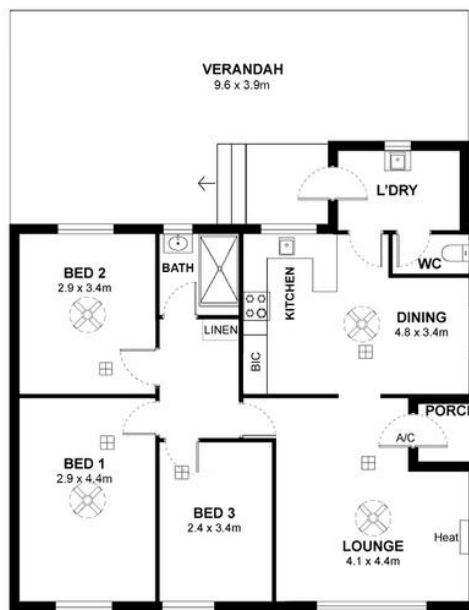
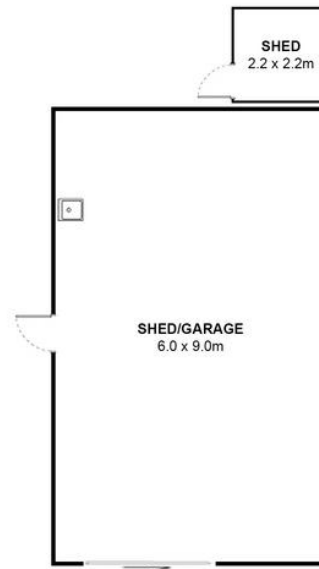
glynde.ljhooker.com.au | stpeters@ljhadelaidemetro.com.au



Disclaimer: All information contained therein is gathered from relevant third parties sources. We cannot guarantee or give any warranty about the information provided. Interested parties must rely solely on their own enquiries.



**LJ Hooker Glynde
(08) 8336 3899**



13 Winkfield Street, Davoren Park SA 5113

Disclaimer: The information & figures obtained within this document has been compiled from information provided by vendor & sources that we believe are reliable. No warranty is given to their accuracy & all figures are subject to change without notice.