

Darwin City, 350/19B Kitchener Drive

Breathtaking Waterfront Living PRICE REDUCTION!

Welcome to an unparalleled lifestyle at Darwin Waterfront, where modern sophistication meets natural beauty. This stunning 2-bedroom, 2-bathroom apartment is a rare opportunity to secure your slice of paradise in one of Darwin's most sought-after locations.

Key Features:

- Two Spacious Bedrooms: Each designed for comfort and privacy, with ample natural light and contemporary finishes.
 - Two Bathrooms: Including a sleek, well-appointed ensuite for your convenience.
 - Two Secure Car Parks: Ensuring peace of mind in this vibrant location.
- Panoramic Views: Immerse yourself in spectacular vistas over the sparkling waterfront — a true visual feast, day and night.

Lifestyle Benefits:



Disclaimer: All information contained therein is gathered from relevant third parties sources. We cannot guarantee or give any warranty about the information provided. Interested parties must rely solely on their own enquiries.

SOLD

2

2

2

For Sale
\$850,000

View
ljhooker.com.au/5CV1F2X

Contact
Rory Turner
0451 600 030
rturner@ljhookerdarwin.com.au

Riley Loy
0422 729 288
rloy@ljhookerdarwin.com.au

LJ Hooker Darwin
(08) 8924 0900

- Prime Location: Situated in the heart of Darwin Waterfront, surrounded by premium dining, boutique shopping, and entertainment options.
- Resort-Style Living: Enjoy access to lush parklands, swimming lagoons, and waterfront promenades right at your doorstep.
- Modern Elegance: An open-plan layout with stylish finishes and seamless indoor-outdoor flow.

Whether you're savoring morning coffee on the balcony, entertaining guests against a backdrop of stunning sunsets, or embracing the vibrant waterfront lifestyle, this apartment offers it all.

Don't Miss Out

Properties of this calibre in such an iconic location are highly sought after. Contact us today to arrange a private viewing and experience the beauty and luxury of 350/19 Kitchener Drive for yourself.

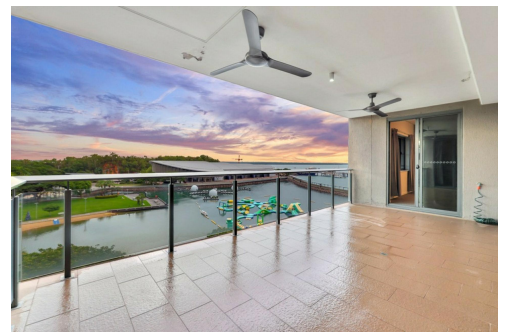
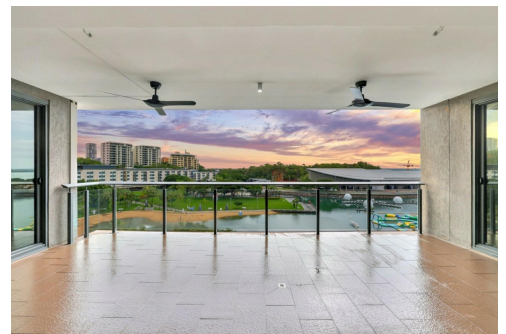
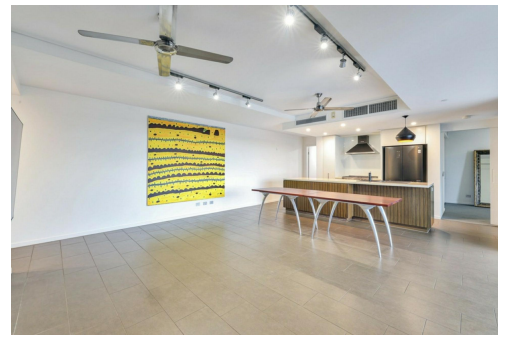
Contact: Rory Turner | LJ Hooker Darwin | 0451 600 030
 Rturner@ljhookerdarwin.com.au

More About this Property

Property ID	5CV1F2X
Property Type	Unit
Land Area	130 m2
Including	Air Conditioning Ducted Cooling Liveability

Rory Turner 0451 600 030
 Sales Representative | rturner@ljhookerdarwin.com.au
Riley Loy 0422 729 288
 Sales Representative | rloy@ljhookerdarwin.com.au

LJ Hooker Darwin (08) 8924 0900
 Shop 1/25 Parap Road, PARAP NT 0820
 darwin.ljhooker.com.au | reception@ljhookerdarwin.com.au



LJ Hooker Darwin
(08) 8924 0900

Disclaimer: All information contained therein is gathered from relevant third parties sources. We cannot guarantee or give any warranty about the information provided. Interested parties must rely solely on their own enquiries.



Scales in metres, indicative only. Dimensions are approximate. All information contained herein is gathered from sources we believe to be reliable. However we cannot guarantee its accuracy and interested persons should rely on their own enquiries.

350/19 Kitchener Drive, Darwin City, NT 0800