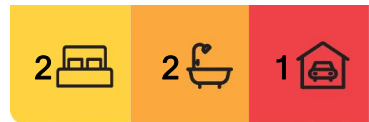


Darwin City, 1104/24 Litchfield Street

Enjoy the city high life

Situated in the heart of the Darwin CBD, this apartment provides the ultimate city lifestyle. Imagine being just a short walk from cafe's, restaurants and entertainment venues. What if you worked in the city as well? Leave your car at home during the dry and enjoy the walk to work and save yourself some fuel at the same time. The new Charles Darwin University campus is just a few footsteps from the front door of this complex making the location super convenient. This complex is attached to the Mantra Pandanus building and as such residents have access to the hotel pool and gym for that added lifestyle bonus.

The apartment is well finished with thick stone bench tops and a built in Microwave nook in the kitchen. The kitchen is loaded with draws and comes complete with a dishwasher and lots of bench space. Designed with comfort in mind, the oversized master bedroom comes complete with a walk in robe and ensuite to provide maximum indulgence. The balcony has views over the city towards Cullen Bay and captures the beautiful Top End sunsets.



For Sale
\$429,000

View
ljhooker.com.au/5D4CF2X

Contact
Jennifer Wardell
0447 007 474
jwardell@ljhookerdarwin.com.au

Robert Higgins
0418 184 754
rhiggins@ljhookerdarwin.com.au



LJ Hooker Darwin
(08) 8924 0900

Disclaimer: All information contained therein is gathered from relevant third parties sources. We cannot guarantee or give any warranty about the information provided. Interested parties must rely solely on their own enquiries.

Features include:

- * High level of finish throughout
- * Fully air conditioned
- * Tiled living areas and carpeted bedrooms
- * Walk in robe and ensuite off the Master bedroom
- * Access to the adjoining Hotel pool and spa
- * A short walking distance to most of the CBD
- * Close proximity to the new CDU campus

This quality property can provide you with an enviable city lifestyle at a very affordable price. This is a secure building with great amenity and a fabulous location that is very central and hard to beat. Whether it is cutting commute times to work, or laying around the pool, this property is well worth the inspection.

Year Built: 2008

Area under title: 132m²

Planning Zone: CB - Central business

Council Rates: \$1750 per year (approx)

Body Corporate Manager: Whittles

Body Corp Fees: \$2612 per quarter

Easements: Nil on title

Status: Available now!

More About this Property

Property ID	5D4CF2X
Property Type	Apartment
House Size	132 m2
Including	Ensuite Balcony Gym Dishwasher Built-in-Robes Remote Garage

Jennifer Wardell 0447 007 474

Sales Representative | jwardell@ljhookerdarwin.com.au

Robert Higgins 0418 184 754

Project Planning and Marketing | rhiggins@ljhookerdarwin.com.au

LJ Hooker Darwin (08) 8924 0900

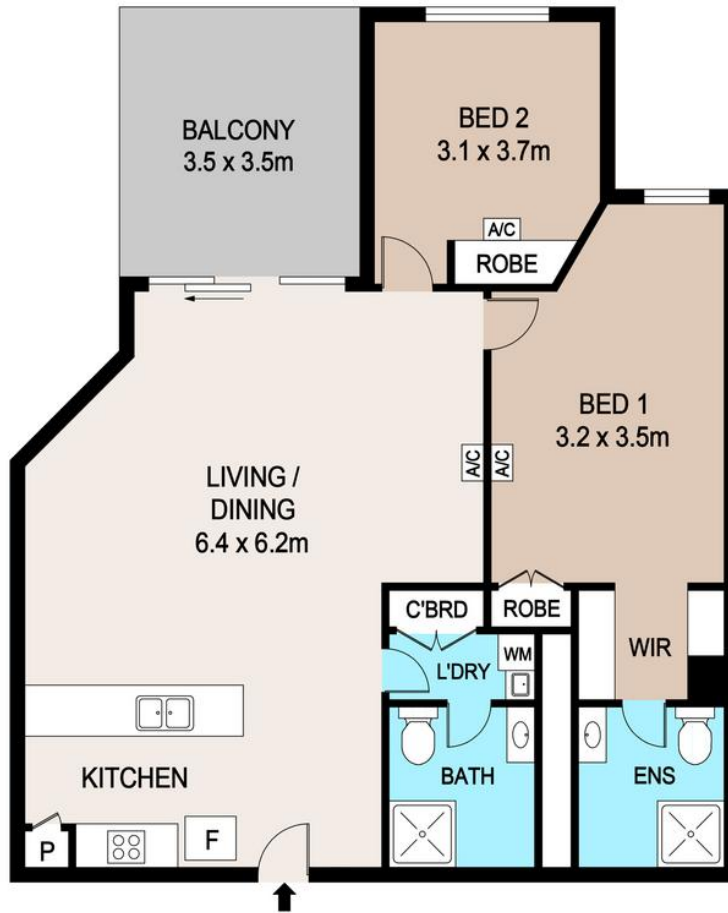
Shop 1/25 Parap Road, PARAP NT 0820

darwin.ljhooker.com.au | reception@ljhookerdarwin.com.au



**LJ Hooker Darwin
(08) 8924 0900**

Disclaimer: All information contained therein is gathered from relevant third parties sources. We cannot guarantee or give any warranty about the information provided. Interested parties must rely solely on their own enquiries.



1104/24 LITCHFIELD STREET, DARWIN

DISCLAIMER

PLANS SHOWN ARE FOR MARKETING PURPOSES ONLY. ALL DIMENSIONS ARE APPROXIMATE AND NOT TO SCALE. THEY ARE SUBJECT TO ERRORS AND INACCURACIES AND NO LIABILITY WILL BE ACCEPTED. INTERESTED PARTIES SHOULD MAKE THEIR OWN INQUIRIES.