

260 Swans Road, Darley

Timeless Masterpiece In An Iconic Location!!


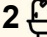
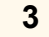
260 Swans Road, Darley

Discover a rare blend of rural serenity and modern luxury at this exceptional estate, set across a stunning 52.9-acre parcel in the heart of Darley. From the moment you arrive, the grandeur of the home is evident-welcomed by a circular driveway enhanced with a central water feature, setting the tone for what lies beyond.

This meticulously designed double-storey residence boasts 5 generous bedrooms, 2 bathrooms, a 3-car garage, and multiple living zones, ideal for large families or those seeking space and flexibility. A dedicated study adds functionality for professionals or students alike.

Inside, high ceilings and feature lighting elevate the sense of space and sophistication. Comfort is guaranteed year-round with 6 split systems, ducted heating, and a gas fireplace. The thoughtfully zoned living areas are perfect for entertaining or quiet family time.

At the heart of the home lies the stylish kitchen, appointed with durable stainless steel benchtops, a 900mm gas cooktop, and a walk-in pantry, making everyday cooking and large gatherings a breeze.

5  2  3 

FOR SALE

\$1,499,000 - \$1,648,000

AGENTS

Vinay Kumar

0415 316 382

vinay.kumar@ljhookerbm.com.au

AGENCY

LJ Hooker Melton

(03) 8797 5588

All information contained therein is gathered from relevant third parties sources. We cannot guarantee or give any warranty about the information provided. Interested parties must rely solely on their own enquiries.

 **LJ Hooker**

The master suite is a true retreat, offering uninterrupted 180-degree views of Bacchus Marsh, a spacious walk-in robe, and a luxurious ensuite featuring a spa bath and double vanity. The additional four bedrooms, all with built-in robes, are serviced by a central bathroom with its own spa bath and extended shower.

Step outside and enjoy the ultimate outdoor lifestyle. A massive verandah frames the back of the home, offering panoramic views and the perfect space for entertaining or unwinding. The landscaped gardens, multiple sheds, and a workshop make this property ideal for hobbyists, tradespeople, or those with rural interests.

Access is seamless with a side gate for additional vehicles, trailers, or machinery. Every corner of this property has been thoughtfully crafted to balance charm, functionality, and timeless appeal-including a character-filled staircase that gracefully connects the two levels.

Key Features:

52.9 acres of land offering potential and incredible views

5 bedrooms + study, 2 bathrooms

Multiple living areas over two spacious levels

High ceilings, feature lighting, and classic timber staircase

Master with panoramic views, spa ensuite & walk-in robe

Central kitchen with stainless steel benchtops, 900mm gas cooktop & walk-in pantry

6 split systems, ducted heating & gas fireplace

- car garage + side access gate

Landscaped gardens, extensive verandah, sheds & workshop

Circular driveway with elegant water feature

This is more than a home-it's a lifestyle estate, offering peace, privacy, and luxury just moments from Bacchus Marsh township, local schools, shopping, and freeway access. Properties of this calibre are rarely offered-secure your private inspection today and experience the magic of 260 Swans Road, Darley.

(PHOTO ID REQUIRED AT OPEN FOR INSPECTION)

Contact us today!

Lj Hooker TEAM welcomes you and looks forward to meeting you at the inspections.

DISCLAIMER: All stated dimensions are approximate only. Particulars given are for general information only and do not constitute any representation on the part of the vendor or agent.

Please see the below link for an up-to-date copy of the Due Diligence Checklist:

<http://www.consumer.vic.gov.au/duediligencechecklist>

MORE DETAILS

Property ID RUFHWU
Property Type House
Land Area 214300 m2
Including Toilets (3)

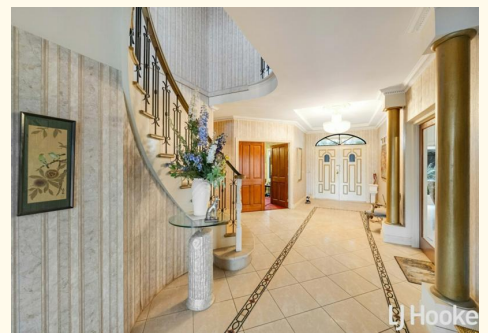
Vinay Kumar 0415 316 382

Sales Executive | vinay.kumar@ljhookerbm.com.au

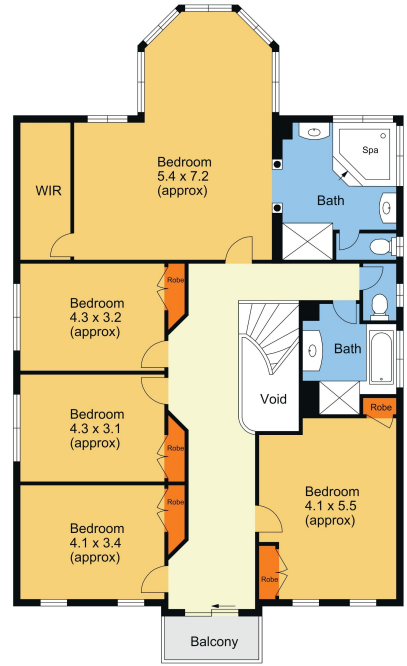
LJ Hooker Melton (03) 8797 5588

307 High Street, MELTON VIC 3337

melton.ljhooker.com.au | admin@ljhmelton.com.au



All information contained therein is gathered from relevant third parties sources.
We cannot guarantee or give any warranty about the information provided.
Interested parties must rely solely on their own enquiries.



260 Swans Road Darley VIC

The site plan and floor plan are not to scale. Measurements are indicative and in metres. Bushes and trees are place for illustration purposes. Plans should not be relied on. Interested parties should make and rely on their own enquiries.

