

Dardanup, 8 Rosevale Close

Charming 4-Bedroom Family Home with Workshop and Outdoor Oasis

Discover this beautifully updated 4-bedroom, 2-bathroom residence, perfectly positioned on a generous 641sqm lot within the quiet townsite of Dardanup. Offering the perfect blend of modern living, functionality, and outdoor space. Inside, the home has been freshly updated with brand-new floor coverings and freshly painted walls, creating a bright and contemporary feel throughout.

The open-plan living area serves as the heart of the home, complete with split-system air conditioning for year-round comfort. The master bedroom also boasts its own split-system air conditioning, ensuring a peaceful and comfortable retreat.

The kitchen features an island benchtop with breakfast bar, perfect for the family to converse about their plans for the day in the morning or even snack whilst making dinner in the evening. Complete with under bench oven and gas cooktop.



For Sale
Offers Over \$649,000

View
ljhooker.com.au/16YGHND

Contact
Simon Bushell
0411 929 198
simon.bushell@ljsouthwest.com.au



LJ Hooker Property South West WA
(08) 9791 6880

Disclaimer: All information contained therein is gathered from relevant third parties sources. We cannot guarantee or give any warranty about the information provided. Interested parties must rely solely on their own enquiries.

The bedrooms are generously sized, providing ample space for family, guests, or a home office setup, each featuring built in robes and a walk-in robe to the main bedroom.

The outdoor living area is a true highlight, featuring liquid limestone paving and plenty of room for entertaining, relaxing, or enjoying alfresco dining. For those who love to tinker or need extra storage, the property includes a massive 9m x 6m powered workshop with epoxy painted floors and wall lining, it double as a detached games room or is perfect for storing tools, vehicles, or even a boat with the with convenient side access.

Energy efficiency is catered for, thanks to a solar power system that reduces energy costs while offering an eco-friendly lifestyle. The roller shutters on all of the bedroom windows adds a level of security whilst also reducing heating and cooling costs.

Additional outdoor features include a side patio and a spacious backyard, providing room for kids to play, pets to roam, or future landscaping projects.

Conveniently located near local public and private public schools, parks, general store, pub and bakery, this home is ideal for families, downsizers or anyone seeking a move-in-ready property with plenty of space inside and out. With its combination of modern updates, practical features, and a fantastic location, this residence is a rare find.

With school bus services available to secondary schools and the newly opened Wilman-Widandi Highway located north of Dardanup, access to Bunbury/Busselton or even Perth just got a whole lot easier.

Don't Miss Out!

Opportunities like this don't come along often. Arrange a private viewing today and see for yourself why this home is the perfect choice for your next chapter!

Contact Simon Bushell for further information and to arrange a viewing on 0411 929 198.

Disclaimer —whilst every care has been taken in the preparation of this advertisement and the approximate outgoings, all information supplied by the seller and the sellers agent is provided in good faith. Prospective purchasers are encouraged to make their own enquiries to satisfy themselves on all pertinent matters. Images are for illustrative purposes.



LJ Hooker Property South West WA
(08) 9791 6880

Disclaimer: All information contained therein is gathered from relevant third parties sources. We cannot guarantee or give any warranty about the information provided. Interested parties must rely solely on their own enquiries.

More About this Property

Property ID	16YGHND
Property Type	House
House Size	133 m2
Land Area	641 m2

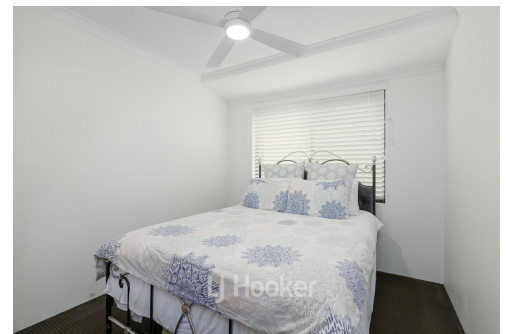
Simon Bushell 0411 929 198

Sales Consultant | simon.bushell@ljhsouthwest.com.au

LJ Hooker Property South West WA (08) 9791 6880

130 Victoria Street, BUNBURY WA 6230

southwestwa.ljhooker.com.au | bunbury@ljhsouthwest.com.au



**LJ Hooker Property South West WA
(08) 9791 6880**

Disclaimer: All information contained therein is gathered from relevant third parties sources. We cannot guarantee or give any warranty about the information provided. Interested parties must rely solely on their own enquiries.

8 Rosevale Place, Dardanup

This floor plan including furniture, fixture measurements and dimensions are approximate and for illustrative purposes only. LJ Hooker gives no guarantee, warranty or representation as to the accuracy and layout. All enquiries must be directed to the agent, vendor or party representing this floor plan.



FLOOR PLAN



LJ Hooker Property South West WA
(08) 9791 6880

Disclaimer: All information contained therein is gathered from relevant third parties sources. We cannot guarantee or give any warranty about the information provided. Interested parties must rely solely on their own enquiries.