

32 Cunningham Terrace, Daglish

BLOCK OF 8 UNITS

Fully Leased
Bluechip Location
Expression of Interest

Zoned R100 - City of Subiaco.

Situated a 764m2 block featuring an array of eight units. This exclusive arrangement includes four ground floor units and four first floor units. Each highlighting a lounge, 1 bedroom with wardrobe, kitchen/meals with gas cooking and bathroom all currently leased.

The 8 units are under lease with some having Rent Reviews within next 3 months.

As of June 2024, the rent will be approx \$150,000 per annum.

All the units have different Lease expiry dates.

This property is strategically positioned, offering a picturesque view of the revered Cliff Sadlier VC Memorial Park. Additionally, it boasts convenient access to local amenities, including Daglish train station and proximity to restaurants, and shops in Subiaco. The units themselves feature one parking bay, access to a communal laundry.

8 🏠 8 🚿 0 🚗

FOR SALE

Please Call

AGENTS

Dahlia Rechichi
0418 920 742
dahlia.rechichi@ljhooker.com.au

AGENCY

LJ Hooker Harrisdale
(08) 9398 4000

All information contained therein is gathered from relevant third parties sources.
We cannot guarantee or give any warranty about the information provided.
Interested parties must rely solely on their own enquiries.



DISCLAIMER: The information contained herein has been supplied to us and we have no reason to doubt its accuracy, however we cannot guarantee it. Accordingly, all interested parties should make their own enquires to verify the information.

MORE DETAILS

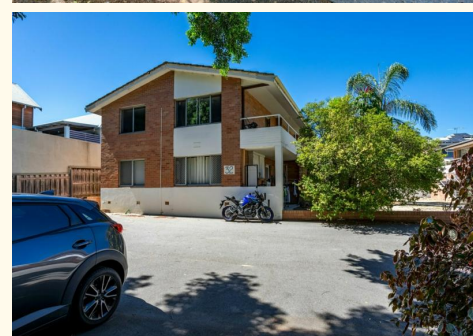
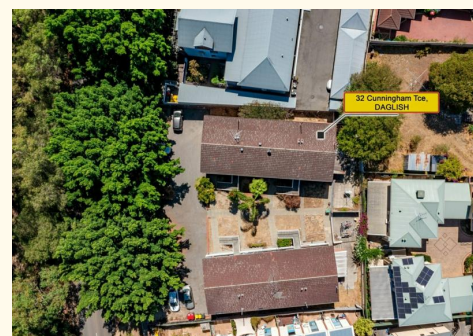
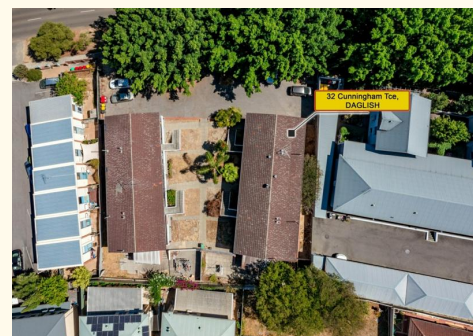
Property ID	16BJ00
Property Type	Unit
Land Area	764 m2

Dahlia Rechichi 0418 920 742

Director | dahlia.rechichi@ljhooker.com.au

LJ Hooker Harrisdale (08) 9398 4000

21 Wright Road, HARRISDALE WA 6112
harrisdale.ljhooker.com.au | harrisdale@ljhooker.com.au



All information contained therein is gathered from relevant third parties sources.
We cannot guarantee or give any warranty about the information provided.
Interested parties must rely solely on their own enquiries.