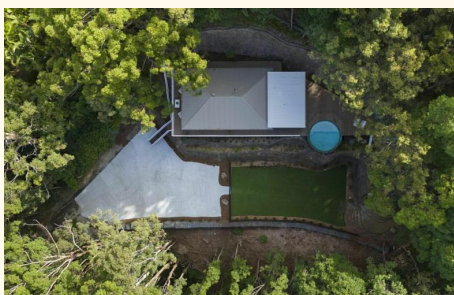




Sold



206 Tierney Drive, Currumbin Waters

SOLD BY LUKE PETERS

Privately positioned at the very end of a tightly held cul-de-sac is a breathtaking treetop sanctuary that feels worlds away from the everyday. Suspended among lush rainforest surrounds and wrapped in total privacy, this one-of-a-kind 'treehouse' residence delivers the magic of a secluded nature retreat with the flawless finish and precision of a near-new luxury build. Every inch of this home has been thoughtfully designed to maximise space, flow and functionality for family living, while embracing the serenity and beauty of its extraordinary setting - all while being just minutes from beaches, shopping and everyday conveniences!

Crafted for families seeking a true turnkey lifestyle, the home features a stunning 360-degree wraparound balcony, creating complete privacy and a seamless connection between indoor and outdoor living zones. The open-plan living and dining area has been designed as the heart of the home, offering generous proportions for family gatherings while maintaining effortless flow to the outdoor entertaining deck. The designer kitchen overlooks the living zones and connects directly to the outdoor breakfast bar, making everyday meals and weekend entertaining effortless. From here, the home opens out to the showstopping infinity-style swimming pool, perched dramatically along the cliff edge and immersed in a leafy canopy outlook that feels like your own private rainforest resort.

3 2 4

FOR SALE
Expressions of Interest

AGENTS
Luke Peters
0414 288 947
luke@ljhookersgc.com.au

AGENCY
LJ Hooker Southern Gold Coast
(07) 5534 4033

All information contained therein is gathered from relevant third parties sources. We cannot guarantee or give any warranty about the information provided. Interested parties must rely solely on their own enquiries.



A rare and highly valuable feature of this elevated block is the expansive, flat green space positioned below the pool. Fully fenced and secure, this level space creates the perfect environment for children to play freely, pets to roam safely, or families to host outdoor gatherings, backyard cricket, soccer matches or casual tennis sessions. This practical outdoor space transforms the property from a luxury retreat into a truly functional family home, offering versatility that is almost unheard of in homes of this elevation and aspect.

Internally, the home has been meticulously renovated from floor to ceiling with a focus on quality, durability and timeless design. Premium finishes, carefully selected materials and thoughtful design choices ensure the home is both visually striking and highly liveable for families. Ducted air-conditioning throughout provides year-round comfort, while the flowing floor plan allows families to come together or retreat into private spaces with ease.

The residence comprises three beautifully appointed bedrooms, each designed to offer comfort, privacy and connection to the surrounding environment. The master retreat and second bedroom feature bi-fold doors that open directly onto the wraparound deck, allowing natural breezes, leafy outlooks and effortless indoor-outdoor living to become part of everyday life. The master ensuite is a luxurious sanctuary in itself, complete with quality finishes, recessed shelving and an elegant rainfall shower. The main bathroom and laundry continue the homes refined aesthetic, blending practicality with timeless design for effortless family living.

A rare and highly practical feature of this property is the oversized driveway, offering exceptional off-street parking capacity for multiple vehicles. Whether you have a growing family, boats, trailers, guests, or simply value having ample space, this expansive driveway provides outstanding flexibility rarely found in homes of this calibre and setting. The generous turning area and easy access make day-to-day living effortless, while maintaining the privacy and exclusivity of a true cul-de-sac position.

Set on just shy of two acres of breath-taking rainforest, this extraordinary property offers a level of space, privacy and natural beauty that is almost impossible to find this close to the coast. Wrapped in lush, established greenery, the home feels completely secluded, creating the rare sense of owning your own private nature reserve. The expansive landholding enhances the treehouse-style design, delivering uninterrupted leafy outlooks in every direction and an atmosphere of total tranquillity.

Despite its secluded, resort-like feel, this home is exceptionally positioned only minutes from pristine beaches, major shopping precincts, popular cafés and local schooling options, offering the perfect balance of privacy, lifestyle and convenience. A true treetop masterpiece that must be experienced to be believed!

Rental Appraisal: Approx. \$1,200 p/w - \$1,250 p/w

- End of cul-de-sac position offering complete privacy & tranquillity
- One-of-a-kind treetop 'treehouse' sanctuary surrounded by rainforest
- Positioned on just shy of two acres of stunning, private rainforest surrounds
- Flawlessly renovated to near-new build quality - true turnkey living
- Thoughtfully designed family-friendly layout with seamless indoor-outdoor flow
- " Spectacular 360° wraparound balcony creating total privacy
- Light-filled open-plan living & dining designed for relaxed family living

- Designer kitchen with breakfast serving bar to the outdoor deck
- Show-stopping entertainer's deck flowing to infinity-style pool on the cliff edge
- Jaw-dropping leafy outlooks - feels like your own private rainforest retreat
- Stunning pebble steps connecting deck & pool area to the levelled greenspace below
- Rare flat, fully fenced artificial lawn on an elevated block - perfect for kids & pets
- Ideal space for backyard cricket, soccer or casual tennis
- Three beautifully appointed bedrooms with ducted air-conditioning throughout
- Master retreat with luxe ensuite, rainfall shower & premium finishes
- Bi-fold doors from master & second bedroom opening to wraparound deck
- Timeless main bathroom & quality-designed laundry
- Oversized driveway with capacity for multiple vehicles, guests, boat or trailers
- Peaceful cul-de-sac setting with easy access & generous turning space
- Only minutes to beaches, shopping, cafés & everyday conveniences
- Ultra-rare combination of luxury, privacy, views & functional family space
- A true treetop masterpiece - unlike anything else on the market

Disclaimer:

All information (including but not limited to the property area, floor size, price, address and general property description) is provided as a convenience to you, and has been provided to LJ Hooker by third parties. LJ Hooker is unable to definitively confirm whether the information listed is correct or 100% accurate. LJ Hooker does not accept any liability (direct or indirect) for any injury, loss, claim, damage or any incidental or consequential damages, including but not limited to lost profits or savings, arising out of or in any way connected with the use of any information, or any error, omission or defect in the information, contained on the Website. Information contained on the Website should not be relied upon and you should make your own enquiries and seek legal advice in respect of any property on the Website. Prices displayed on the Website are current at the time of issue, but may change.

MORE DETAILS

Property ID	1W8CF47
Property Type	House
House Size	130 m2
Land Area Including	7379 m2
	Air Conditioning
	Ducted Cooling
	Ducted Heating
	Pool
	Tennis Court
	Balcony
	Dishwasher
	Outdoor Entertaining
	Built-in-Robes
	Secure Parking
	Liveability

Luke Peters 0414 288 947

Sales & Marketing Specialist | luke@ljhookersgc.com.au

LJ Hooker Southern Gold Coast (07) 5534 4033

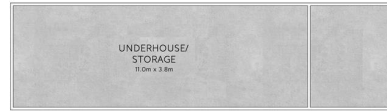
Shop 2, 10 Fifth Avenue, PALM BEACH QLD 4221
southerngoldcoast.ljhooker.com.au | enquiries@ljhookersgc.com.au



NORTH



SITE PLAN



LOWER LEVEL



UPPER LEVEL

LJ Hooker
Southern Gold Coast

Luke Peters
0414 288 947

206 Tierney Drive
Currumbin Waters

3

2

4

Internal: 89m²
Covered External: 41m²
Total Floor Area: 130m²
Total Land Area: 7,379m²

felt
IMAGERY

This plan is for illustrative purposes only.
Any information provided should not be relied upon solely.
www.feltimagery.com.au

LJ Hooker

All information contained therein is gathered from relevant third parties sources.
We cannot guarantee or give any warranty about the information provided.
Interested parties must rely solely on their own enquiries.

LJ Hooker