



19 Cudmirrah Avenue, Cudmirrah

A 1960's Coastal Classic!

Step back into the easy-going charm of the 1960s with this coastal cottage.

Set on a leafy 784m² block, the home features warm timber floors and a simple layout with open-plan living, kitchen and dining.




The oversized main bedroom is a rare find in homes of this era, offering plenty of room to unwind. The combined bathroom and laundry keep things practical, while the additions of a front deck and a covered back entertaining area extend the living outdoors, letting you follow the sun from morning to afternoon.

Side access leads to a detached garage and garden shed.

All of this sits just moments from pristine coastline, walking trails through Conjola National Park and the sparkling shores of Swan Lake where you can catch the sunset over the water. Your morning coffee or a lazy Sunday brunch is only 550m away at the beloved Cuddy Cafe;

This is coastal living at its most effortless.

A charming classic with room to make it your own, in a location you'll never want to leave.

2  1  1 

FOR SALE

Please Call

AGENTS

Unity Naismith

0421 715 899

unaismith.sussexinlet@ljhooker.com.au

John Naismith

0475 362 647

jnaismith.sussexinlet@ljhooker.com.au

AGENCY

LJ Hooker Sussex Inlet

(02) 4441 2135

All information contained therein is gathered from relevant third parties sources. We cannot guarantee or give any warranty about the information provided. Interested parties must rely solely on their own enquiries.

 **LJ Hooker**

Call John or Unity to find out more today.

MORE DETAILS

Property ID	9QJ1S
Property Type	House
Land Area	784 m2
Including	Toilets (1)
	Outdoor Entertaining
	Floorboards
	Secure Parking

Unity Naismith 0421 715 899

Salesperson | unaismith.sussexinlet@ljhooker.com.au

John Naismith 0475 362 647

Salesperson | jnaismith.sussexinlet@ljhooker.com.au

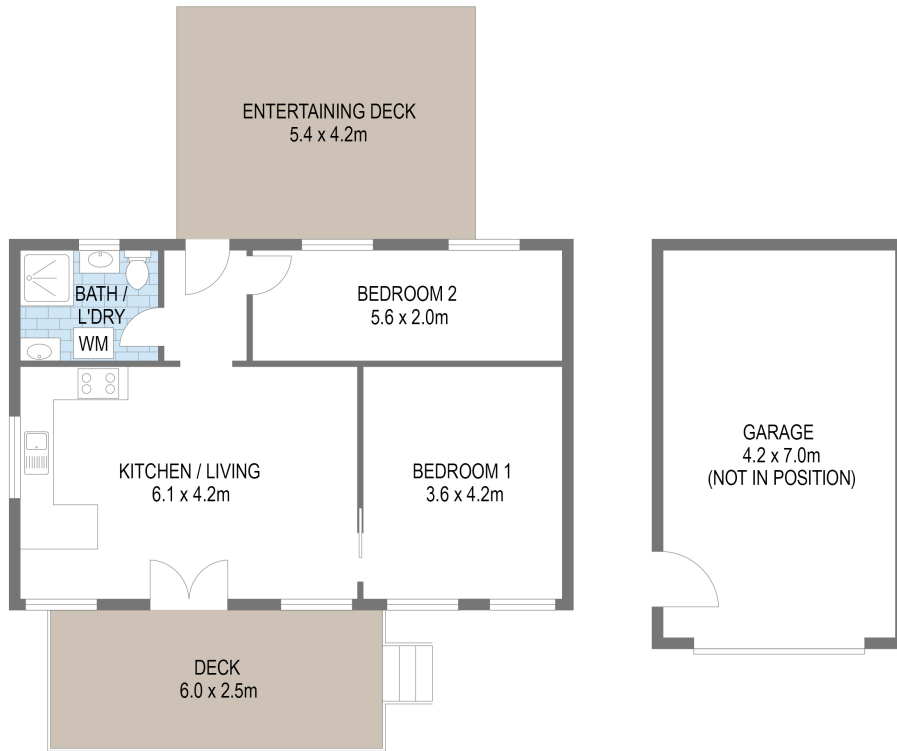
LJ Hooker Sussex Inlet (02) 4441 2135

1/159 Jacobs Drive, SUSSEX INLET NSW 2540

sussexinlet.ljhooker.com.au | sussexinlet@ljhooker.com.au



All information contained therein is gathered from relevant third parties sources.
We cannot guarantee or give any warranty about the information provided.
Interested parties must rely solely on their own enquiries.



Scale in metres. Indicative only. Dimensions are approximate. All information contained herein is gathered from sources we believe to be reliable. However we cannot guarantee its accuracy and interested persons should rely on their own enquiries



19 Cudmirrah Avenue, Cudmirrah



All information contained therein is gathered from relevant third parties sources.
We cannot guarantee or give any warranty about the information provided.
Interested parties must rely solely on their own enquiries.

