



Cudlee Creek, 376 Cudlee Creek Road

YOUR LIFESTYLE PROPERTY WAITS!!

Embrace tranquillity at 376 Cudlee Creek Road! A haven nestled in the heart of nature. This picturesque property offers a perfect blend of modern living and rural charm. With sprawling landscapes and breathtaking views, it's an ideal retreat from the hustle and bustle. The addition of a convenient granny flat offers flexibility for guests, extended family, or even a home office.

Features include

- * Five bedrooms plus granny flat
- * Three bathrooms to cater for the whole family
- * New kitchen for your culinary delights
- * Open-plan meals and family room
- * Massive undercover entertaining area with heating, cooling and blinds
- * Expansive grounds, perfect for all your outdoor activities
- * Fire protection/irrigation systems



Disclaimer: All information contained therein is gathered from relevant third parties sources. We cannot guarantee or give any warranty about the information provided. Interested parties must rely solely on their own enquiries.



For Sale
\$1,239,000 - \$1,319,000

View
ljhooker.com.au/29PNGJU

Contact
Craig Ricciuto
0417 806 329
craigr@ljhsales.com.au

**LJ Hooker Greenwith | Golden Grove
| Mawson Lakes | Modbury
(08) 8289 6660**

- * Plant & equipment, ride on lawn mower, large power generator etc
- * Ample shedding for your cars, workshops
- * 7400 m2 (approx.) of rural escape
- * spring fed dam
- * Bore water

Don't miss out on this unique opportunity to call 376 Cudlee Creek Road your home. This property is a must for your inspection to explore the endless possibilities this property has to offer!

Enquire today!

All information provided has been obtained from sources we believe to be accurate, however, we cannot guarantee the information is accurate and we accept no liability for any errors or omissions (including but not limited to a property's land size, floor plans and size, building age and condition). Interested parties should make their own enquiries and obtain their own legal and financial advice. Should this property be scheduled for auction, the Vendor's Statement may be inspected at either of our two LJ Hooker Property Specialists Real Estate offices for 3 consecutive business days immediately preceding the auction and at the auction for 30 minutes before it starts.

RLA 208516

More About this Property

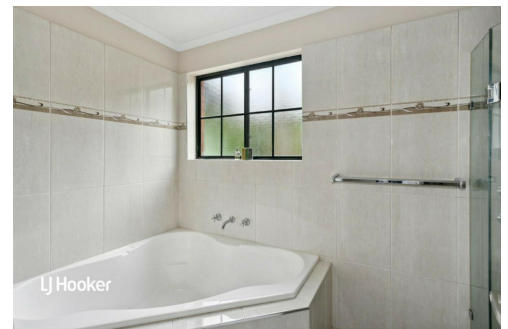
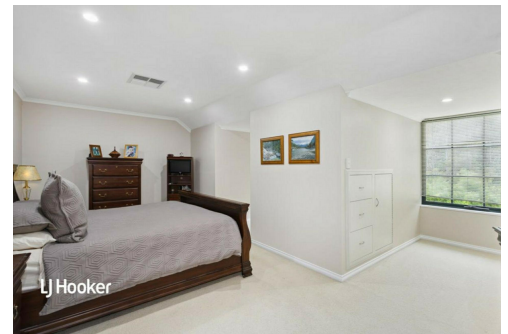
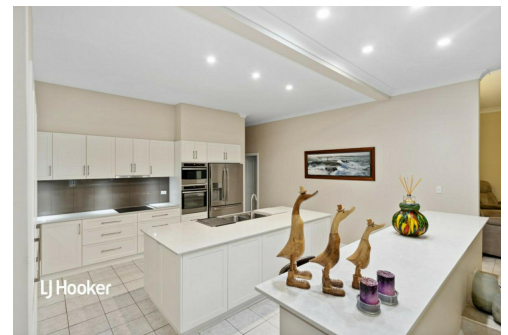
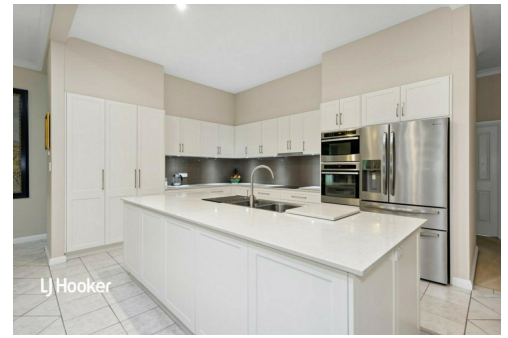
Property ID	29PNGJU
Property Type	House
House Size	347 m ²
Land Area	7400 m ²
Including	Study Air Conditioning Ducted Cooling Evaporative Cooling Dishwasher Outdoor Entertaining Workshop Solar Panels Water Tank

Craig Ricciuto 0417 806 329

Managing Partner | Sales Specialist | craig@ljhsales.com.au

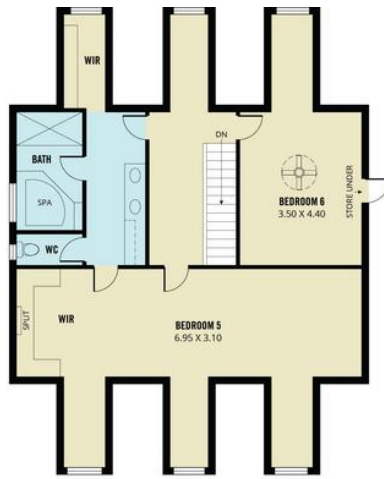
LJ Hooker Greenwith | Golden Grove | Mawson Lakes | Modbury (08) 8289 6660

North East, Shop 2, 1007 North East Road, RIDGEHAVEN SA 5097
greenwithgoldengrove.ljhooker.com.au | info@ljhsupport.com.au



Disclaimer: All information contained therein is gathered from relevant third parties sources. We cannot guarantee or give any warranty about the information provided. Interested parties must rely solely on their own enquiries.

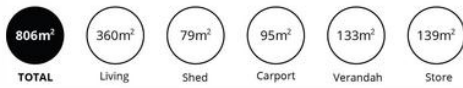
**LJ Hooker Greenwith | Golden Grove
 | Mawson Lakes | Modbury
 (08) 8289 6660**



UPPER LEVEL



LOWER LEVEL



Scale in metres. This drawing is for illustration purposes only. All measurements are approximate and details intended to be relied upon should be independently verified.

Produced by The Fotobase Group