



4 Hyton Crescent, Croydon

2 🏠 1 🚿 2 🚗

Get Into the Panorama

Often requested, seldom found! This character 2 bedroom, 1 bathroom weatherboard property sits on a majestic corner block of level land of 944sqm approx and lords over the 3136 postcode. Tucked beautifully in a quiet cul-de-sac, surrounded by quality homes and neighbours, the land is zoned in the Maroondah Council Design Development Overlay Schedule 2 which allows for future construction and new style to be created. Currently under a month to month tenancy, this could be the space, the destination that changes it all. Call to inspect.
TERMS: 10% deposit, Balance 30/60/90 days

AUCTION

Sat 16th May @ 11:00AM

VIEW

Sat 25th Apr @ 12:00PM - 12:30PM

AGENTS

Richard Goldsmith
0407 348 172
richardgoldsmith@ljhookermooroolbark.com.au

Ben Hudson
0424 288 954
benhudson@ljhookermooroolbark.com.au

AGENCY

LJ Hooker Mooroolbark
(03) 9726 7711

All information contained therein is gathered from relevant third parties sources. We cannot guarantee or give any warranty about the information provided. Interested parties must rely solely on their own enquiries.

 **LJ Hooker**

MORE DETAILS

Property ID	S1PFMS
Property Type	House
Land Area	944 m2
Including	Air Conditioning Ducted Heating Toilets (1) Dishwasher Floorboards Built-in-Robes

Richard Goldsmith 0407 348 172


Senior Sales Consultant |
richardgoldsmith@ljhookermooroolbark.com.au

Ben Hudson 0424 288 954

Sales Consultant | benhudson@ljhookermooroolbark.com.au

LJ Hooker Mooroolbark (03) 9726 7711

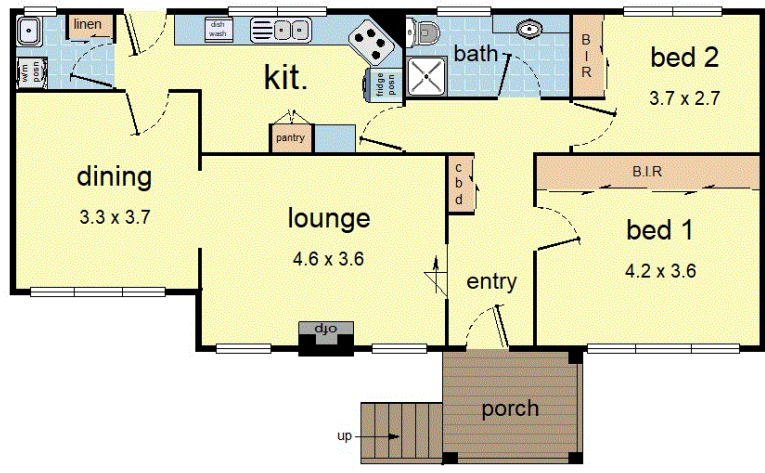
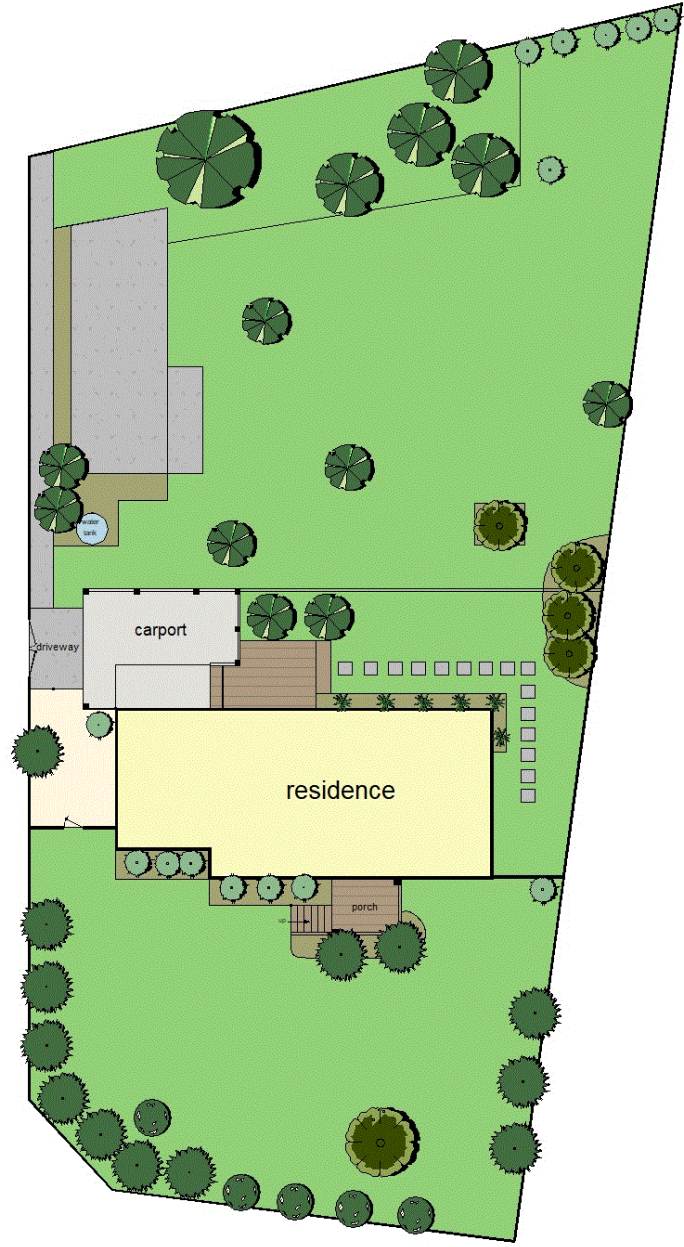
64 Brice Avenue, MOOROOLBARK VIC 3138
mooroolbark.ljhooker.com.au | admin@ljhookermooroolbark.com.au



 approx. scale (m)

 This plan is a sketch, and all data shown is general only.

 NB: All stated dimensions are approximate only & should not be taken as definite.



4 Hyton Crescent, Croydon

All information contained therein is gathered from relevant third parties sources. We cannot guarantee or give any warranty about the information provided. Interested parties must rely solely on their own enquiries.