

Croydon, 4/3 Morris Road

A Peaceful Place with Park Views

Tucked away at the rear of a quiet block of four, this neat and tidy three-bedroom home offers low-maintenance living in a peaceful setting.

Perfectly positioned on a quiet street, right next to the Tarralla Creek Trail, the home offers a practical floorplan that includes three comfortable bedrooms, one with ensuite effect to the central bathroom, and a neat open plan kitchen/dining and living room offering serene park views. With a fully fenced garden, and a private gate to the parkland next door, you'll have as much outdoor space as you could ever need.

Ideal for first-home buyers, downsizers, or savvy investors, this home offers comfort, convenience, and charm—all just a quiet walk through the park to everything Croydon has to offer.

3 

1 

2 

For Sale
Please Call

View
ljhooker.com.au/RZPFMS

Contact
Ben Hudson
0424 288 954
benhudson@ljhookermooroolbark.com.au
Richard Goldsmith
0407 348 172
richardgoldsmith@ljhookermooroolbark.com.au



Disclaimer: All information contained therein is gathered from relevant third parties sources. We cannot guarantee or give any warranty about the information provided. Interested parties must rely solely on their own enquiries.

LJ Hooker Mooroolbark
(03) 9726 7711

More About this Property

Property ID	RZPFMS
Property Type	House
Including	Air Conditioning Ducted Heating Toilets (1) Built-in-Robes

Ben Hudson 0424 288 954

Sales Consultant | benhudson@ljhookermooroolbark.com.au

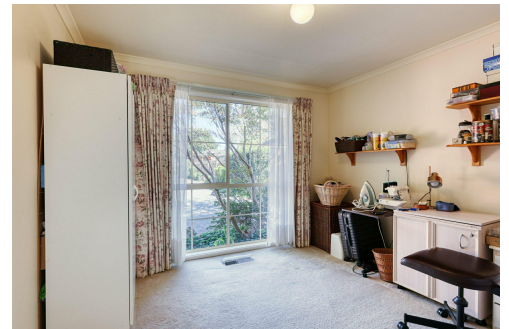
Richard Goldsmith 0407 348 172

Senior Sales Consultant | richardgoldsmith@ljhookermooroolbark.com.au

LJ Hooker Mooroolbark (03) 9726 7711

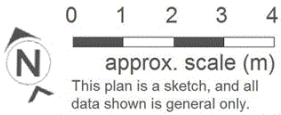
64 Brice Avenue, MOOROOLBARK VIC 3138

mooroolbark.ljhooker.com.au | admin@ljhookermooroolbark.com.au



Disclaimer: All information contained therein is gathered from relevant third parties sources. We cannot guarantee or give any warranty about the information provided. Interested parties must rely solely on their own enquiries.

**LJ Hooker Mooroolbark
(03) 9726 7711**



This plan is a sketch, and all data shown is general only.

NB: All stated dimensions are approximate only & should not be taken as definite.

