



26/122-132 Georges River Road, Croydon Park

## Sold by LJ Hooker Ashfield | Inner West

Tucked away at the rear of the building and positioned on the top floor, this oversized one-bedroom unit enjoys a peaceful setting with a leafy outlook and abundant natural sunlight. The complex features a central pool surrounded by greenery, creating a relaxed and resort style setting.

The property features:

- Oversized living area with study nook
- Additional storage space
- Internal laundry
- Neat and tidy bathroom
- Large bedroom with built-in robe
- Lock-up garage

**DISCLAIMER:** This advertisement contains information provided by third parties. While all care is taken to ensure otherwise, LJ Hooker Ashfield does not make any representation as to the accuracy of the information contained in the advertisement, does not accept and responsibility or liability and recommends that any client make their own investigations and enquiries. All images are indicative of the property only.

All information contained therein is gathered from relevant third parties sources. We cannot guarantee or give any warranty about the information provided. Interested parties must rely solely on their own enquiries.

1 1 1

### FOR SALE

Sold by LJ Hooker Ashfield | Inner West

### AGENTS

Domenic Bucciarelli  
0411 199 466  
domenic@ljha.com.au

Dylan Bozicevic  
0449 787 123  
dylan@ljha.com.au

### AGENCY

LJ Hooker Ashfield  
(02) 9797 6044

LJ Hooker

## MORE DETAILS

Property ID 1AB4F8B  
Property Type Apartment

**Domenic Bucciarelli 0411 199 466**

Principal-Licensee in Charge | [domenic@ljha.com.au](mailto:domenic@ljha.com.au)

**Dylan Bozicevic 0449 787 123**

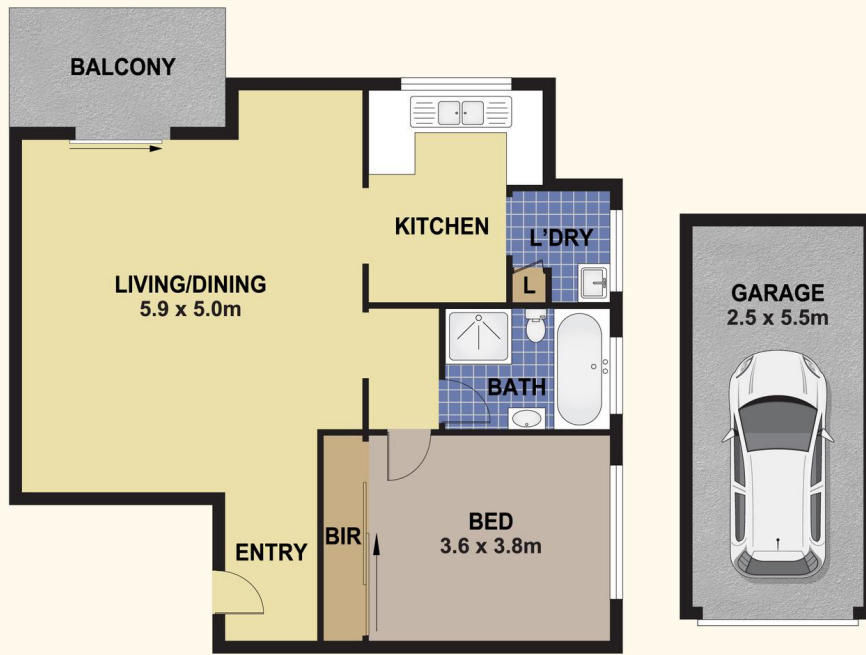
Sales Associate | [dylan@ljha.com.au](mailto:dylan@ljha.com.au)

**LJ Hooker Ashfield (02) 9797 6044**

216 Liverpool Road, ASHFIELD NSW 2131  
[ashfield.ljhooker.com.au](http://ashfield.ljhooker.com.au) | [ashfield@ljha.com.au](mailto:ashfield@ljha.com.au)



All information contained therein is gathered from relevant third parties sources.  
We cannot guarantee or give any warranty about the information provided.  
Interested parties must rely solely on their own enquiries.



## 5/122 GEORGES RIVER ROAD, CROYDON PARK

### DISCLAIMER

ALL DIMENSIONS SHOWN ARE FOR MARKETING PURPOSES ONLY. ALL DIMENSIONS ARE APPROXIMATE AND NOT TO SCALE. THEY ARE SUBJECT TO ERRORS AND INACCURACIES AND NO LIABILITY WILL BE ACCEPTED. INTERESTED PARTIES SHOULD MAKE THEIR OWN ENQUIRIES.

All information contained therein is gathered from relevant third parties sources. We cannot guarantee or give any warranty about the information provided. Interested parties must rely solely on their own enquiries.