

74 Cheltenham Road, Croydon


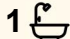

Affordable Charming Family Home in a Prime Lifestyle Location

Perfectly positioned between the vibrant hubs of Burwood and Croydon, 74 Cheltenham Road offers an outstanding opportunity to secure a beautifully presented home in one of the area's most convenient and sought-after pockets.

Showcasing three generously sized bedrooms, all with built-in wardrobes, the home combines comfort and functionality with a modern kitchen featuring gas cooking and an updated bathroom. Light-filled and spacious living areas provide the perfect setting for relaxed family living and entertaining.

Step outside to a deep rear garden, offering plenty of space for children, entertaining, or the potential to further enhance and add your own personal touches over time.

Ideally located just moments from local shops, cafes, and train stations, as well as being within easy reach of highly regarded schools, this property presents a rare and affordable opportunity for first home buyers, families, and investors alike.

3  1  0 

FOR SALE

For Sale \$1,880,000

VIEW

Sat 23rd May @ 11:00AM - 11:30AM

AGENTS

Joe Murania
0416 044 267
joe@ljhburwood.com.au

AGENCY

LJ Hooker Burwood
(02) 9745 3999

All information contained therein is gathered from relevant third parties sources.
We cannot guarantee or give any warranty about the information provided.
Interested parties must rely solely on their own enquiries.

 **LJ Hooker**

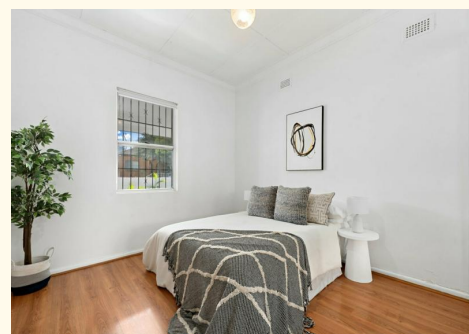
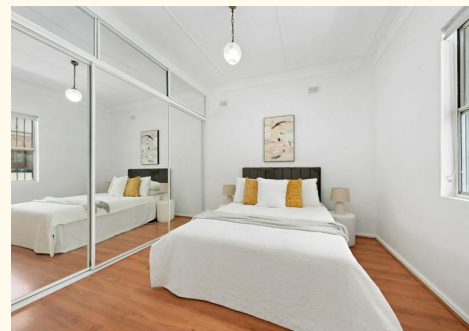
A superb chance to enter a thriving and tightly held neighbourhood—this is one not to be missed.

MORE DETAILS

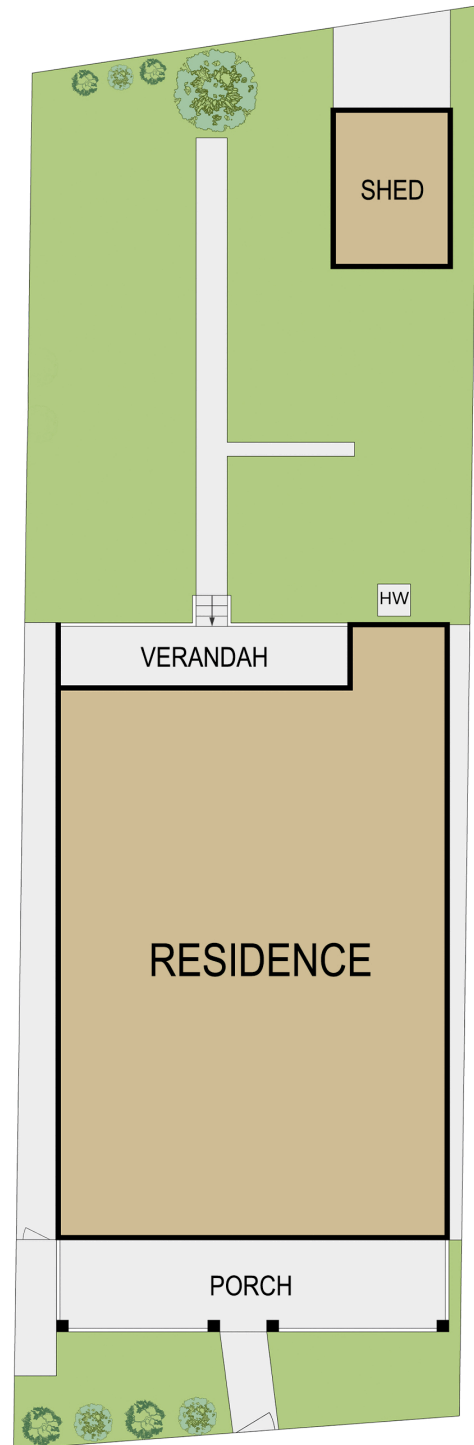
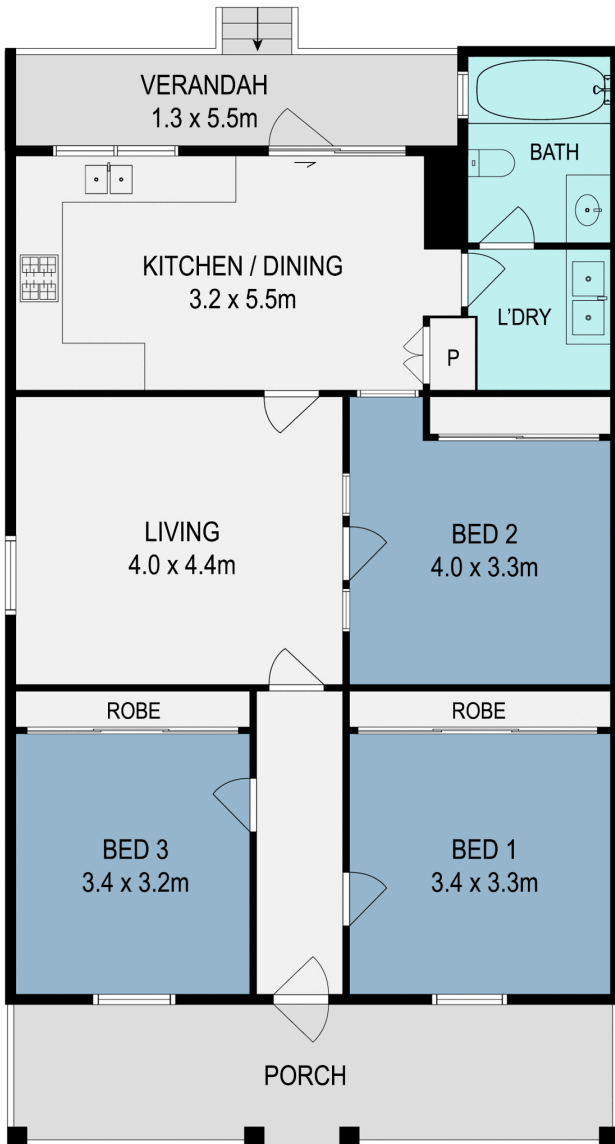
Property ID 12BEF8R
Property Type House

Joe Murania 0416 044 267
Director | Sales Manager | joe@ljhburwood.com.au

LJ Hooker Burwood (02) 9745 3999
Shop 2/27-29 Burwood Road, BURWOOD NSW 2134
burwood.ljhooker.com.au | burwood@ljhburwood.com.au



All information contained therein is gathered from relevant third parties sources.
We cannot guarantee or give any warranty about the information provided.
Interested parties must rely solely on their own enquiries.



SITE PLAN
(NOT TO SCALE)



74 Cheltenham Road, Croydon

DISCLAIMER: THIS FLOOR PLAN IS INTENDED AS A GUIDE ONLY. IT DOES NOT CONSTITUTE PART OF ANY LEGAL DOCUMENTS. ALL DIMENSIONS ARE APPROXIMATE, ACTUAL MAY VARY. NO LIABILITY ACCEPTED. YOU MUST SEEK ADVICE FROM YOUR SOLICITOR. FLOOR PLAN BY WWW.MCPIXELSAU.COM