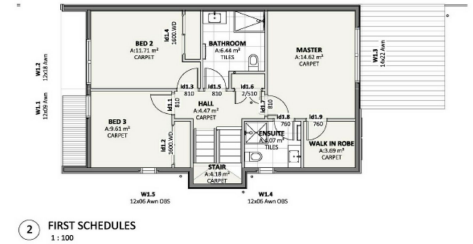
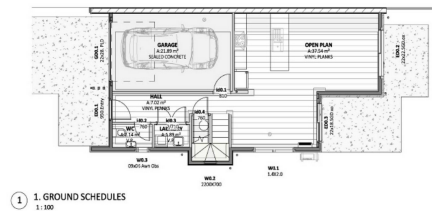




STREET VIEW

ARTIST'S IMPRESSION ONLY.
LANDSCAPE AND FURNITURE ARE NOT TO SCALE.
NO MEASUREMENTS GIVEN.



Cromwell, 24 Wallis Drive

LOCK 'N' LEAVE FOR THE OUTDOOR ENTHUSIAST

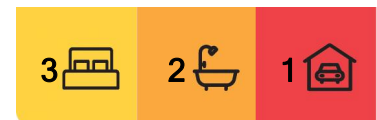
It doesn't get much better than this —a modern, low maintenance home ready for you to settle in and immerse yourself in the heart of Central Otago's outdoor paradise. With epic hiking and biking trails right on your doorstep, and Lake Dunstan just a stone's throw away, adventure is always within reach. Explore world-renowned wineries or hit the slopes with ease - Queenstown and Wanaka's ski fields are just a short drive away. Whether you're after relaxation or adrenaline this is the perfect base to experience the best of Central Otago's wild beauty.

Step into a world of modern elegance and forward-thinking design with this stunning new build. Located in the vibrant community of Cromwell, this home offers the ideal blend of contemporary living, quality craftsmanship and a lifestyle that lets you embrace everything Central Otago has to offer.

With 3 spacious double bedrooms, including a master with ensuite upstairs, this home provides the ultimate retreat. The open plan living space downstairs is perfect for both relaxation and entertaining flowing seamlessly into a modern kitchen equipped with



Disclaimer: All information contained therein is gathered from relevant third parties sources. We cannot guarantee or give any warranty about the information provided. Interested parties must rely solely on their own enquiries.



For Sale
\$975,000

View
By Appointment

Contact
Jo Tickle
0274 855 701
jtickle.alexandra@ljhooke.co.nz

Jane Hoskins
0274 486 060
jhoskins.alexandra@ljhooke.co.nz

LJ Hooker Alexandra
(03) 448 8888
Central and Lakes Realty 2008 Ltd

premium fittings. A separate toilet adds extra convenience for guests and the single garage with additional off street parking ensures practicality without compromising on style. Whether you're looking for a permanent home or a lock-up-and-leave getaway this property is designed with lifestyle and convenience at its heart. Come and experience the future of living in Central Otago.

Contact agent to enquire about other new build listings in the area.



REAR VIEW

ARTISTS IMPRESSION ONLY.
LANDSCAPE AND INTERIORS MAY DIFFER.
NO NEIGHBOURS SHOWN.

More About this Property

Property ID	15NQGME
Property Type	House
House Size	147 m2
Land Area	250 m2
Including	Toilets (3) Dishwasher

Licensed Real Estate Agents (REAA2008)

Jo Tickle 0274 855 701

Licensed Salesperson | jtickle.alexandra@ljhooker.co.nz

Jane Hoskins 0274 486 060

Manager/Licensed Salesperson | jhoskins.alexandra@ljhooker.co.nz

LJ Hooker Alexandra (03) 448 8888

Central and Lakes Realty 2008 Ltd

10 Centennial Ave, ALEXANDRA 9320

alexandra.ljhooker.co.nz | alexandra@ljhooker.co.nz



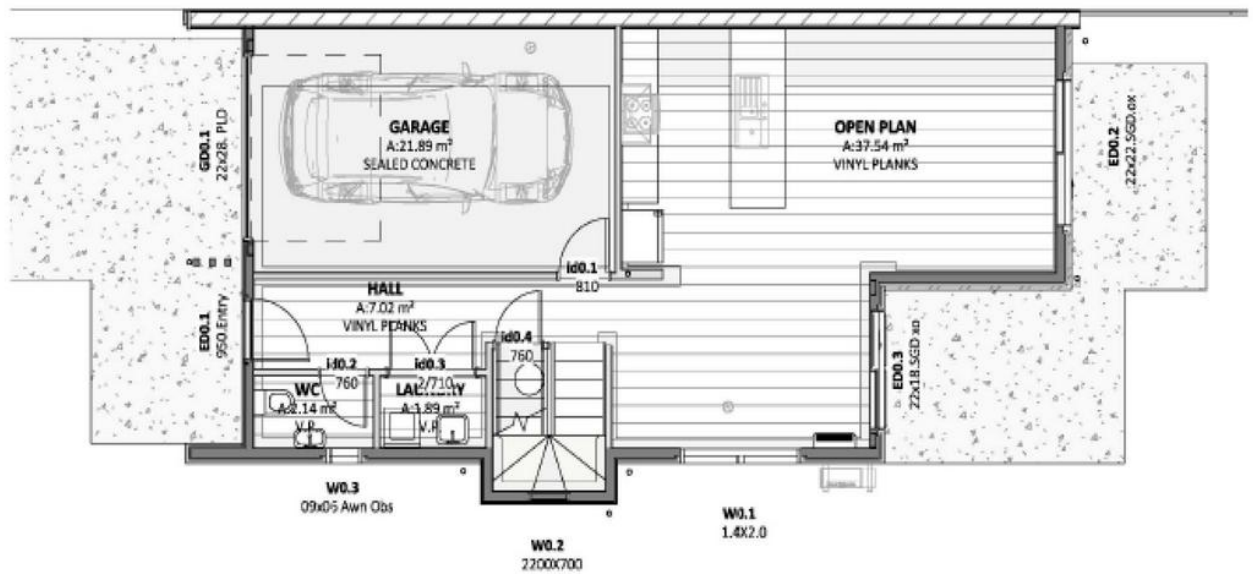
LJ Hooker Alexandra

(03) 448 8888

Central and Lakes Realty 2008 Ltd

Disclaimer: All information contained therein is gathered from relevant third parties sources.

We cannot guarantee or give any warranty about the information provided. Interested parties must rely solely on their own enquiries.



1. GROUND SCHEDULES

1 : 100