

12 Hutt Court, Crestmead

SOLD By Renee Czapla

Multigenerational Living | Bring the WHOLE family!!

Dual Kitchens! Dual Potential!

Tucked away in a peaceful cul de sac, 12 Hutt Court, Crestmead offers the perfect balance of independence and togetherness with its rare dual living layout. Whether you're catering for extended family, teens who need their own space, or exploring investment potential, this property delivers flexibility, comfort and convenience all rolled into one!

THE MAIN RESIDENCE boasts 3 bedrooms, a newly renovated bathroom, separate toilet and laundry, plus a welcoming open plan lounge and dining area that flows to a private outdoor entertaining zone.

THE SELF CONTAINED GRANNY FLAT features 1 spacious bedroom, a two-way bathroom, its own living, dining and kitchen, private entry and a separate entertaining zone. The ideal retreat for family, guests or sublet rental potential.

Set on a 603m² block with dual carports (front and side), plus side access, this property has the space and practicality to suit a variety of

4 2 4

FOR SALE

Multi Generational Living!!

AGENTS

Renee Czapla
0403 592 280
rczapla@ljhcomplete.com.au

AGENCY

LJ Hooker Property Complete
1300 360 388

All information contained therein is gathered from relevant third parties sources. We cannot guarantee or give any warranty about the information provided. Interested parties must rely solely on their own enquiries.



lifestyles.

As a whole the property features:

- 4 Bedrooms
- 2 Bathrooms
- 2 Kitchens
- 2 separate outdoor entertaining areas
- 2 double carports
- Side access
- Fully fenced
- All on a 603m2 block
- Positioned in a quiet cul-de-sac
- Walking distance to schools, shops & close to Mt Lindesay Highway

For the investors - The rental potential for this property as a whole is estimated at \$800-\$850 per week and vacant possession at settlement.

This is more than just a home, it's a versatile lifestyle opportunity in a prime location. Be quick! This property will NOT last!!

Disclaimer:

Property images may have been digitally altered or staged for marketing purposes and may not constitute a complete representation of the property condition being purchased. Any photographs used by LJ Hooker may only show certain aspects of the property at the time the photographs are taken and any prospective buyer should inspect the property.

MORE DETAILS

Property ID	20C4HGS
Property Type	House
House Size	281 m2
Land Area	603 m2
Including	Air Conditioning Toilets (2) Outdoor Entertaining Built-in-Robes Fully Fenced

Renee Czaplá 0403 592 280

Sales Consultant | rczapla@ljhcomplete.com.au

LJ Hooker Property Complete 1300 360 388

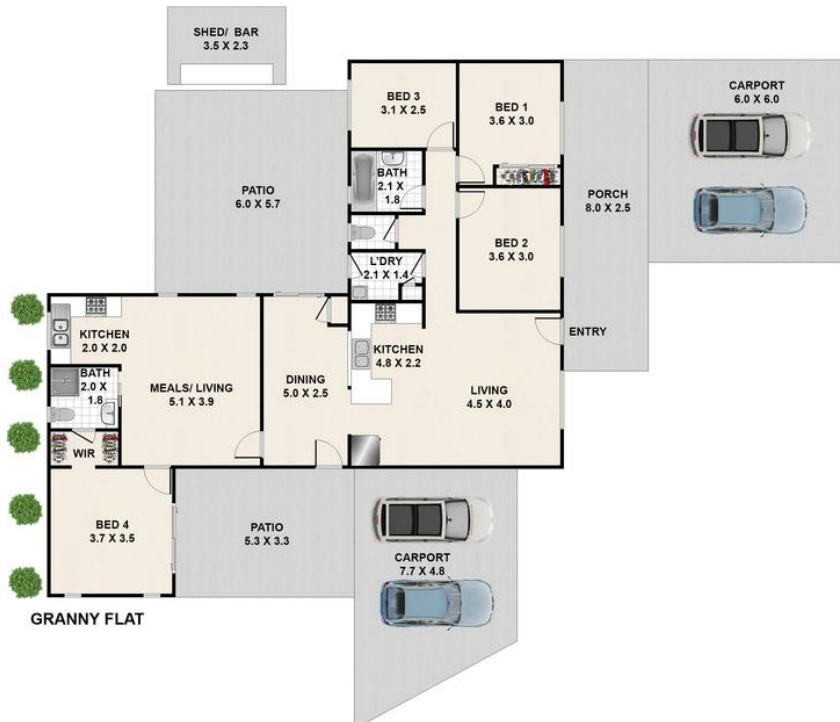
Level 1, 32 Everglade Street, YARRABILBA QLD 4207
propertycomplete.ljhooker.com.au | admin@ljhcomplete.com.au



12 Hutt Court, Crestmead

4 | 2 | 4 | 281 Sqm | |

Total approx area includes outside covered areas



Whilst every attempt has been made to ensure the accuracy of the floorplan shown, all measurements, positioning, fixtures, fittings and any other data shown are an approximate interpretation for illustrative purposes only and are not to scale. No responsibility is taken for any error, omission, miss-statement or use of data shown