

## Crestmead, 1 Kellie Court

### Expansive Corner Block Family Entertainer in Peaceful Pocket

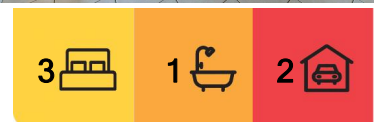
Brimming with potential and located in one of Crestmead's most convenient family-friendly enclaves, this spacious brick lowset offers generous proportions and effortless liveability. Positioned on a generous 622 sqm corner block with handy side access and a huge double shed, this neat and tidy home is ideal for growing families or those seeking extra space to accommodate their hobbies and lifestyle needs.

At a Glance:

- Generous 622 sqm corner block with side access and large double shed
- Spacious open plan lounge and dining with ideal northerly aspect
- Modern granite kitchen with sleek electric appliances and ample storage
- Three bedrooms with the option of a fourth utilising a tiled living area
- Covered outdoor entertaining patio and easy-care fenced backyard



**Disclaimer:** All information contained therein is gathered from relevant third parties sources. We cannot guarantee or give any warranty about the information provided. Interested parties must rely solely on their own enquiries.



**For Sale**  
MUST BE SOLD

**View**  
By Appointment

**Contact**  
**Lynda Simpson**  
0424 279 188  
lyndasimpson@ljhpp.com.au

**LJ Hooker Property Partners**  
07 3344 0288

Perfectly placed to suit growing families, this property sits just a short walk to local parks, schools, childcare centres, shops and public transport - making daily life a breeze.

Whether it's a quick school drop-off, grocery run or commute to work, you'll find everything you need close by, including major shopping destinations like Grand Plaza, Logan Reserve Shopping Village, and Marsden on Fifth. Loganlea Train Station and the Logan Motorway are also just minutes away for easy travel to Brisbane CBD or the Gold Coast.

- 400 m to Dombeyah Park
- 400 m to St Francis College
- 300 m to bus stop
- 550 m to Goodstart Early Learning Crestmead
- 800 m to Kensington Fair
- 950 m to Crestmead State School
- 2.5 km to Marsden on Fifth Shopping Centre
- 3.3 km to Marsden State High School
- 4.2 km to Logan Reserve Shopping Village
- 5.4 km to Loganlea Train Station
- 6.7 km to Logan Motorway
- 7.4 km to Grand Plaza

Set behind a quaint green picket fence and boasting dual street frontage, this brick lowset offers both charm and potential. Surrounded by neat lawns and gardens, one side of the block features a gated driveway for everyday parking, while the other provides access to a large shed - ideal for parking extra vehicles, trailers, caravans or even boats. The property's peaceful position in a quiet suburban street adds to its appeal, making it a sanctuary for those seeking both space and serenity.

Step through the gate and make your way down the driveway to the sweet front porch - the perfect spot for your morning coffee. Within, a spacious open plan living and dining area stretches out before you, bathed in natural light thanks to the northerly aspect. With easy-care tiles underfoot and ducted air conditioning and ceiling fans throughout, this home is comfortable and low maintenance from front to back - perfect for relaxed family living and entertaining alike.

Positioned just off the dining area is the home's heart - a stunning kitchen where granite benchtops shimmer beneath overhead lighting. Contemporary cabinetry provides more than enough space for your cooking essentials, while modern electric appliances and a clever layout make this a dream kitchen for meal prep, baking or entertaining friends.

Sliding doors lead from the living area out to the rear patio - a spacious covered area ideal for weekend barbecues and outdoor dining. Overlooking a secure, fenced backyard with plenty of space for children and pets to play safely, this yard is designed for low fuss enjoyment. Whether you're relaxing with family or hosting guests, this low maintenance outdoor zone is sure to impress.

Three light-filled bedrooms await back inside, including carpet and built-in robes for effortless storage. It offers an exceptionally large and tiled room, offering the flexibility to use it as a rumpus room, media lounge, home office, bedroom or private guest suite. All rooms are serviced by a tidy, well-maintained bathroom and a separate toilet, providing



**LJ Hooker Property Partners**  
**07 3344 0288**

**Disclaimer:** All information contained therein is gathered from relevant third parties sources. We cannot guarantee or give any warranty about the information provided. Interested parties must rely solely on their own enquiries.

convenience for busy households.

Additional Highlights:

- Fully fenced corner block with dual street frontage
- Internal laundry with external access
- Side access and garden shed
- Water tank
- NBN connectivity

With spacious living zones, an entertainer's layout, and a highly practical design full of potential, this Crestmead gem won't stay on the market long. Contact Lynda Simpson today to arrange your private inspection or find out more about this fantastic family home.

All information contained herein is gathered from sources we consider to be reliable. However, we cannot guarantee or give any warranty about the information provided and interested parties must solely rely on their own enquiries.

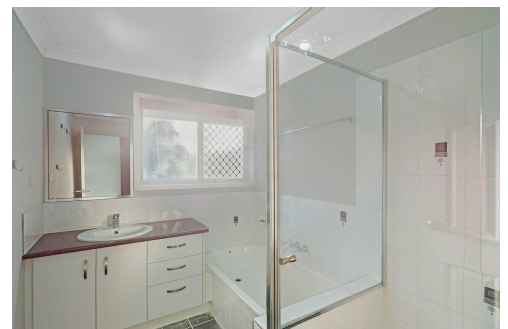
BDD Pty Ltd with Sunnybank Districts P/L T/A LJ Hooker Property Partners  
ABN 47 676 306 264 / 21 107 068 020

## More About this Property

<b>Property ID</b>	B3B9F4R
<b>Property Type</b>	House
<b>Land Area</b>	622 m2
<b>Including</b>	Air Conditioning Ducted Cooling Toilets (1) Outdoor Entertaining Built-in-Robes Secure Parking Fully Fenced Remote Garage Water Tank

**Lynda Simpson 0424 279 188**  
Agent | [lyndasimpson@ljhpp.com.au](mailto:lyndasimpson@ljhpp.com.au)

**LJ Hooker Property Partners 07 3344 0288**  
25 Pinelands Road, SUNNYBANK HILLS QLD 4109  
[propertypartners.ljhooker.com.au](http://propertypartners.ljhooker.com.au) | [sunnybankhills@ljhpp.com.au](mailto:sunnybankhills@ljhpp.com.au)



**LJ Hooker Property Partners**  
**07 3344 0288**

**Disclaimer:** All information contained therein is gathered from relevant third parties sources. We cannot guarantee or give any warranty about the information provided. Interested parties must rely solely on their own enquiries.

# 1 Kellie Court, Crestmead

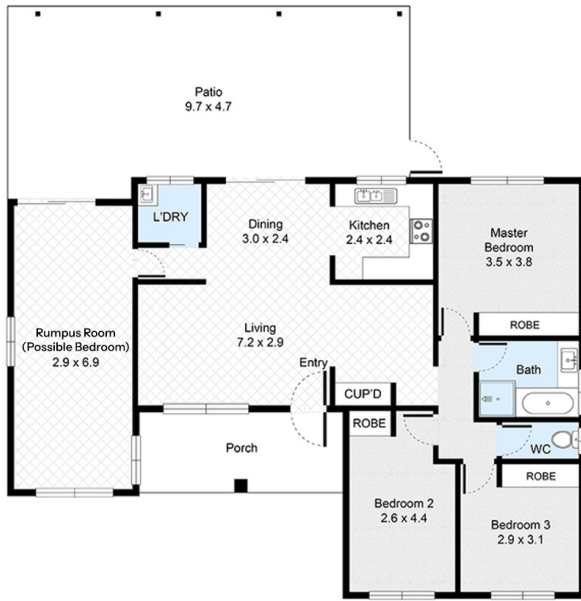
3 Bed 1 Bath 2 Car



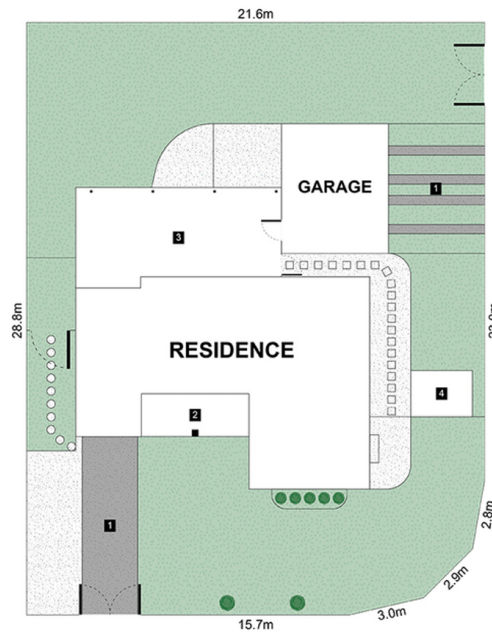
## LEGEND

1. Driveway
2. Porch
3. Patio
4. Shed

Internal : 106m<sup>2</sup>  
 External : 43m<sup>2</sup>  
 Land Size : 622m<sup>2</sup>



FLOOR PLAN



SITE PLAN

All information contained herein is gathered by Little Hinges. Whilst the scanning technology is highly reliable, we cannot guarantee its accuracy and interested parties should rely on their own enquiries.




This property is ready for you to virtually inspect now  
[littlehinges.com.au](http://littlehinges.com.au)