

10 Diplomat Crescent, Cranbourne South

Stunning Family Home - Ideal First Home or Smart Investment!


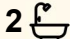
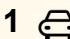
Set on an easy-care allotment of approximately 238 sqm, this charming family home offers the perfect blend of low-maintenance lifestyle and functional design. This is an excellent opportunity for first-home buyers, investors, or downsizers looking for modern comfort in a family-friendly location.

Upon entry, the home's youthful appeal is immediately apparent, highlighted by its modern finishes and a thoughtfully designed floorplan. All four bedrooms are cleverly segregated, providing enhanced privacy and flexibility for families, guests or tenants.

The heart of the home is the stylish modern kitchen, complete with stone benchtops, contemporary splashbacks and quality stainless steel appliances, including a dishwasher and rangehood. Overlooking the dining area and family room, this inviting space is perfect for everyday living and entertaining.

The living zone flows seamlessly to a low-maintenance outdoor area, featuring a paved patio and neatly finished pebbled yard-ideal for relaxed outdoor enjoyment without the upkeep.

Accommodation includes four well-sized bedrooms, three offering

4  2  1 

FOR SALE

\$680,000 - \$730,000

VIEW

Sun 12th Apr @ 12:15PM - 12:45PM

AGENTS

John Deo
0411 873 123
john.deo@ljhcasey.com.au

Rajesh Rednam
0420 222 141
rajesh.rednam@ljhcasey.com.au

AGENCY

LJ Hooker Hampton Park
(03) 9702 8388

All information contained therein is gathered from relevant third parties sources. We cannot guarantee or give any warranty about the information provided. Interested parties must rely solely on their own enquiries.



built-in sliding robes. The master bedroom is positioned at the front of the home and features a full ensuite and walk-in robe, creating a comfortable parents' retreat.

Additional highlights include internal access to the single remote lock-up garage, ducted heating, ducted evaporative cooling, and a low-maintenance front yard.

With its modern presentation, compact and easy-care block, and desirable outlook across parklands, this superb property presents a fantastic opportunity for first home buyers and investors alike. Inspect and see the value for yourself.

Enjoy the lifestyle perks of this sought-after neighbourhood with Brompton Estate BMX Pump Track & Playground and Ambassador Circuit Reserve Playground just a stroll away. For the golf enthusiast, the prestigious Ranfurly Golf Club is right nearby.

For further information or to arrange an inspection, contact Rajesh Rednam on 0420 222 141 or John Deo on 0411 873 123.

Disclaimer: All information contained herein is gathered from sources we consider to be reliable. However, we cannot guarantee or give any warranty about the information provided, and interested parties must solely rely on their own enquiries.

MORE DETAILS

Property ID	47YQ3FHE
Property Type	House
Land Area	237 m2
Including	Ensuite Ducted Heating Evaporative Cooling Dishwasher Floorboards Built-in-Robes Solar Hot Water Carpeted Close to Schools Close to Shops Close to Transport

John Deo 0411 873 123

Director - Officer In Effective Control | john.deo@ljhcasey.com.au

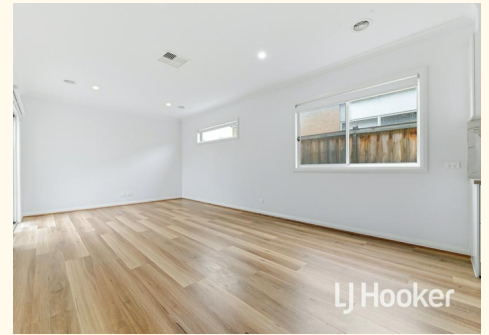
Rajesh Rednam 0420 222 141

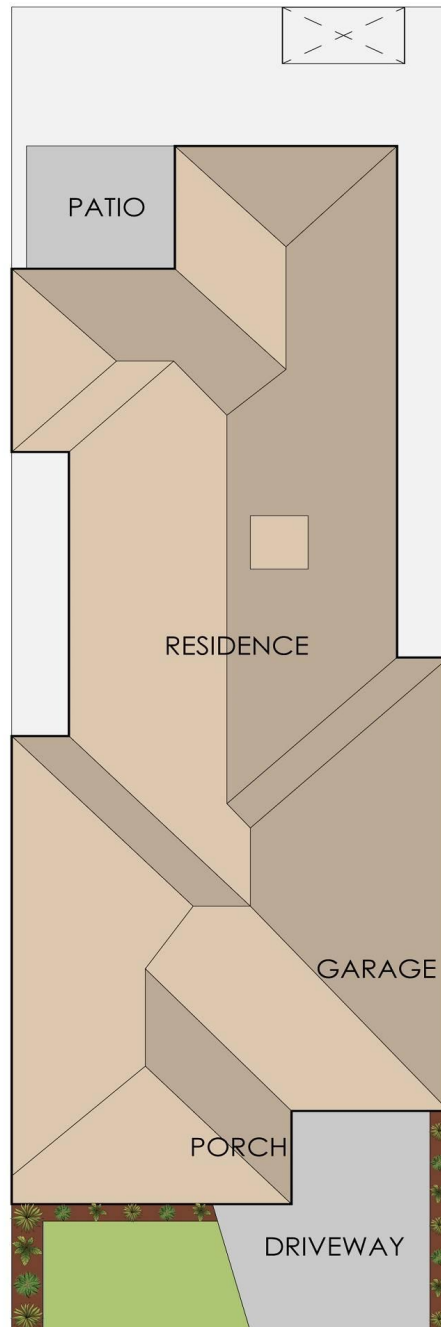
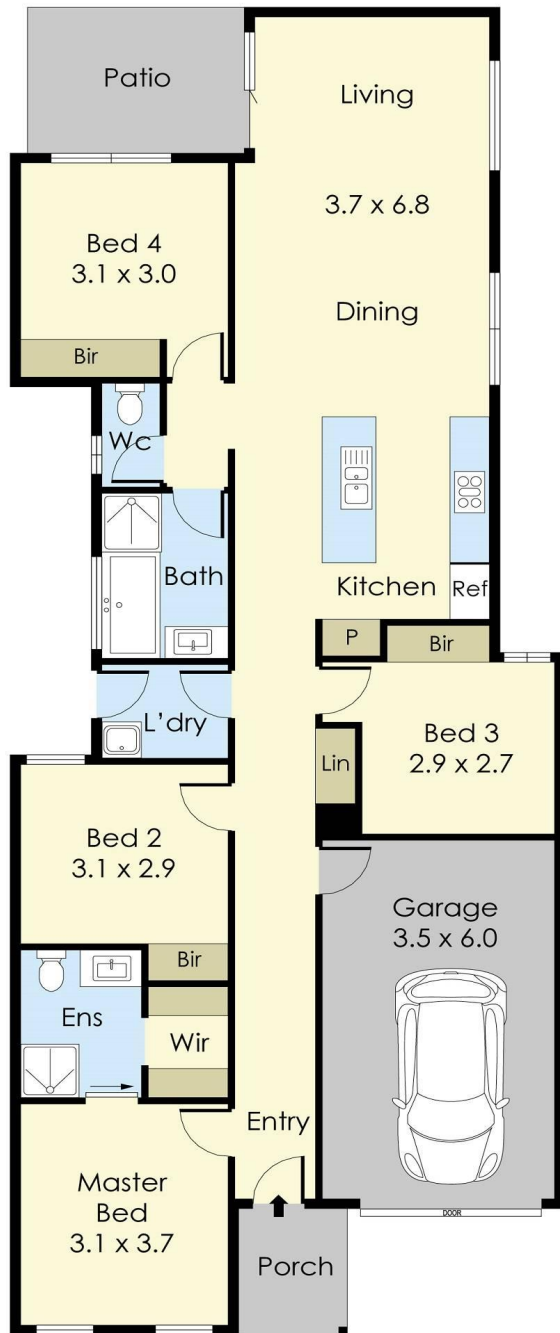
Sales Agent | rajesh.rednam@ljhcasey.com.au

LJ Hooker Hampton Park (03) 9702 8388

Shop 20, Hampton Park Shopping Centre, 166 Somerville Road,
HAMPTON PARK VIC 3976

hamptonpark.ljhooker.com.au | john.deo@ljhcasey.com.au





10 Diplomat Crescent, Cranbourne South

This floorplan is for illustration purposes only and no warranty is given to its accuracy.
Purchasers are advised to carry out their own investigations.