

Cranbourne North, 8 Cumquat Court

Lovely quiet court location —600m² block

Perfectly positioned in a peaceful court within the prestigious Waverley Park Estate, this beautifully updated 3-bedroom, 2-bathroom home is the ideal opportunity for first home buyers or young families looking for space, comfort, and convenience.

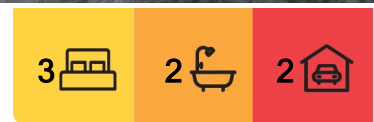
Set on a generous 600m² block and surrounded by quality family homes, this charming residence has been thoughtfully modernised throughout, offering fresh interiors and practical living spaces ready for immediate enjoyment.

Step through the separate entry into a spacious lounge-perfect for relaxing evenings with a movie. Flowing effortlessly from here is the recently retiled timber kitchen, featuring gas cooktop, electric wall oven, and a scenic outlook over the expansive rear yard-ideal for keeping an eye on the kids or pets at play.

Adjoining the kitchen is the generous family and dining area, complete with split system air



Disclaimer: All information contained therein is gathered from relevant third parties sources. We cannot guarantee or give any warranty about the information provided. Interested parties must rely solely on their own enquiries.



For Sale
Please Call

View
ljhooker.com.au/1XCWFBS

Contact
Darren Saxon
0418 341 722
darren.saxon@ljhcasey.com.au
Darren Saxon
0418 341 722
darren.saxon@ljhcasey.com.au

LJ Hooker Cranbourne
(03) 5996 4777

conditioning and a gas wall furnace, ensuring year-round comfort. Glass sliding doors open out to the backyard, offering a seamless indoor-outdoor lifestyle.

At the front of the home, the master bedroom is a peaceful retreat, complete with walk-in robe and a private ensuite. The two additional bedrooms, both with built-in robes are located separately and serviced by a well-appointed central bathroom and separate WC.

Recent updates include:

- Full interior repaint
- New carpets throughout
- New blinds
- New tiling in all wet areas
- New downlights
- New toilets
- New side colorbond fence with a double gate

Outside, the home continues to impress with a double garage, large, curved driveway offering ample parking, and new double gate access to the rear yard-perfect for storing a caravan, boat, or trailer.

All of this is located close to the local park and playground, and nearby to schools, Woolworths shopping centre, Bunnings, train station, kindergarten, medical centre, and more.

This is a fantastic opportunity to enter the market in a sought-after family-friendly neighbourhood.

Disclaimer: All information contained herein is gathered from sources we consider to be reliable. However, we cannot guarantee or give any warranty about the information provided, and interested parties must solely rely on their own enquiries.

More About this Property

Property ID	1XCWFBS
Property Type	House
House Size	113 m2
Land Area	600 m2
Including	Ensuite Built-in-Robes Split system

Darren Saxon 0418 341 722

Sales Agent / Licensed Estate Agent | darren.saxon@ljhcasey.com.au

Darren Saxon 0418 341 722

Sales Agent / Licensed Estate Agent | darren.saxon@ljhcasey.com.au

LJ Hooker Cranbourne (03) 5996 4777

119 High Street, CRANBOURNE VIC 3977

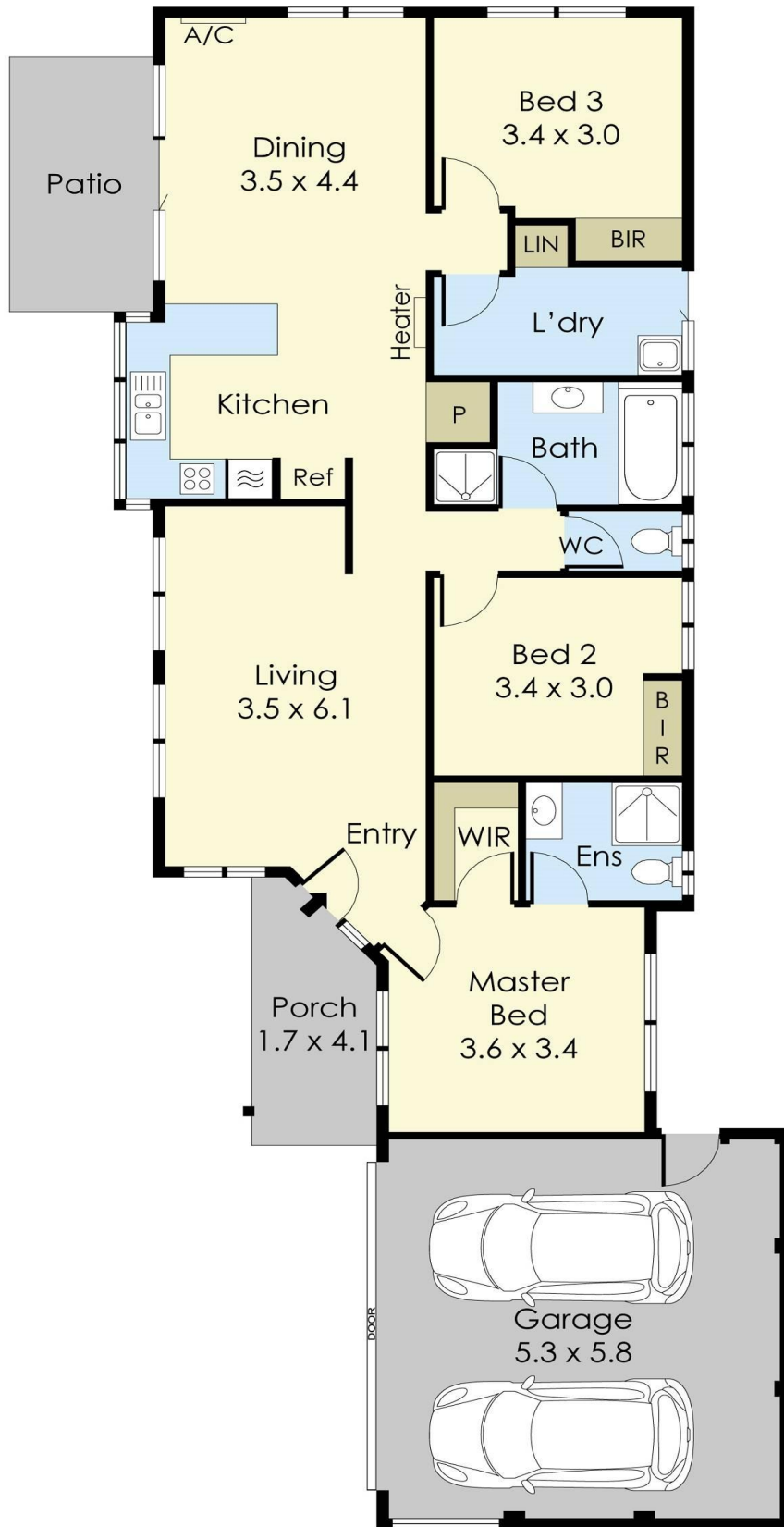
cranbourne.ljhooker.com.au | john.deo@ljhcasey.com.au



Disclaimer: All information contained therein is gathered from relevant third parties sources. We cannot guarantee or give any warranty about the information provided. Interested parties must rely solely on their own enquiries.



LJ Hooker Cranbourne
(03) 5996 4777



8 Cumquat Court, Cranbourne North

This floorplan is for illustration purposes only and no warranty is given to its accuracy. Purchasers are advised to carry out their own investigations.