

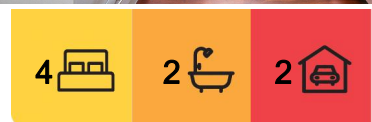


## Cranbourne North, 21 Bianca Crescent

### Park Front Modern Living with Large Outdoor Pergola!

Situated right across from beautiful parkland with playground for the kids, this is the perfect place to call home... Conveniently located within close proximity to both The Avenue Village and Eve Central Shopping Centres, Tulliallan Primary School, Alkira Secondary College, Cranbourne United Soccer Club, Early Learning Centres, Bus stops and so much more!

From the moment you walk in you will feel at home with the open plan living consisting of a great sized living and meals area amongst the hostess kitchen with 900mm oven, rangehood, dishwasher, tiled splash back, pantry and breakfast bar. Comprising of four bedrooms or three bedrooms plus a formal living/ theatre room plus the added benefit of a multipurpose/ fifth bedroom or study, the master bedroom with full ensuite and walk in robe. Other bedrooms with built in robes and central to the main bathroom, separate toilet and laundry with bench top and plenty cupboard space.



**For Sale**  
\$690,000 - \$730,000

**View**  
Sat 21st Jun @ 10:40AM - 11:00AM

**Contact**  
**Aren Aliu**  
0403 613 988  
aren.aliu@ljhcasey.com.au



**Disclaimer:** All information contained therein is gathered from relevant third parties sources. We cannot guarantee or give any warranty about the information provided. Interested parties must rely solely on their own enquiries.

**LJ Hooker Hampton Park**  
**(03) 9702 8388**



Bifold doors through the family area take you out to the huge wrap around pergola over exposed aggregate concrete offering the ideal space for outdoor entertaining amongst the beautifully manicured backyard and grassed area with plenty of room for the kids to run around in. Other comforts include ducted heating, split system, ceiling fans and a double garage.

This is one to put on top of your list... Get in quick and enjoy the benefits of fantastic living, entertaining and premium location!

Disclaimer: All information contained herein is gathered from sources we consider to be reliable. However, we cannot guarantee or give any warranty about the information provided, and interested parties must solely rely on their own enquiries.

## More About this Property

<b>Property ID</b>	47XKAFHE
<b>Property Type</b>	House
<b>Land Area</b>	400 m2
<b>Including</b>	Ducted Heating Close to Schools Close to Shops Close to Transport Split system

**Aren Aliu 0403 613 988**

Sales Manager / Auctioneer / Licensed Estate Agent | [aren.aliu@ljhcasey.com.au](mailto:aren.aliu@ljhcasey.com.au)

**LJ Hooker Hampton Park (03) 9702 8388**

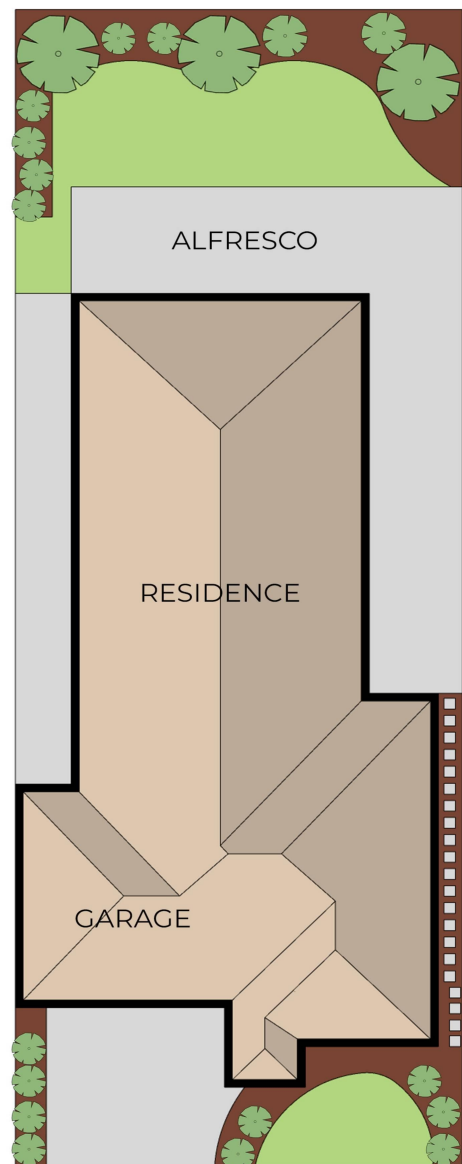
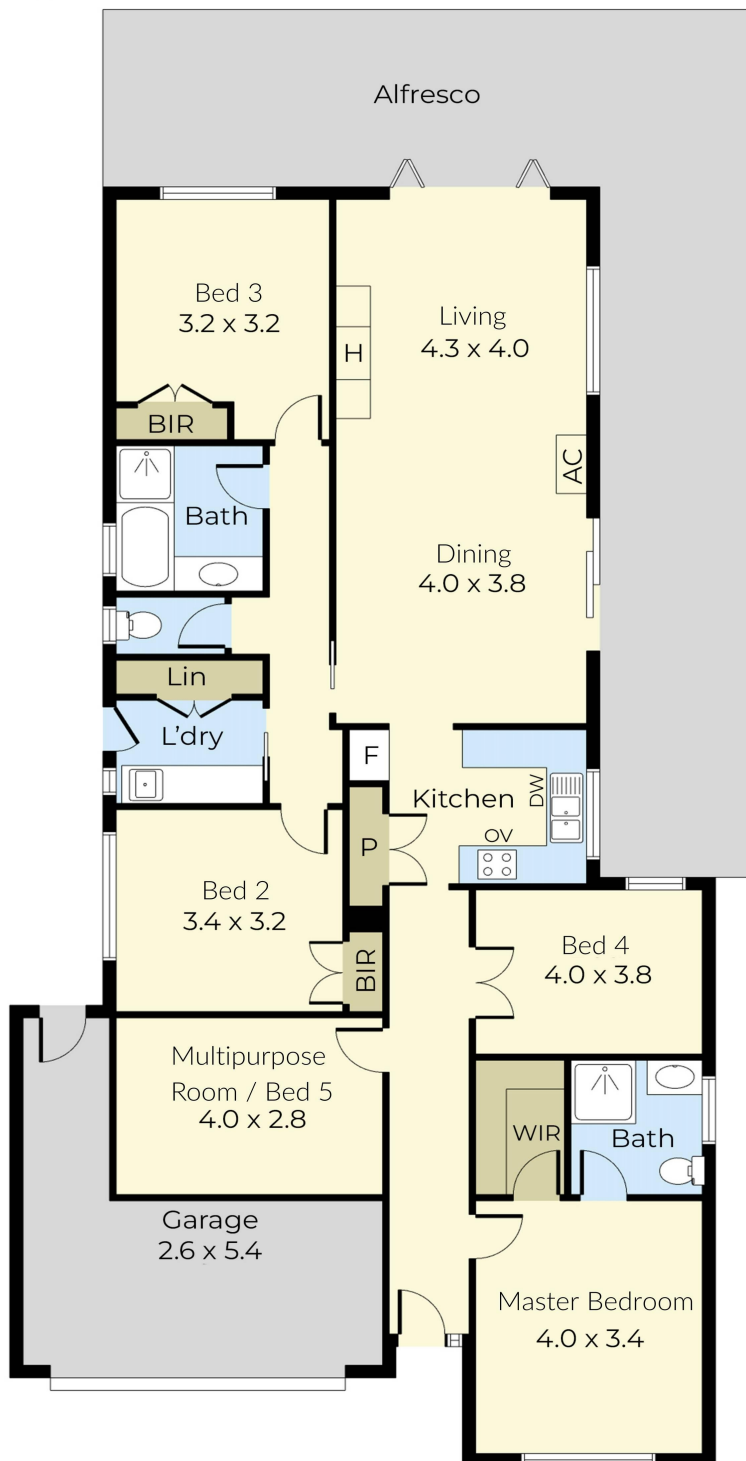
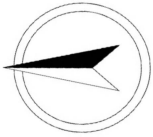
Shop 20, Hampton Park Shopping Centre, 166 Somerville Road, HAMPTON PARK VIC 3976

[hamptonpark.ljhooker.com.au](mailto:hamptonpark.ljhooker.com.au) | [john.deo@ljhcasey.com.au](mailto:john.deo@ljhcasey.com.au)



**Disclaimer:** All information contained therein is gathered from relevant third parties sources. We cannot guarantee or give any warranty about the information provided. Interested parties must rely solely on their own enquiries.

**LJ Hooker Hampton Park  
(03) 9702 8388**



## 21 Bianca Crescent, Cranbourne

© Produced by Logic Media

This floorplan is for illustration purposes only and no warranty is given to its accuracy.  
Purchases are advised to carry out their own investigations.



**LJ Hooker Hampton Park**  
**(03) 9702 8388**

**Disclaimer:** All information contained therein is gathered from relevant third parties sources.  
We cannot guarantee or give any warranty about the information provided. Interested parties must rely solely on their own enquiries.