

Cranbourne East, 8 Jolly Street

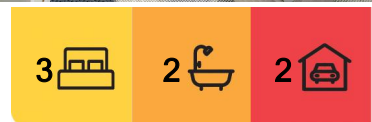
Charming Home in Prime Location

Nestled in the heart of Cranbourne East, this stunning home offers a harmonious blend of contemporary design and urban convenience. Designed for the discerning homeowner seeking both low maintenance and functionality, this residence presents an unparalleled opportunity for modern urban living.

Situated on a corner block, offering of 2 spacious levels with open plan living, perfect for first home buyers, families or investors. 3 generous size bedrooms master with full ensuite.

This is one not to be missed! Contact us today for further information.

DISCLAIMER: All stated dimensions are approximate only. Particulars given are for general information only and do not constitute any representation on the part of the vendor or agent.



For Sale
\$550,000

View
ljhooker.com.au/QMNHUWU

Contact
Zoe Crooks
0426 796 001
zoe.crooks@ljhmelton.com.au



LJ Hooker Melton
(03) 8797 5588

Disclaimer: All information contained therein is gathered from relevant third parties sources. We cannot guarantee or give any warranty about the information provided. Interested parties must rely solely on their own enquiries.

Please see the below link for an up-to-date copy of the Due Diligence Check List:

<http://www.consumer.vic.gov.au/duediligencechecklist>

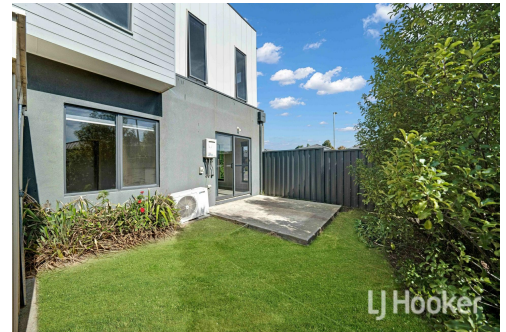
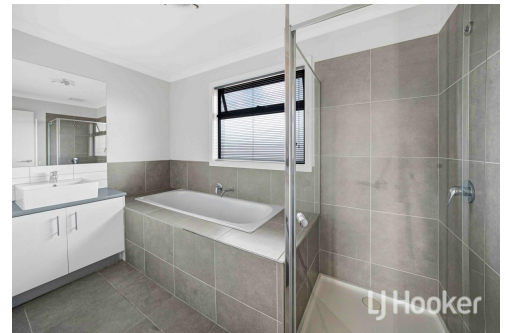
Disclosure- An underlying issue and material fact in property.

More About this Property

Property ID	QMNHWU
Property Type	Townhouse

Zoe Crooks 0426 796 001
Sales Director | zoe.crooks@ljhmelton.com.au

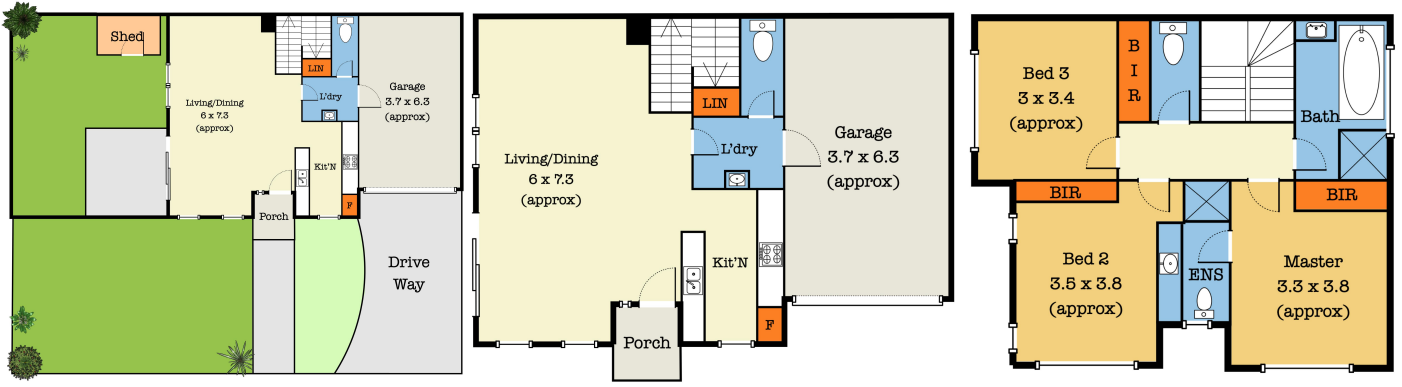
LJ Hooker Melton (03) 8797 5588
307 High Street, MELTON VIC 3337
melton.ljhooker.com.au | admin@ljhmelton.com.au



LJ Hooker Melton
(03) 8797 5588

Disclaimer: All information contained therein is gathered from relevant third parties sources. We cannot guarantee or give any warranty about the information provided. Interested parties must rely solely on their own enquiries.

Floor Plan



8 Jolly Street, Cranbourne East, VIC 3977

Ground Floor

First Floor