

Cranbourne East, Lot 453 Dream Avenue

Location Location

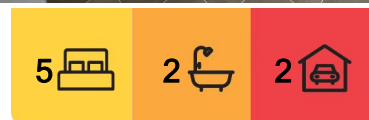
Located is walking distance to St Peters College, St Thomas The Apostle Primary School, P12 Wilandra school, child care, Safeway and Coles, a short drive to Eden Rise shopping complex as well as Cranbourne shopping centre, sporting gyms and public transport is this family home with all the extra's.

The features in this brand new home are endless and include the following:

- 5 bedrooms, the master with full a en-suite and walk in robe
- large formal lounge room, separate family and meals room
- hostess kitchen with 900mm free standing upright S/S cooker and dishwasher
- Caesar Stone Bench top to Kitchen.
- Fully tiled shower bases
- Ducted Heating
- Landscaping to front and rear yards and fencing
- Remote double garage with internal access



Disclaimer: All information contained therein is gathered from relevant third parties sources. We cannot guarantee or give any warranty about the information provided. Interested parties must rely solely on their own enquiries.



For Sale
\$950,000 - \$1,020,000

View
By Appointment

Contact
Rajbir Dhillon
0450 071 326
rajbir.dhillon@ljhcasey.com.au

John Deo
0411 873 123
john.deo@ljhcasey.com.au

LJ Hooker Hampton Park
(03) 9702 8388

- Alfresco
- NO progress payments, Turn Key House and Land Packages
- Huge Stamp Duty Savings

*Photos and plans for illustration purposes only

Disclaimer: All information contained herein is gathered from sources we consider to be reliable. However, we cannot guarantee or give any warranty about the information provided, and interested parties must solely rely on their own enquiries.

More About this Property

Property ID	47WA2FHE
Property Type	House
House Size	40 m ²
Land Area	375 m ²
Including	Ensuite Study Ducted Heating Dishwasher Floorboards Built-in-Robes Alfresco Carpeted Close to Schools Close to Shops Close to Transport

Rajbir Dhillon 0450 071 326

Sales Agent | rajbir.dhillon@ljhcasey.com.au

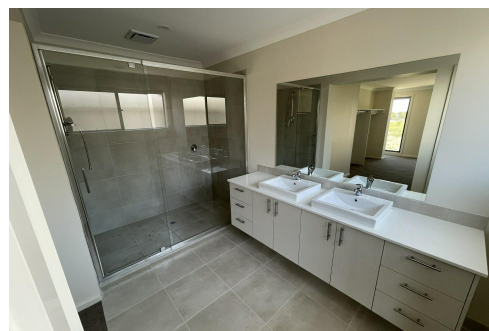
John Deo 0411 873 123

Director - Officer In Effective Control | john.deo@ljhcasey.com.au

LJ Hooker Hampton Park (03) 9702 8388

Shop 20, Hampton Park Shopping Centre, 166 Somerville Road, HAMPTON PARK VIC 3976

hamptonpark.ljhooker.com.au | john.deo@ljhcasey.com.au



Disclaimer: All information contained therein is gathered from relevant third parties sources. We cannot guarantee or give any warranty about the information provided. Interested parties must rely solely on their own enquiries.

**LJ Hooker Hampton Park
(03) 9702 8388**



...

