


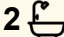

27 Dan Morgan Drive, Cranbourne East

Convenient and Carefree Living!

This beautifully presented east-facing home sits on a generous 595 sqm block in a highly sought-after location, offering the perfect blend of comfort, convenience, and low-maintenance living. Positioned close to a well-maintained park and surrounded by the fantastic amenities of Cascades on Clyde and Selandra Rise, you'll enjoy easy access to wetlands, playgrounds, supermarkets, and cafés.

Property Features:

- Four spacious bedrooms, including a master suite with full ensuite and walk-in robe
- Three additional bedrooms with walk-in robes, plus a versatile fifth bedroom that can be used as kids retreat or home office
- Modern kitchen equipped with gas cooktop, dishwasher, stainless steel appliances, and ample storage
- Open-plan living and dining area seamlessly connecting to the outdoor space

5  2  2 

FOR SALE

\$899,000 - \$939,000

VIEW

Sat 16th May @ 12:00PM - 12:20PM

AGENTS

Najeeb Olomi
0425 761 116
najeeb.olomi@ljhcasey.com.au

Rajbir Dhillon
0450 071 326
rajbir.dhillon@ljhcasey.com.au

AGENCY

LJ Hooker Hampton Park
(03) 9702 8388

All information contained therein is gathered from relevant third parties sources. We cannot guarantee or give any warranty about the information provided. Interested parties must rely solely on their own enquiries.

 **LJ Hooker**

- Separate Rumpus room that can be used as a theatre room
- Large decked outdoor entertaining area
- Expansive backyard ideal for kids and pets, with side access suitable for a boat or caravan

Additional Highlights:

- Remote-controlled double garage with internal access
- Ducted heating and evaporative cooling for year-round comfort
- Low-maintenance front and rear gardens
- 20 panels solar system

Perfectly positioned, this home is within close proximity to Selandra Rise and Hunt Club shopping centres, Bunnings Clyde, ALDI, Casey Fields sporting complex, a range of quality schools (both public and private), kindergartens, and abundant parklands. Public transport is easily accessible with the 798-bus service nearby, along with convenient access to the M1 and M3 freeways.

This is an exceptional opportunity to secure a spacious family home in a thriving and well-connected community.

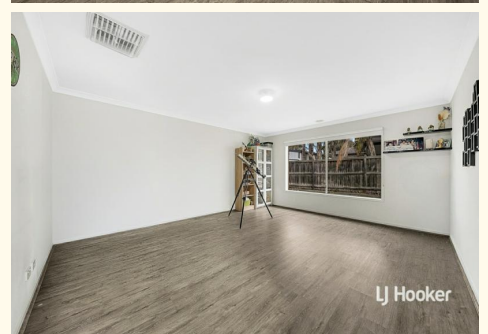
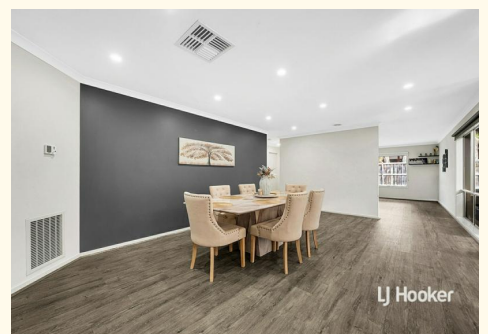
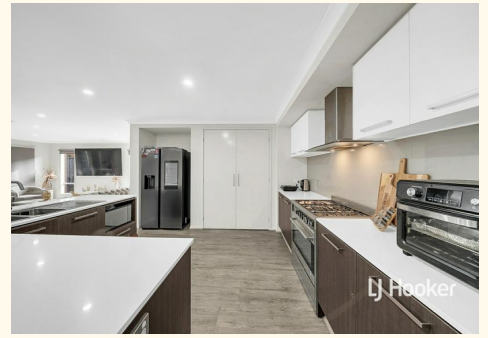
Disclaimer: All information contained herein is gathered from sources we consider to be reliable. However, we cannot guarantee or give any warranty about the information provided, and interested parties must solely rely on their own enquiries.

MORE DETAILS

Property ID	47YWHFHE
Property Type	House
Including	Air Conditioning Ducted Cooling Ducted Heating Evaporative Cooling Dishwasher Floorboards Built-in-Robes Solar Panels Solar Hot Water Alfresco Close to Schools Close to Shops Close to Transport

Najeeb Olomi 0425 761 116
Sales Agent | najeeb.olomi@ljhcasey.com.au
Rajbir Dhillon 0450 071 326
Sales Agent | rajbir.dhillon@ljhcasey.com.au

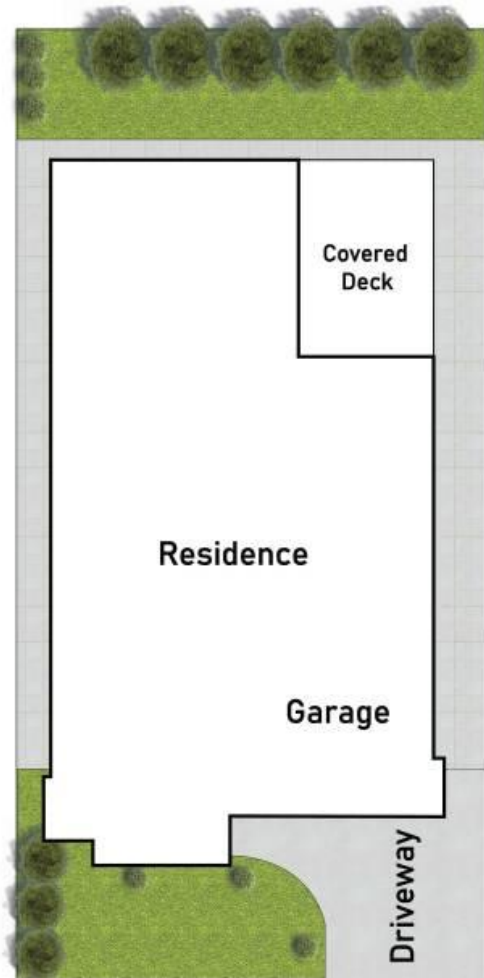
LJ Hooker Hampton Park (03) 9702 8388
Shop 20, Hampton Park Shopping Centre, 166 Somerville Road,
HAMPTON PARK VIC 3976
hamptonpark.ljhooker.com.au | john.deo@ljhcasey.com.au



Floor Plan



Site Plan



LJ Hooker

27 Dan Morgan Drive, Cranbourne East

The floor and site plan are provided for illustrative purposes only and are not to scale. While every effort has been made to ensure accuracy, neither the vendor, agency, supplier, nor PSM100Studios.au makes any warranty, guarantee, or representation regarding the accuracy, reliability, or completeness of the information contained herein. No responsibility or liability will be accepted for any errors, omissions, or discrepancies. Interested parties are strongly advised to conduct their own independent investigations and enquiries prior to making any decisions.