



Craigmore, 5 Karrawirra Close

Prime Corner Allotment!

Auction Location: 5 Karrawirra Close, Craigmore SA 5114

A blank canvas of 680sqm (approx.) with scope and opportunity to either fully renovate and bring a great home back to life with some elbow grease, or alternatively start new and build a large family home on a great size block.

For the astute developer, a corner block with potential to redevelop! (STPSAC).

Features to love:

- *Open plan living
- * Side access and ample parking for cars, trailers, boats and more
- * Torrens title allotment and easement free
- * 25m approx. frontage
- * Corner allotment with potential to subdivide and build new homes



Disclaimer: All information contained therein is gathered from relevant third parties sources. We cannot guarantee or give any warranty about the information provided. Interested parties must rely solely on their own enquiries.



For Sale
\$450,000

View
ljhooker.com.au/2BGBGJU

Contact
Donna Staines
0456 844 103
donnas@ljhsales.com.au

LJ Hooker Greenwith | Golden Grove
| Mawson Lakes | Modbury
(08) 8289 6660

A highly sought-after location that is bustling with current development, near to schooling, Craigmore Shopping Centre, public transport and local parks!

All information provided has been obtained from sources we believe to be accurate, however, we cannot guarantee the information is accurate and we accept no liability for any errors or omissions (including but not limited to a property's land size, floor plans and size, building age and condition). Interested parties should make their own enquiries and obtain their own legal and financial advice. Should this property be scheduled for auction, the Vendor's Statement may be inspected at either of our two LJ Hooker Property Specialists Real Estate offices for 3 consecutive business days immediately preceding the auction and at the auction for 30 minutes before it starts.

RLA 208516

More About this Property

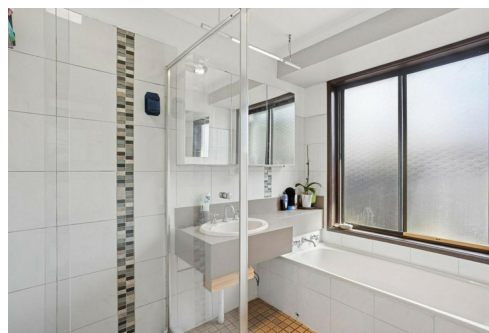
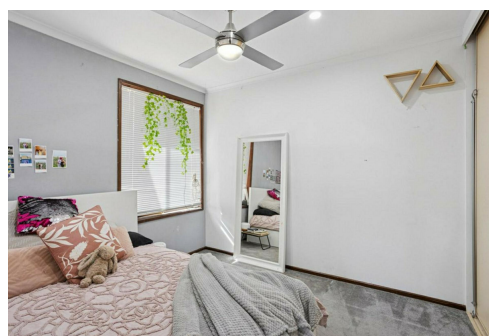
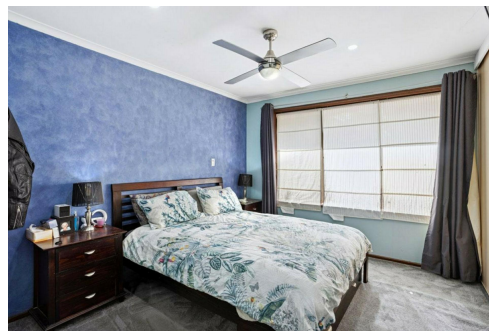
Property ID	2BGBGJU
Property Type	House
House Size	117 m2
Land Area	680 m2
Including	Workshop Secure Parking

Donna Staines 0456 844 103

Sales Specialist | donnas@ljhsales.com.au

LJ Hooker Greenwith | Golden Grove | Mawson Lakes | Modbury (08) 8289 6660

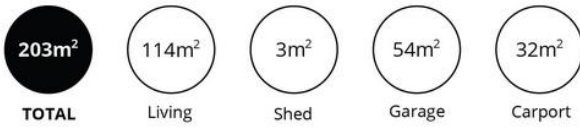
North East, Shop 2, 1007 North East Road, RIDGEHAVEN SA 5097
greenwithgoldengrove.ljhooker.com.au | info@ljhsupport.com.au



Disclaimer: All information contained therein is gathered from relevant third parties sources.

We cannot guarantee or give any warranty about the information provided. Interested parties must rely solely on their own enquiries.

**LJ Hooker Greenwith | Golden Grove
| Mawson Lakes | Modbury
(08) 8289 6660**



Scale in metres. This drawing is for illustration purposes only. All measurements are approximate and details intended to be relied upon should be independently verified.

Produced by The Fotobase Group