

## Craigmore, 15 Protea Court

### Spacious Family Haven Nestled in a Private Court

Proudly presented by Andrew Rose of LJ Hooker, this charming family home is beautifully positioned in a picturesque location that backs onto stunning parklands with serene walking trails. Perfect for those who love to be close to nature, it's also conveniently located just a short stroll from local schools and public transport, making this home a must-see for families and commuters alike.

Set on a generous 610 sqm allotment (approx.), with a wide 20-metre frontage (approx.), this home is tucked away in a peaceful court location, offering both privacy and space. Step inside to discover three well-sized bedrooms, including a master suite with a walk-in robe for added convenience. The heart of the home features a spacious kitchen with a sleek stainless-steel gas cooker and rangehood, perfect for the home chef.

Enjoy entertaining or relaxing in the expansive lounge and dining areas, or the large meals and family area, providing plenty of room for every occasion. Outside, a delightful



**For Sale**  
UNDER CONTRACT BY ANDREW ROSE

**View**  
[ljhooker.com.au/66BWFDC](http://ljhooker.com.au/66BWFDC)

**Contact**  
**Andrew Rose**  
0421 988 597  
[andrew.rose@ljhces.com.au](mailto:andrew.rose@ljhces.com.au)



**Disclaimer:** All information contained therein is gathered from relevant third parties sources. We cannot guarantee or give any warranty about the information provided. Interested parties must rely solely on their own enquiries.

**LJ Hooker Craigmore | Elizabeth |  
Salisbury  
(08) 8255 9555**

verandah and a tropical-inspired Bali hut create the ideal space for year-round entertaining. The big backyard is designed with low-maintenance landscaping, allowing you more time to enjoy your new home. Additionally, a secure carport with a roller door completes this wonderful package.

#### Key Features

- Large 610sqm allotment (approx.)
- Wide 20 metre Frontage (approx.)
- 3 Good Sized Bedrooms
- Well established, Low Maintenance Gardens
- Heating and Cooling
- Close to Smith Creek walking trail
- Quiet Court Location

#### Specifications:

CT / 5328/853

Council / Playford

Built / 1987

Land / 610m2 (approx)

Frontage / 20m (approx.)

Easements / subject to Service Easements over the land marked A for Draining purposes to the council for area A

Estimated rental assessment / TBA

This home enjoys a prime location in Craigmore, nestled next to a scenic walking trail and conveniently close to several local schools. Munno Para Shopping Centre is just a short drive away, adding to the appeal for young families or investors looking for a savvy addition to their portfolio.

Don't miss out-this home offers a lifestyle opportunity that's hard to beat!

#### Disclaimer:

We have in preparing this document used our best endeavours to ensure the information contained is true and accurate, but accept no responsibility and disclaim all liability in respect to any errors, omissions, inaccuracies or misstatements contained. Prospective purchasers should make their own enquiries to verify the information contained in this document.

RLA155355



**LJ Hooker Craigmore | Elizabeth |  
Salisbury  
(08) 8255 9555**

**Disclaimer:** All information contained therein is gathered from relevant third parties sources. We cannot guarantee or give any warranty about the information provided. Interested parties must rely solely on their own enquiries.

## More About this Property

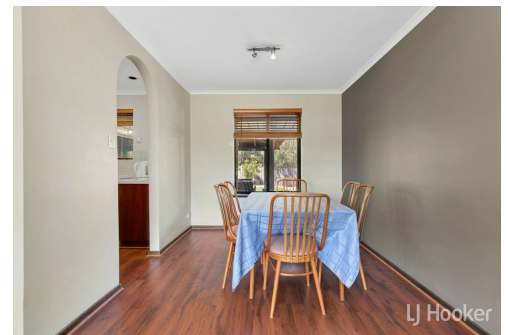
Property ID	66BWFDC
Property Type	House
House Size	143 m <sup>2</sup>
Land Area	610 m <sup>2</sup>
Including	Alarm

**Andrew Rose 0421 988 597**

Senior Sales Representative | [andrew.rose@ljhces.com.au](mailto:andrew.rose@ljhces.com.au)

**LJ Hooker Craigmore | Elizabeth | Salisbury (08) 8255 9555**

Shop 17, Craigmore Village, Yorktown Road, CRAIGMORE SA 5114  
[craigmoreelizabeth.ljhooker.com.au](http://craigmoreelizabeth.ljhooker.com.au) | [Office@ljhces.com.au](mailto:Office@ljhces.com.au)



**Disclaimer:** All information contained therein is gathered from relevant third parties sources.

We cannot guarantee or give any warranty about the information provided. Interested parties must rely solely on their own enquiries.

**LJ Hooker Craigmore | Elizabeth |  
Salisbury  
(08) 8255 9555**



## 15 Protea Court, Craigmores

DISCLAIMER: Floorplan and area calculation are approximate and for illustration purposes only.

Produced by **Property Portraits**

Interior	134m <sup>2</sup>
Carport	23m <sup>2</sup>
Exterior	49m <sup>2</sup>
Shed	06m <sup>2</sup>

**212m<sup>2</sup>**  
TOTAL