



Cottage Point, 50 Cowan Drive

An exquisite design in a magical, deep-water setting.

Just 45 minutes from the city, this exquisite home exerts a tidal pull to another time and place entirely; claiming a deep-waterfront position on Cowan Creek and magnificent views across the vast territory of Ku-ring-gai Chase National Park, it's at one with the ancient forms of the surrounding landscape. Beautifully renovated, it's the pure simplicity of an innovative design sitting lightly on the landscape that captures the imagination. Northern light spills throughout the interiors with galleries of glass framing the phenomenal backdrop; a fluid, open layout creates a sense of unity and flow between indoors and out.

There's clearly a creative eye at work here - the sleek designer kitchen is backed by floor-to-ceiling cabinetry finished in Tasmania Oak, along with a suite of premium-quality, European appliances. Bathrooms are equally impressive, as are each of the bedrooms which all open to terraces; the master retreat claims the entire lower level and includes a second living area and a private waterfront terrace.



For Sale
Contact Agent

View
ljhooker.com.au/W2YF58

Contact
Jonothan Gosselin
0488 011 870
jono.gosselin@ljhooker.com.au
Angus Abrahams
0488 007 236
angus.abrahams@ljhavalon.com.au



Disclaimer: All information contained therein is gathered from relevant third parties sources. We cannot guarantee or give any warranty about the information provided. Interested parties must rely solely on their own enquiries.

LJ Hooker Avalon Beach
(02) 9973 2999

The design almost feels cantilevered over the waterfront with its uninterrupted views; the privacy of this spot is astonishing and there's absolutely nothing that can break the spell. Down at the water's edge is a finished boathouse that's perfect for weekend guests plus a deepwater jetty with pontoon, boat ramp and a stunning rock shelf for those long lazy days spent soaking up the sun.

- Recently renovated; deep waterfront with jetty with pontoon, boathouse and boat ramp
- North vistas span miles up the waterfront across National Parkland
- Skylit + open plan with soaring ceilings framed by galleries of glass
- Sliding stacker doors connect to the vast wraparound terrace
- Streamlined kitchen finished with custom joinery, Neff appliances
- Boathouse is fully self-contained and perfect for weekend guests
- Master retreat on lower level includes 2nd living zone, lavish ensuite
- Wood burning fireplace, air con, Tasmanian Oak floors, 12kw solar panels, 3 x 10,000 litre rain water tanks.
- Double carport plus off street parking for an additional 3 cars
- 45 minutes from the city; short stroll to Cottage Point Inn + Cottage Point Kiosk

More About this Property

Property ID	W2YF58
Property Type	House
Land Area	1100 m ²

Jonothan Gosselin 0488 011 870

Licensed Real Estate Agent | jono.gosselin@ljhooker.com.au

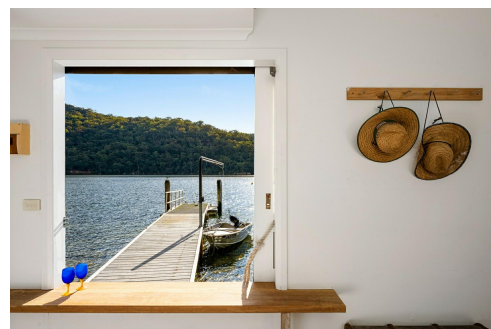
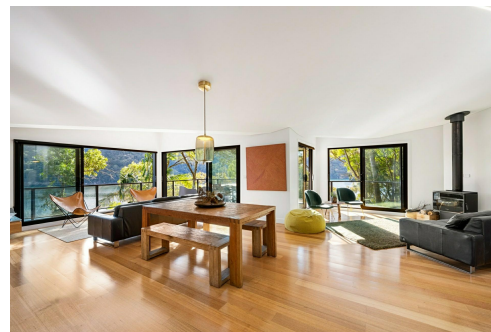
Angus Abrahams 0488 007 236

Licensed Real Estate Agent | angus.abrahams@ljhavalon.com.au

LJ Hooker Avalon Beach (02) 9973 2999

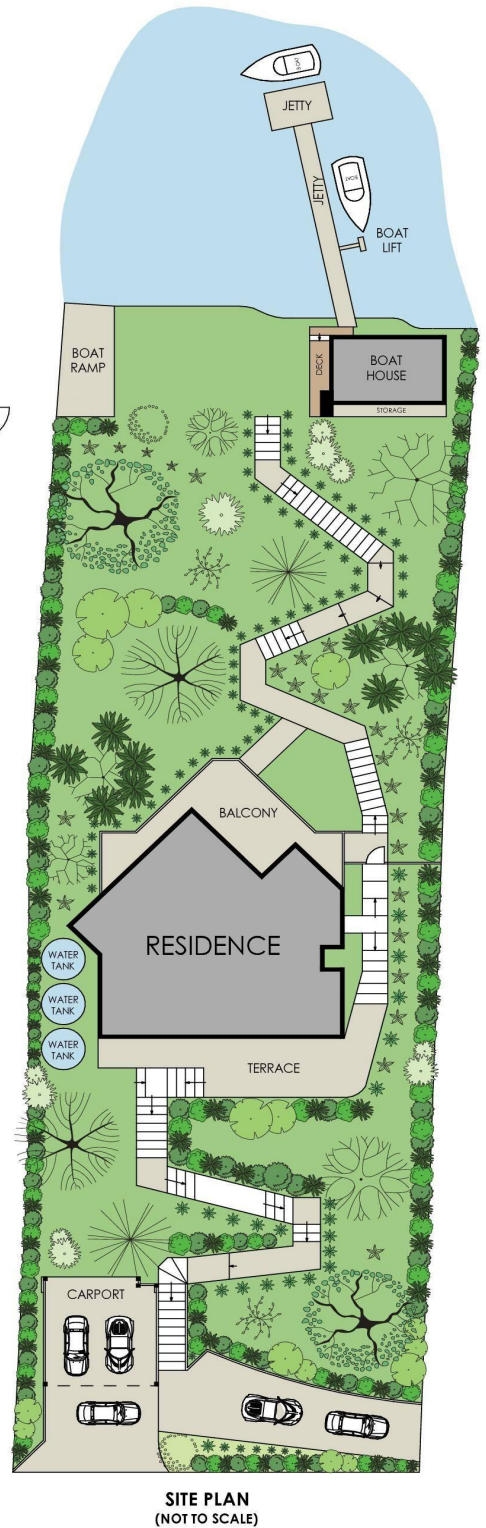
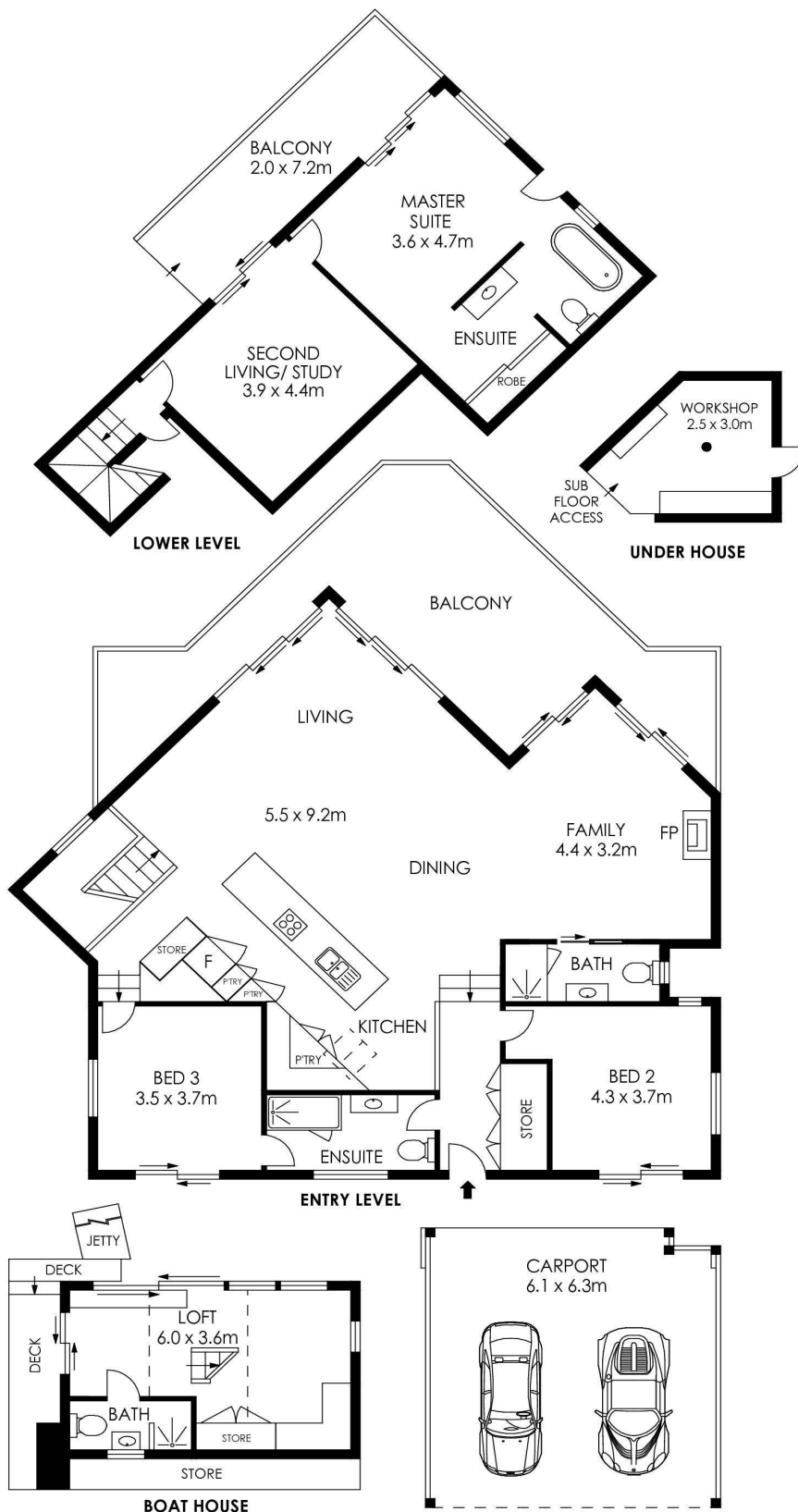
64 Old Barrenjoey Road, AVALON BEACH NSW 2107

avalonbeach.ljhooker.com.au | avalonbeach@ljhooker.com.au



LJ Hooker Avalon Beach
(02) 9973 2999

Disclaimer: All information contained therein is gathered from relevant third parties sources. We cannot guarantee or give any warranty about the information provided. Interested parties must rely solely on their own enquiries.



APPROX. INTERNAL AREA = 196 m²
 APPROX. EXTERNAL AREA = 52 m²
 TOTAL = 248 m²
 LAND SIZE = 1100 m²

PLANS SHOWN ONLY INDICATIVE OF LAYOUT. DIMENSIONS ARE APPROXIMATE.



50 Cowan Drive, Cottage Point

LJ Hooker

LJ Hooker

LJ Hooker Avalon Beach
 (02) 9973 2999

Disclaimer: All information contained therein is gathered from relevant third parties sources. We cannot guarantee or give any warranty about the information provided. Interested parties must rely solely on their own enquiries.