



## Cornwall, 10 Edward Street

### Charm-filled Miner's Cottage

With only glimpses of the neighbours through the trees, this solid miner's cottage offers a life of glorious views and tranquil surroundings, just five minutes from St Marys. Wake to the sounds of nothing but the local wildlife and the sweet smell of the cleanest air in the world.

With its double block surrounded by Crown Land, your privacy is assured as you enjoy this cosy cottage with nature at your doorstep. The new wood heater keeps the entire home cosy during the colder months with the assistance of under-floor and ceiling insulation. The cute country kitchen has everything you need, including a servery window into the lounge area to ensure you don't miss any of the action.

Outside you'll find a second toilet, a studio/workshop and a further shed, which was once the laundry. The front veranda is just begging for you to sit and relax while taking in the view of the Fingal Valley hills and the prolific bulbs in the front lawn and beyond the fence line.

Steeped in history and recognised as a haven for people seeking an alternate lifestyle, St

3

1

4

**For Sale**  
Please Call

**View**  
[ljhooker.com.au/PETFN1](http://ljhooker.com.au/PETFN1)

**Contact**  
**David Liebmann**  
0428 860 047  
[dliebmann.sthelens@ljhooker.com.au](mailto:dliebmann.sthelens@ljhooker.com.au)



**Disclaimer:** All information contained therein is gathered from relevant third parties sources. We cannot guarantee or give any warranty about the information provided. Interested parties must rely solely on their own enquiries.

**LJ Hooker St Helens**  
**(03) 6376 2300**



Marys is just fifteen minutes from spectacular East Coast beaches and thirty-five minutes to the vibrant centre of St Helens. The East Coast is a mecca for enthusiasts of mountain biking, fishing, surfing, diving, bush walking and wine and food trails. You'll be the envy of friends and family for your close proximity to Binalong Bay, the Bay of Fires, Bicheno and the breath-taking Freycinet National Park.

Zoned low density residential

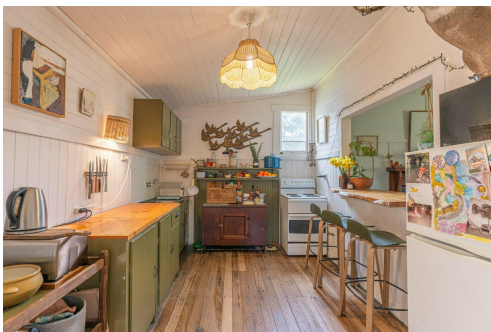
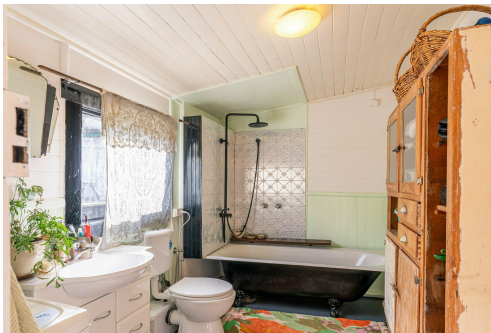
Rates \$845/year

## More About this Property

Property ID	PETFN1
Property Type	House
House Size	123 m²
Land Area	1546 m²
Including	Toilets (2) Fire Place Balcony Floorboards Workshop Fully Fenced Water Tank

**David Liebmann 0428 860 047**  
Property Consultant | [dliebmann.sthelens@ljhooker.com.au](mailto:dliebmann.sthelens@ljhooker.com.au)

**LJ Hooker St Helens (03) 6376 2300**  
36 Cecilia Street, ST HELENS TAS 7216  
[sthelens.ljhooker.com.au](mailto:sthelens.ljhooker.com.au) | [sthelens@ljhooker.com.au](mailto:sthelens@ljhooker.com.au)



**Disclaimer:** All information contained therein is gathered from relevant third parties sources. We cannot guarantee or give any warranty about the information provided. Interested parties must rely solely on their own enquiries.

**LJ Hooker St Helens**  
**(03) 6376 2300**