



30 Aster Court, Cornubia

Another one sold by Neil!

Please note, if you are coming for an inspection please bring walking shoes as parking access at open homes can be tricky

Perched high among the gum trees, this architecturally designed split-level home captures the essence of peaceful Australian bush living. Surrounded by lush native greenery and cooled by gentle afternoon breezes, it offers the rare combination of privacy, serenity, and convenience - just minutes from everything.


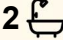
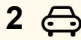
A Home Immersed in Nature

From the moment you step inside, you're greeted by soaring cathedral ceilings, polished timber floors, and a stunning north-easterly outlook that frames the treetop canopy beyond. The open-plan living, dining, and kitchen area flows effortlessly onto the full-length veranda - the perfect spot to enjoy your morning coffee while the sun rises through the trees.

Three generous bedrooms, all with built-ins, share the upper level along with the family bathroom, separate toilet, and laundry. Every room enjoys tranquil bushland views. A rear paved patio provides an inviting space for afternoon barbecues, surrounded by the sounds of native birdlife.

Versatile Lower Level

All information contained therein is gathered from relevant third parties sources. We cannot guarantee or give any warranty about the information provided. Interested parties must rely solely on their own enquiries.

4  2  2 

FOR SALE

Interest over \$980,000.

AGENTS

Neil Cowan

0432 468 439

ncowan.shailerpark@ljhooker.com.au

AGENCY

LJ Hooker Shailer Park

(07) 3102 0829

 **LJ Hooker**

Downstairs, a large rumpus area and fourth bedroom with its own bathroom offer the flexibility for guest accommodation, a teenager's retreat, home office, or independent living. Wrap-around decks on both levels make entertaining easy while capturing cool breezes and leafy vistas from every angle.

Lifestyle and Location

Nestled within a quiet cul-de-sac and bordered by nature reserve, this property is a private retreat from the world. Yet, you're just a short stroll to local walking and cycling trails, parklands, and top-rated schools including Chisholm College, Shailer Park State School, and St Matthews. Major shopping centres and the M1 are only eight minutes away, with Brisbane and the Gold Coast within easy 30-minute reach.

Features:

- Architect-designed split-level home in a peaceful bushland setting
- " 4 bedrooms with built-in robes and ceiling fans
- " 2½ bathrooms including ensuite-style downstairs setup
- Open-plan kitchen, dining, and lounge with air conditioning
- Expansive decks capturing treetop views and cooling breezes
- Lower-level rumpus and bedroom - ideal for dual living or home office
- Double lock-up garage with remote doors and ceiling storage
- Surrounded by nature reserve (property not fenced)

Disclaimer: We have in preparing this disclosure used our best endeavours to ensure that the information contained herein is true and accurate. No responsibility will be accepted for any and all liability in respect of errors, omissions, Photos, inaccuracies or misstatements. Buyers are responsible to carry out their own research.

MORE DETAILS

Property ID	691HVG
Property Type	House
Land Area	2600 m2

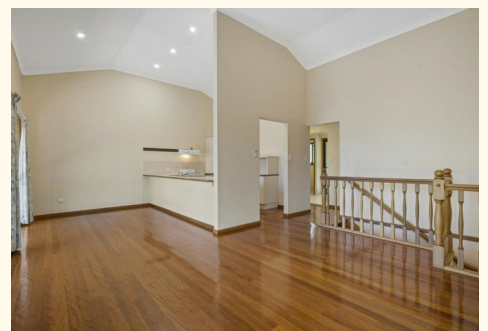
Neil Cowan 0432 468 439

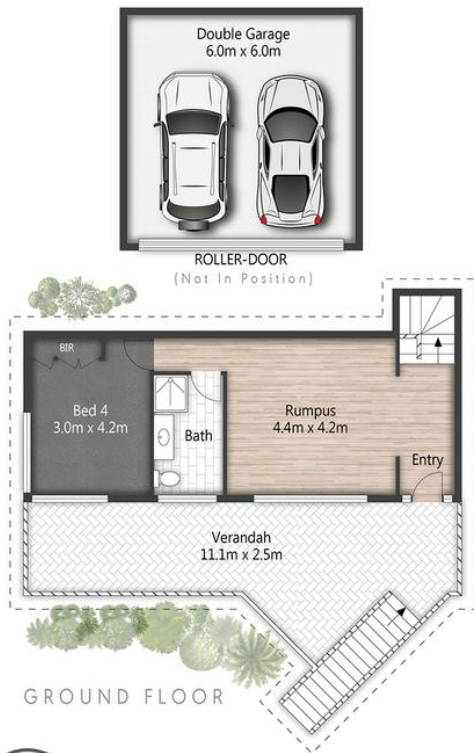
Licensee | ncowan.shailerpark@ljhooker.com.au

LJ Hooker Shailer Park (07) 3102 0829

2/3 Mandew Street, SHAILER PARK QLD 4128

shailerpark.ljhooker.com.au | shailerpark@ljhooker.com.au





30 Aster Court CORNUBIA

4 | 2 | 2 | 207m² | 2600m²

Plans are shown for marketing purposes only. All dimensions are approximate; they are subject to errors and inaccuracies and no liability will be accepted.